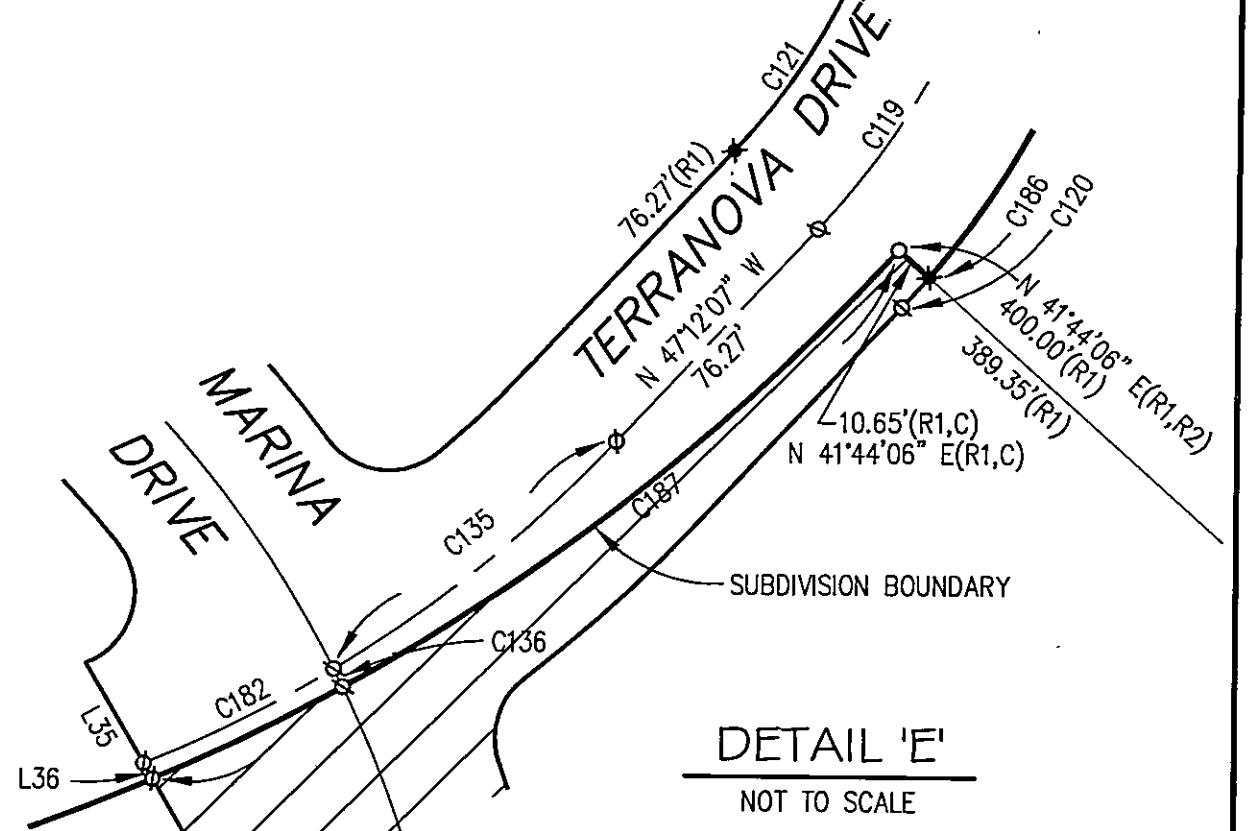


LINE	LENGTH	BEARING
L4	31.52'	S 57°46'46" W
L16	16.09'	S 19°52'00" W
L17	61.89'	S 19°52'00" W
L18	13.83'	S 19°52'00" W
L28	2.35'	S 37°29'44" E
L35	30.31'	N 59°37'20" E
L36	4.62'	N 59°37'20" E

CURVE	RADIUS	DELTA	LENGTH
C98	210.00'	110°03'39"	403.39'
C99	180.00'	110°03'39"	345.77'
C100	240.00'	110°03'39"	461.02'
C102	180.00'	54°06'46"	170.00'
C103	180.00'	24°50'27"	78.04'
C104	240.00'	14°52'57"	62.34'
C105	240.00'	19°02'20"	79.75'
C106	240.00'	19°05'55"	80.00'
C107	240.00'	19°05'55"	80.00'
C108	240.00'	19°05'55"	80.00'
C109	240.00'	18°50'36"	78.93'
C110	20.00'	80°24'22"	28.07'
C111	20.00'	87°14'41"	30.45'
C112	250.00'	22°48'57"	99.55'
C113	280.00'	10°28'00"	51.15'
C114	220.00'	22°48'57"	87.61'
C115	220.00'	1°08'28"	4.38'
C116	220.00'	21°40'29"	83.22'
C117	250.00'	2°49'29"	12.32'
C118	250.00'	19°59'35"	87.24'
C119	200.00'	25°41'12"	89.66'
C120	230.00'(C)	25°41'12"(C)	103.11'(C)

CURVE	RADIUS	DELTA	LENGTH
C121	170.00'(R1,M)	25°41'12"(R1,M)	76.21'(R1,M)
C122	320.00'(R1,M)	6°02'59"(R1,M)	33.79'(R1,M)
C123	20.00'(R1,M)	94°25'16"(R1,M)	32.96'(R1,M)
C124	20.00'	106°58'56"	37.34'
C125	350.00'	24°36'57"	150.37'
C129	300.00'	55°12'09"	289.04'
C135	350.00'	15°33'02"	94.99'
C136	300.00'	0°59'53"	5.23'
C137	300.00'	35°07'02"	183.87'
C138	330.00'(R1,M)	25°36'00"(R1,M)	147.45'(R1,M)
C139	270.00'	23°29'54"	110.73'
C140	300.00'	59°20'10"	310.68'
C141	330.00'	59°20'10"	341.75'
C142	270.00'	59°20'10"	279.61'
C143	300.00'	10°02'42"	52.60'
C144	270.00'	10°02'42"	47.34'
C145	330.00'	10°02'42"	57.86'
C172	270.00'	11°13'15"	52.88'
C173	270.00'	29°25'34"	138.67'
C174	270.00'	18°41'21"	88.07'
C175	330.00'	21°10'45"	121.98'
C176	330.00'	14°29'11"	83.44'
C177	330.00'	10°25'54"	60.08'
C178	330.00'	13°14'20"	76.25'
C182	350.00'	9°03'55"	55.38'
C186	230.00'(R1,M)	23°01'34"(R1,M)	92.43'(R1,M)
C187	560.00'(R1,R2,C)	24°35'05"(R1,R2,C)	240.29'(R1,R2,C)



- RECORD REFERENCES**
- R1 RECORD DATA PER SUBDIVISION MAP ENTITLED PHASE 4, UNIT 1 OF THE BAILEY CREEK SUBDIVISION FILED IN THE OFFICE OF THE COUNTY RECORDER OF THE COUNTY OF PLUMAS, STATE OF CALIFORNIA, BOOK 10 OF MAPS, PAGES 18-22
  - R2 RECORD DATA PER DEED RECORDED IN BOOK 566 OF OFFICIAL RECORDS AT PAGE 301

- LEGEND**
- ⊕ CALCULATED POINT, NO MONUMENT FOUND OR SET
  - SET 5/8" REBAR WITH PLASTIC CAP MARKED R.C.E. 29113, UNLESS NOTED OTHERWISE
  - ★ FOUND 5/8" REBAR & CAP MARKED R.C.E. 29113
  - R1 RECORDED BEARING OR DISTANCE
  - M MEASURED BEARING OR DISTANCE

**PHASE 4 UNIT 2  
BAILEY CREEK SUBDIVISION**

**FOR  
BAILEY CREEK INVESTORS**

A PORTION OF SECTION 13, TOWNSHIP 28 NORTH  
RANGE 7 EAST M.D.M., AND A PORTION OF SECTION 18,  
TOWNSHIP 28 NORTH RANGE 8 EAST M.D.M.

**RAR**  
**ROLLS ANDERSON & ROLLS**  
CIVIL ENGINEERS  
115 YELLOWSTONE DRIVE - CHICO, CALIFORNIA 95973-5811