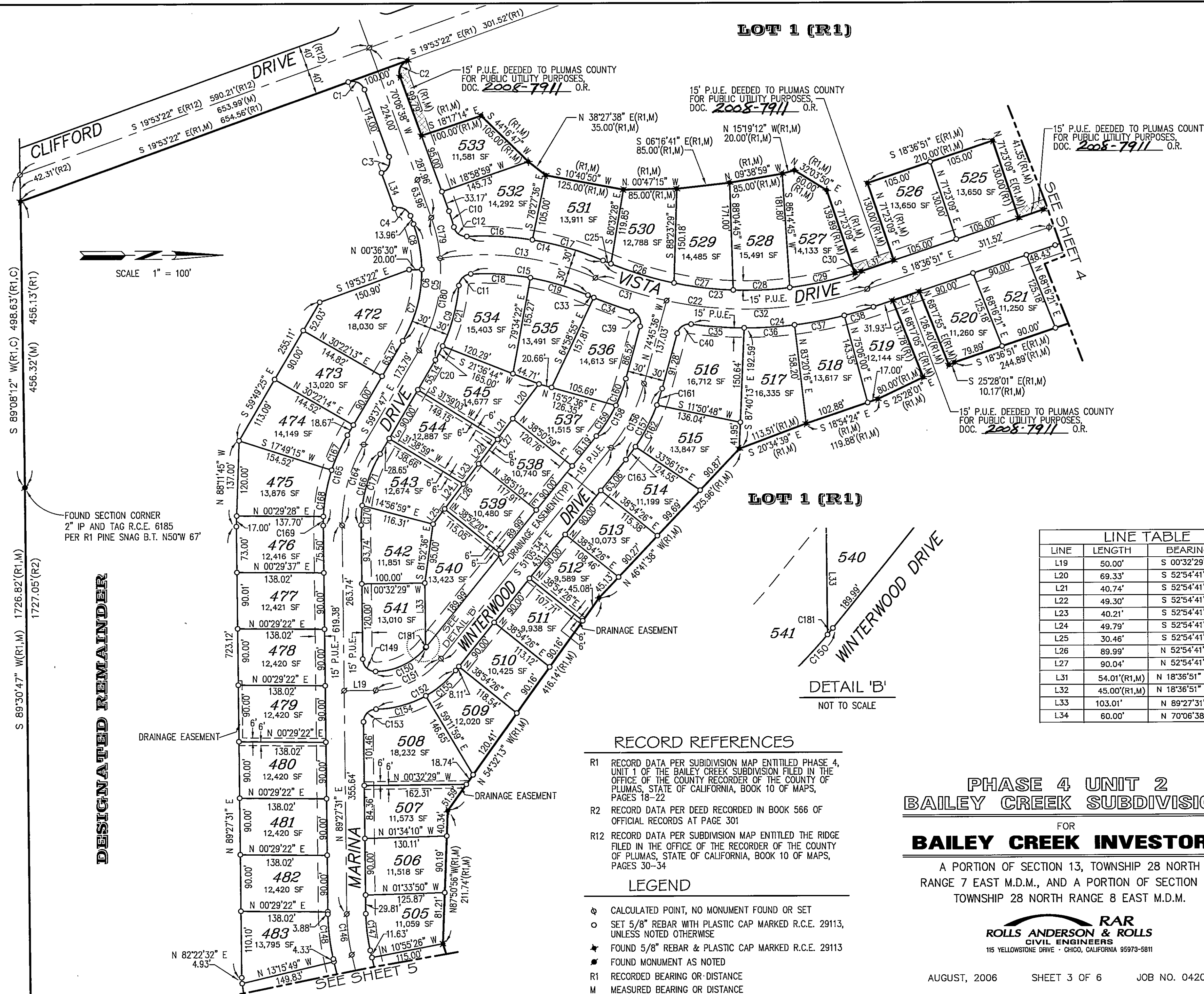


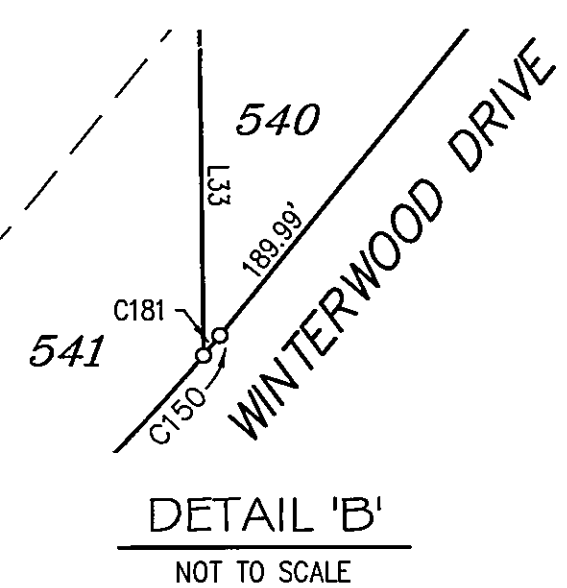
LOT 1 (R1)



CURVE TABLE			
CURVE	RADIUS	DELTA	LENGTH
C1	20.00'	90°00'00"	31.42'
C2	20.00'(R1,M)	90°00'00"(R1,M)	31.42'(R1,M)
C3	20.00'	90°00'00"	31.42'
C4	20.00'	90°00'00"	31.42'
C5	250.00'	50°15'35"	219.30'
C6	220.00'	50°15'35"	192.98'
C7	220.00'	30°58'43"	118.95'
C8	220.00'	19°16'52"	74.03'
C9	280.00'	25°37'38"	125.24'
C10	280.00'	5°26'04"	26.56'
C11	20.00'	82°25'50"	28.77'
C12	20.00'	78°47'02"	27.50'
C13	442.62'	32°38'32"	252.17'
C14	472.62'	26°53'32"	221.83'
C15	412.62'	26°28'49"	190.70'
C16	472.62'	12°43'26"	104.96'
C17	472.62'	14°10'07"	116.87'
C18	412.62'	13°16'08"	95.56'
C19	412.62'	13°12'41"	95.14'
C20	280.00'	5°05'32"	24.89'
C21	280.00'	20°32'07"	100.35'
C22	600.00'	42°16'03"	442.62'
C23	570.00'	42°16'03"	420.49'
C24	630.00'	26°42'33"	293.68'
C25	570.00'	1°21'18"	13.48'
C26	570.00'	10°34'35"	105.22'
C27	570.00'	9°34'26"	95.24'
C28	570.00'	9°03'39"	90.14'
C29	570.00'	10°35'47"	105.42'
C30	570.00'(R1,M)	01°06'18"(R1,M)	10.99'(R1,M)
C31	600.00'	11°21'37"	118.96'
C32	600.00'	30°54'26"	323.66'
C33	630.00'	0°55'21"	10.14'
C34	630.00'	5°48'09"	63.80'
C35	630.00'	7°44'02"	85.04'
C36	630.00'	7°18'02"	80.27'
C37	630.00'	7°17'53"	80.25'
C38	630.00'	4°22'37"	48.13'
C39	20.00'	88°18'41"	30.83'
C40	20.00'	82°51'19"	28.92'
C146	300.00'	12°29'54"	65.44'
C147	270.00'	12°29'54"	58.90'
C148	330.00'	12°29'54"	71.99'
C149	20.00'	90°00'00"	31.42'
C150	105.00'	49°37'57"	90.96'
C151	135.00'	50°33'04"	119.11'
C152	165.00'	50°33'04"	145.58'
C153	20.00'	90°00'00"	31.42'
C154	165.00'	28°46'21"	82.86'
C155	165.00'	21°46'44"	62.72'
C156	280.00'	23°40'02"	115.66'
C157	310.00'	23°40'02"	128.05'
C158	250.00'	23°40'02"	103.27'
C159	250.00'	13°16'44"	57.94'
C160	250.00'	10°23'18"	45.33'
C161	310.00'	5°05'38"	27.56'
C162	310.00'	13°50'48"	74.92'
C163	310.00'	4°43'36"	25.57'
C164	250.00'	30°54'42"	134.88'
C165	280.00'	30°54'42"	151.06'
C166	220.00'	30°54'42"	118.69'
C167	280.00'	12°32'58"	61.33'
C168	280.00'	15°23'36"	75.23'
C169	280.00'	2°58'08"	14.51'
C170	220.00'	8°09'49"	31.35'
C171	220.00'	22°44'53"	87.35'
C179	250.00'	15°14'47"	66.52'
C180	250.00'	35°00'49"	152.78'
C181	105.00'	0°55'08"	1.68'

LINE TABLE		
LINE	LENGTH	BEARING
L19	50.00'	S 00°32'29" E
L20	69.33'	S 52°54'41" E
L21	40.74'	S 52°54'41" E
L22	49.30'	S 52°54'41" E
L23	40.21'	S 52°54'41" E
L24	49.79'	S 52°54'41" E
L25	30.46'	S 52°54'41" E
L26	89.99'	N 52°54'41" W
L27	90.04'	N 52°54'41" W
L31	54.01'(R1,M)	N 18°36'51" W(R1,M)
L32	45.00'(R1,M)	N 18°36'51" W(R1,M)
L33	103.01'	N 89°27'31" E
L34	60.00'	N 70°06'38" E

LOT 1 (R1)



RECORD REFERENCES

- R1 RECORD DATA PER SUBDIVISION MAP ENTITLED PHASE 4, UNIT 1 OF THE BAILEY CREEK SUBDIVISION FILED IN THE OFFICE OF THE COUNTY RECORDER OF THE COUNTY OF PLUMAS, STATE OF CALIFORNIA, BOOK 10 OF MAPS, PAGES 18-22
- R2 RECORD DATA PER DEED RECORDED IN BOOK 566 OF OFFICIAL RECORDS AT PAGE 301
- R12 RECORD DATA PER SUBDIVISION MAP ENTITLED THE RIDGE FILED IN THE OFFICE OF THE RECORDER OF THE COUNTY OF PLUMAS, STATE OF CALIFORNIA, BOOK 10 OF MAPS, PAGES 30-34

LEGEND

- ◊ CALCULATED POINT, NO MONUMENT FOUND OR SET
- SET 5/8" REBAR WITH PLASTIC CAP MARKED R.C.E. 29113, UNLESS NOTED OTHERWISE
- ★ FOUND 5/8" REBAR & PLASTIC CAP MARKED R.C.E. 29113
- FOUND MONUMENT AS NOTED
- R1 RECORDED BEARING OR DISTANCE
- M MEASURED BEARING OR DISTANCE

PHASE 4 UNIT 2  
BAILEY CREEK SUBDIVISION  
FOR  
BAILEY CREEK INVESTORS

A PORTION OF SECTION 13, TOWNSHIP 28 NORTH  
RANGE 7 EAST M.D.M., AND A PORTION OF SECTION 18,  
TOWNSHIP 28 NORTH RANGE 8 EAST M.D.M.

**RAR**  
ROLLS ANDERSON & ROLLS  
CIVIL ENGINEERS  
115 YELLOWSTONE DRIVE - CHICO, CALIFORNIA 95973-5811