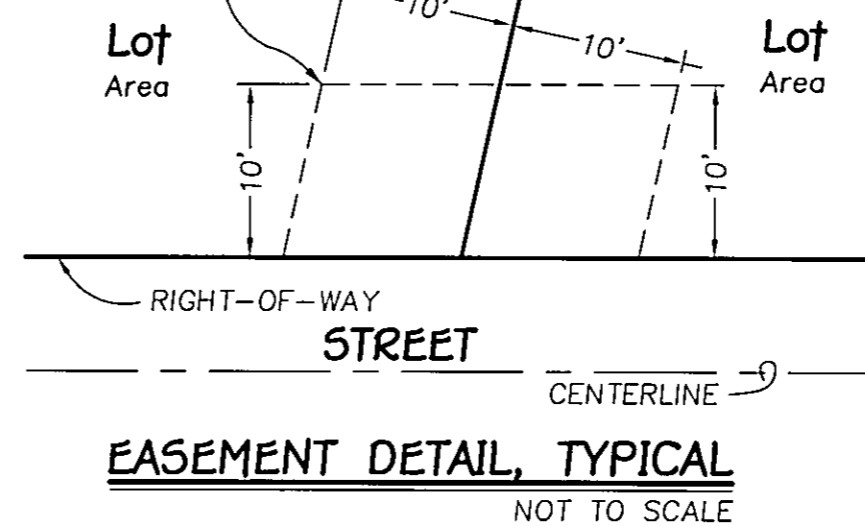


NOTES

1. REFER TO C.C. & R'S RECORDED IN THE PLUMAS COUNTY RECORDERS OFFICE JULY 27, 2001, AS DOCUMENT NO. 2001-5919.
2. THE REALIGNMENT OF HIGHWAY 89 PER DOC. NO. 2004-5405 REFERS TO THE RIGHT-OF-WAY ONLY. THE CENTERLINE AS SHOWN HEREON WAS REPRODUCED FROM CALTRANS CONSTRUCTION PLANS NO. 02-366004, DATED JUNE 28, 2004.
3. ALL MEASUREMENTS ARE RECORD AND MEASURED UNLESS OTHERWISE NOTED.

10' P.U.E. LINES OFFSET CONCENTRIC AND PARALLEL TO STREET AND LOT LINES



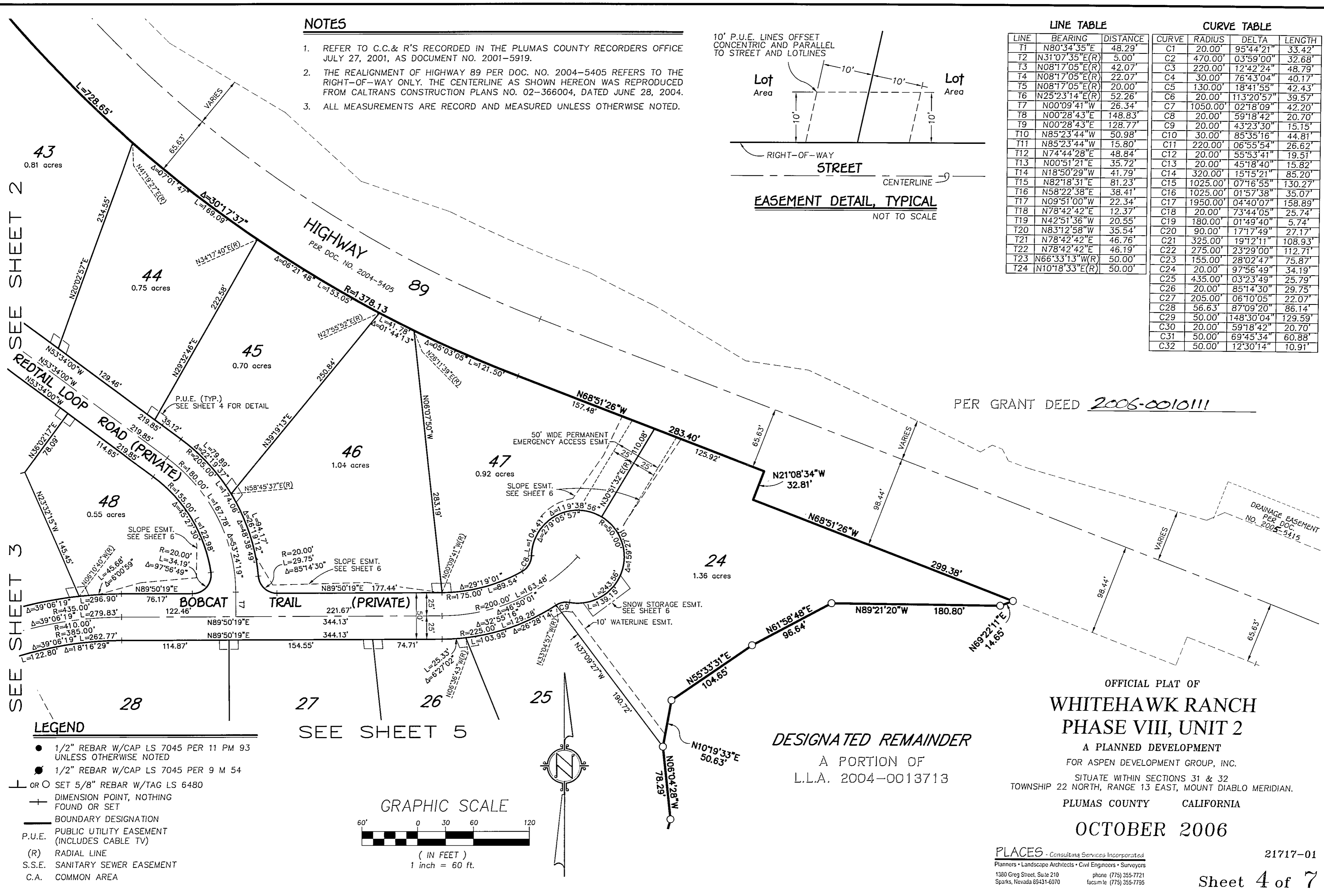
LINE TABLE

LINE	BEARING	DISTANCE
T1	N80°34'35"E	48.29'
T2	N31°07'35"E(R)	5.00'
T3	N08°17'05"E(R)	42.07'
T4	N08°17'05"E(R)	22.07'
T5	N08°17'05"E(R)	20.00'
T6	N25°23'14"E(R)	52.26'
T7	N00°09'41"W	26.34'
T8	N00°28'43"E	148.83'
T9	N00°28'43"E	128.77'
T10	N85°23'44"W	50.98'
T11	N85°23'44"W	15.80'
T12	N74°44'28"E	48.84'
T13	N00°51'21"E	35.72'
T14	N18°50'29"W	41.79'
T15	N82°18'31"E	81.23'
T16	N58°22'38"E	38.41'
T17	N09°51'00"W	22.34'
T18	N78°42'42"E	12.37'
T19	N42°51'36"W	20.55'
T20	N83°12'58"W	35.54'
T21	N78°42'42"E	46.76'
T22	N78°42'42"E	46.19'
T23	N66°33'13"W(R)	50.00'
T24	N10°18'33"E(R)	50.00'

CURVE TABLE

CURVE	RADIUS	DELTA	LENGTH
C1	20.00'	95°44'21"	33.42'
C2	470.00'	03°59'00"	32.68'
C3	220.00'	12°42'24"	48.79'
C4	30.00'	76°43'04"	40.17'
C5	130.00'	18°41'55"	42.43'
C6	20.00'	113°20'57"	39.57'
C7	1050.00'	02°18'09"	42.20'
C8	20.00'	59°18'42"	20.70'
C9	20.00'	43°23'30"	15.15'
C10	30.00'	85°35'16"	44.81'
C11	220.00'	06°55'54"	26.62'
C12	20.00'	55°53'41"	19.51'
C13	20.00'	45°18'40"	15.82'
C14	320.00'	15°15'21"	85.20'
C15	1025.00'	07°16'55"	130.27'
C16	1025.00'	01°57'38"	35.07'
C17	1950.00'	04°40'07"	158.89'
C18	20.00'	73°44'05"	25.74'
C19	180.00'	01°49'40"	5.74'
C20	90.00'	17°17'49"	27.17'
C21	325.00'	19°12'11"	108.93'
C22	275.00'	23°29'00"	112.71'
C23	155.00'	28°02'47"	75.87'
C24	20.00'	97°56'49"	34.19'
C25	435.00'	03°23'49"	25.79'
C26	20.00'	85°14'30"	29.75'
C27	205.00'	06°10'05"	22.07'
C28	56.63'	87°09'20"	86.14'
C29	50.00'	148°30'04"	129.59'
C30	20.00'	59°18'42"	20.70'
C31	50.00'	69°45'34"	60.88'
C32	50.00'	12°30'14"	10.91'

SEE SHEET 2
SEE SHEET 3

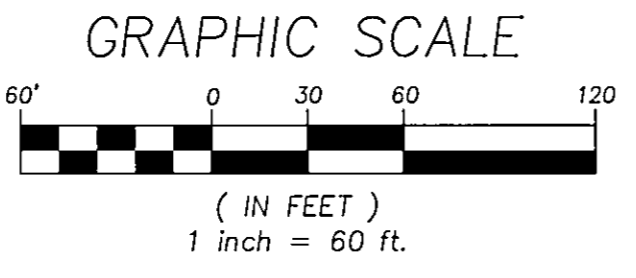


PER GRANT DEED 2006-0010111

LEGEND

- 1/2" REBAR W/CAP LS 7045 PER 11 PM 93 UNLESS OTHERWISE NOTED
- 1/2" REBAR W/CAP LS 7045 PER 9 M 54
- ⊥ OR ○ SET 5/8" REBAR W/TAG LS 6480
- + DIMENSION POINT, NOTHING FOUND OR SET
- BOUNDARY DESIGNATION
- P.U.E. PUBLIC UTILITY EASEMENT (INCLUDES CABLE TV)
- (R) RADIAL LINE
- S.S.E. SANITARY SEWER EASEMENT
- C.A. COMMON AREA

SEE SHEET 5



**OFFICIAL PLAT OF
WHITEHAWK RANCH
PHASE VIII, UNIT 2**

DESIGNATED REMAINDER
A PORTION OF
L.L.A. 2004-0013713

A PLANNED DEVELOPMENT
FOR ASPEN DEVELOPMENT GROUP, INC.
SITUATE WITHIN SECTIONS 31 & 32
TOWNSHIP 22 NORTH, RANGE 13 EAST, MOUNT DIABLO MERIDIAN.
PLUMAS COUNTY CALIFORNIA

OCTOBER 2006

PLACES - Consulting Services Incorporated
Planners • Landscape Architects • Civil Engineers • Surveyors
1380 Greg Street, Suite 210 Sparks, Nevada 89431-6070
phone (775) 355-7721
facsimile (775) 355-7755

21717-01

Sheet 4 of 7