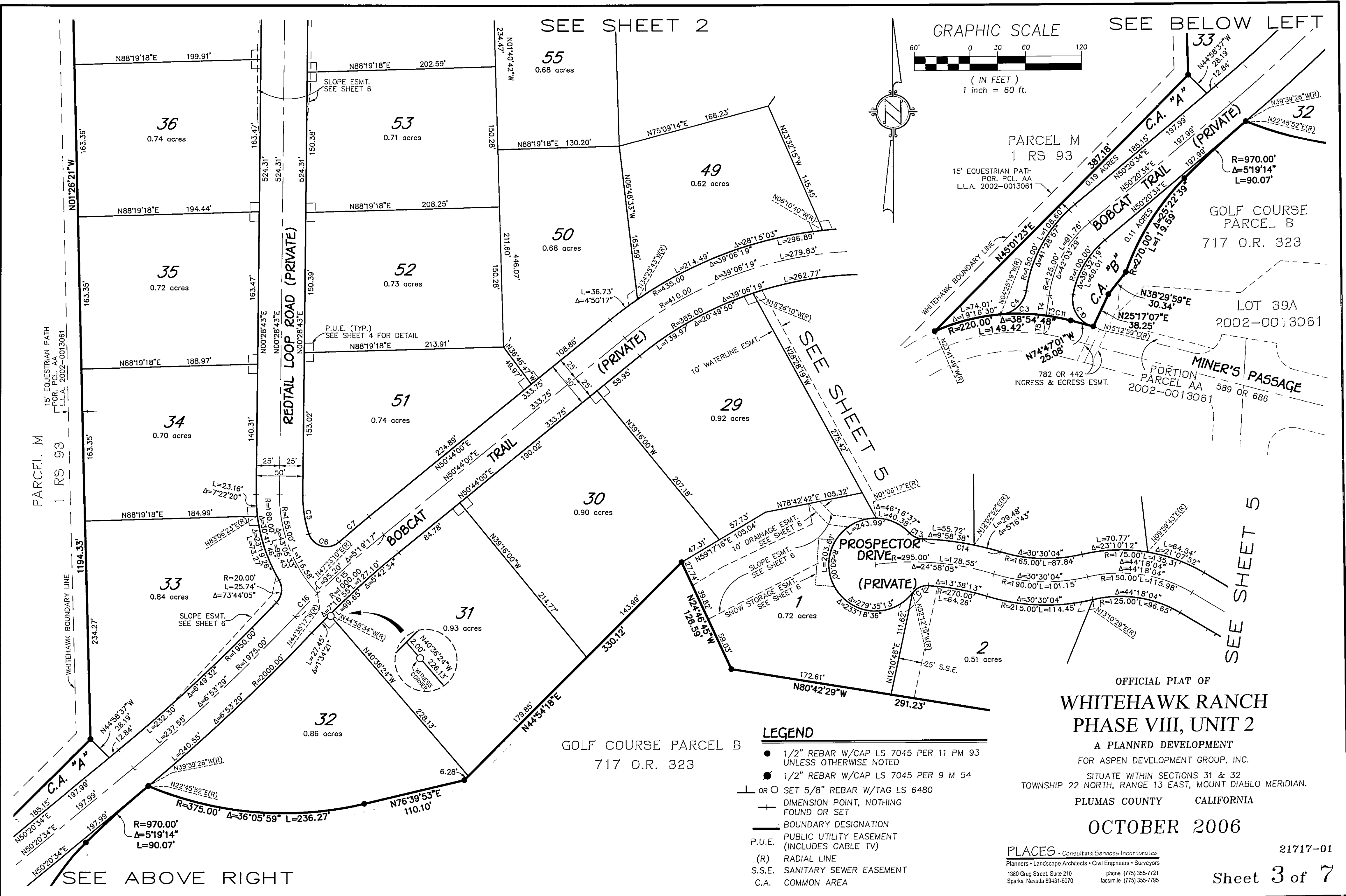
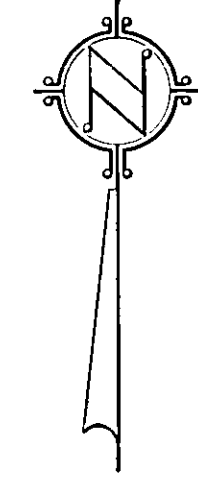
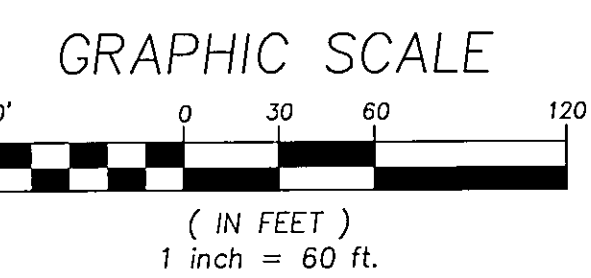


SEE SHEET 2

SEE BELOW LEFT



GOLF COURSE PARCEL B
717 O.R. 323

- LEGEND**
- 1/2" REBAR W/CAP LS 7045 PER 11 PM 93 UNLESS OTHERWISE NOTED
 - 1/2" REBAR W/CAP LS 7045 PER 9 M 54
 - ⊥ OR ○ SET 5/8" REBAR W/TAG LS 6480
 - ⊕ DIMENSION POINT, NOTHING FOUND OR SET
 - BOUNDARY DESIGNATION
 - P.U.E. PUBLIC UTILITY EASEMENT (INCLUDES CABLE TV)
 - (R) RADIAL LINE
 - S.S.E. SANITARY SEWER EASEMENT
 - C.A. COMMON AREA

OFFICIAL PLAT OF
WHITEHAWK RANCH
PHASE VIII, UNIT 2

A PLANNED DEVELOPMENT
FOR ASPEN DEVELOPMENT GROUP, INC.
SITUATE WITHIN SECTIONS 31 & 32
TOWNSHIP 22 NORTH, RANGE 13 EAST, MOUNT DIABLO MERIDIAN.
PLUMAS COUNTY CALIFORNIA

OCTOBER 2006

PLACES - Consulting Services Incorporated
Planners • Landscape Architects • Civil Engineers • Surveyors
1380 Greg Street, Suite 210 Sparks, Nevada 89431-6070 phone (775) 355-7721 facsimile (775) 355-7759

21717-01

Sheet 3 of 7