

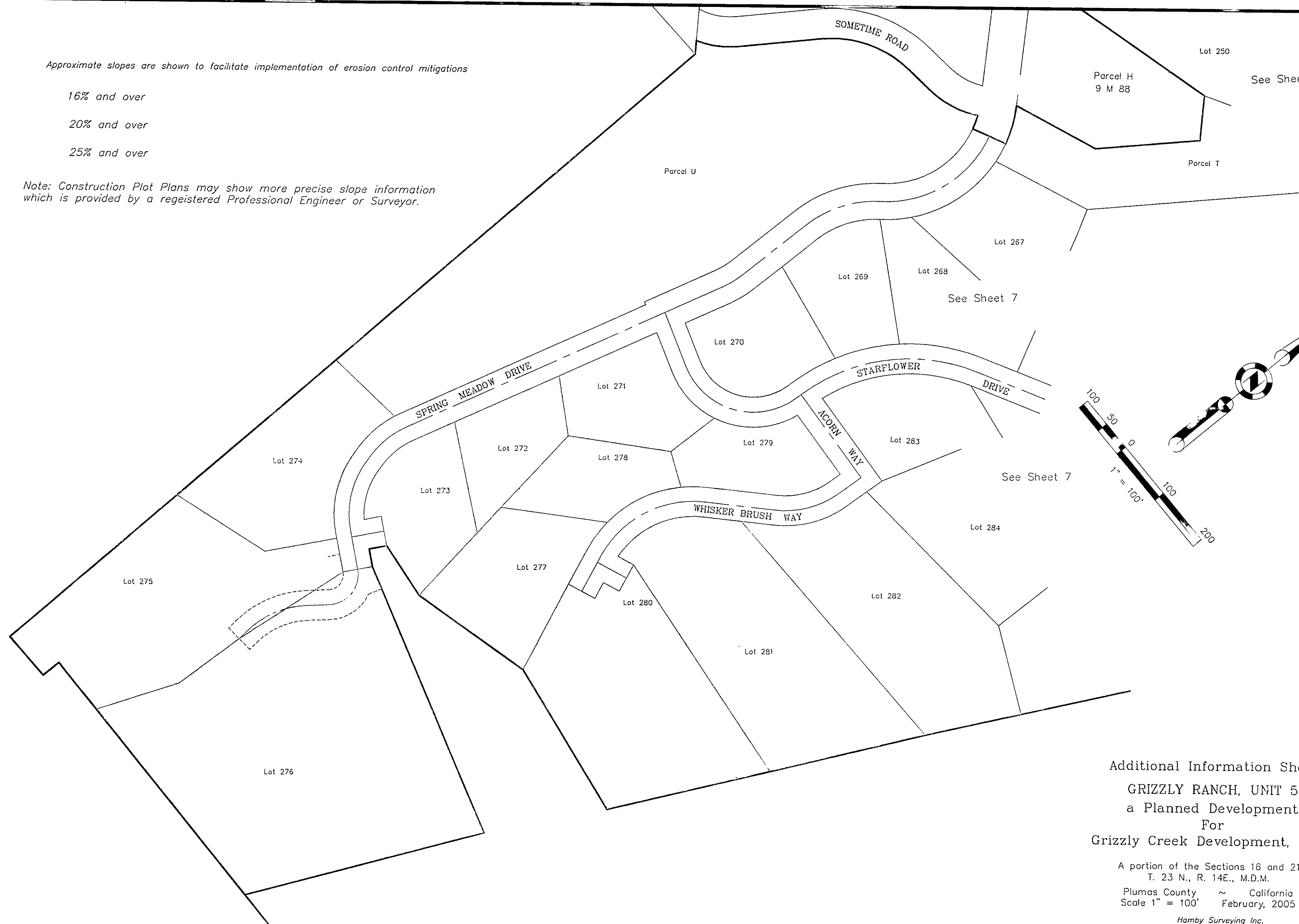
Approximate slopes are shown to facilitate implementation of erosion control mitigations

16% and over

20% and over

25% and over

Note: Construction Plot Plans may show more precise slope information which is provided by a registered Professional Engineer or Surveyor.



Additional Information Sheet
GRIZZLY RANCH, UNIT 5
a Planned Development
For
Grizzly Creek Development, L.L.C.

A portion of the Sections 16 and 21
T. 23 N., R. 14E., M.D.M.

Plumas County ~ California
Scale 1" = 100' February, 2005

Hamby Surveying Inc.
P.O. Box 1209
Portola, CA 96122
(530) 832-5571

Sheet 8 of 9