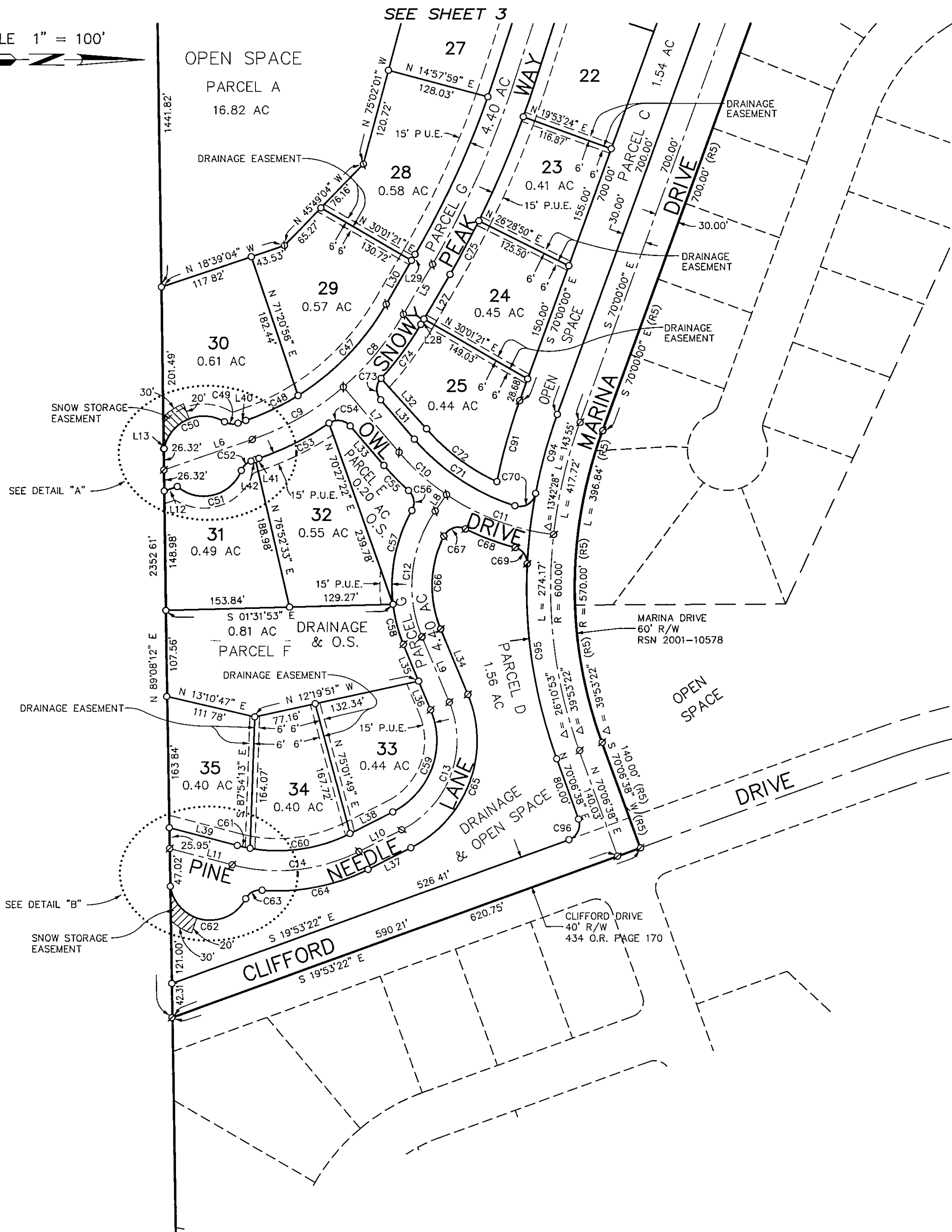


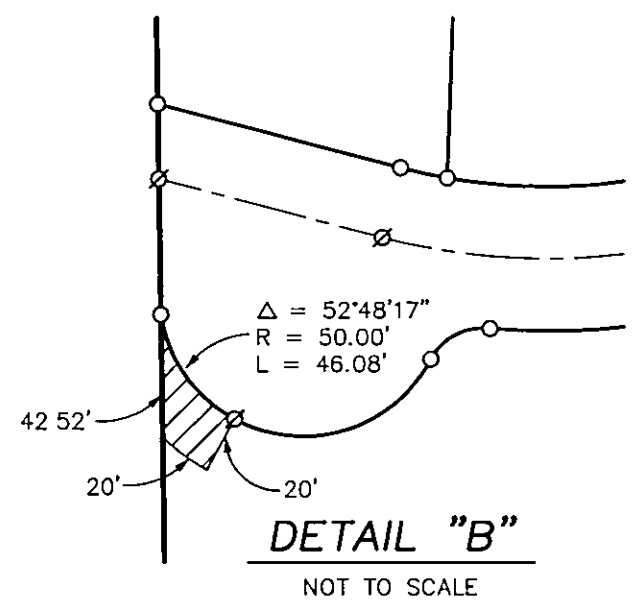
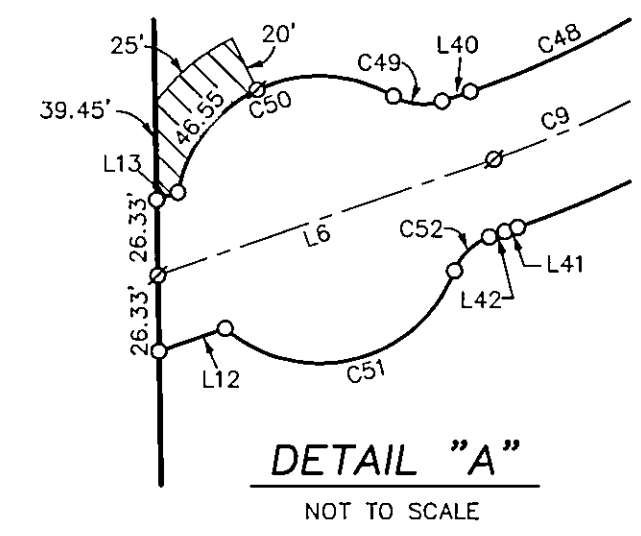
SCALE 1" = 100'



CURVE	RADIUS	LENGTH	DELTA
C1	600.00'	90.29'	08°37'19"
C2	1400.00'	329.35'	13°28'44"
C3	330.00'	115.70'	20°05'19"
C4	400.00'	202.79'	29°02'54"
C5	350.00'	137.80'	22°33'31"
C6	600.00'	110.05'	10°30'31"
C7	1200.00'	251.96'	12°01'48"
C8	350.00'	118.04'	19°19'24"
C9	350.00'	131.61'	21°32'39"
C10	300.00'	79.33'	15°09'03"
C11	300.00'	143.89'	27°28'52"
C12	166.00'	164.24'	56°41'18"
C13	125.00'	187.03'	85°43'36"
C14	225.00'	162.83'	41°27'55"
C15	20.00'	30.22'	86°33'36"
C16	20.00'	30.22'	86°33'37"
C17	560.00'	84.27'	08°37'19"
C18	575.00'	86.53'	08°37'19"
C19	625.00'	94.05'	08°37'19"
C20	645.00'	97.06'	08°37'19"
C21	20.00'	26.17'	74°58'24"
C22	20.00'	31.58'	90°28'15"
C23	20.00'	5.07'	14°32'15"
C24	1375.00'	28.94'	01°12'21"
C25	1375.00'	115.13'	04°47'51"
C26	1375.00'	115.04'	04°47'37"
C27	1375.00'	64.36'	02°40'55"
C28	355.00'	28.30'	04°34'02"
C29	355.00'	42.01'	06°46'47"
C30	20.00'	15.97'	45°45'49"
C31	50.00'	49.72'	56°58'16"
C32	50.00'	64.60'	74°01'28"
C33	50.00'	57.78'	66°12'39"
C34	50.00'	71.96'	82°27'45"
C35	20.00'	19.27'	55°11'38"
C36	305.00'	53.54'	10°03'30"
C37	1425.00'	163.04'	06°33'20"
C38	1425.00'	172.19'	06°55'24"
C39	425.00'	158.53'	21°22'17"
C40	425.00'	56.94'	07°40'36"
C41	375.00'	34.77'	05°18'47"
C42	375.00'	112.87'	17°14'45"
C43	575.00'	13.99'	01°23'40"
C44	575.00'	91.47'	09°06'51"
C45	1175.00'	30.62'	01°29'36"
C46	1175.00'	216.09'	10°32'13"
C47	325.00'	159.65'	28°08'44"
C48	325.00'	72.16'	12°43'18"
C49	20.00'	17.45'	49°59'42"
C50	50.00'	95.99'	109°59'42"

CURVE	RADIUS	LENGTH	DELTA
C51	50.00'	95.99'	109°59'41"
C52	20.00'	17.45'	49°59'41"
C53	375.00'	98.19'	15°00'09"
C54	20.00'	29.13'	83°27'31"
C55	325.00'	44.10'	07°46'28"
C56	20.00'	27.21'	77°56'16"
C57	191.00'	121.47'	36°26'13"
C58	191.00'	51.89'	15°33'56"
C59	100.00'	149.62'	85°43'36"
C60	200.00'	128.24'	36°44'20"
C61	200.00'	16.50'	04°43'35"
C62	50.00'	125.15'	143°24'47"
C63	20.00'	24.60'	70°29'15"
C64	250.00'	136.57'	31°18'00"
C65	150.00'	224.43'	85°43'36"
C66	141.00'	119.65'	48°37'08"
C67	20.00'	31.55'	90°22'26"
C68	325.00'	66.50'	11°43'24"
C69	20.00'	27.18'	77°52'44"
C70	20.00'	33.85'	96°57'39"
C71	275.00'	152.06'	31°40'53"
C72	255.00'	110.51'	24°49'46"
C73	20.00'	29.13'	83°27'30"
C74	375.00'	83.66'	12°46'54"
C75	1225.00'	75.73'	03°32'31"
C76	1225.00'	140.91'	06°35'26"
C77	1225.00'	40.58'	01°53'52"
C78	625.00'	38.51'	03°31'48"
C79	625.00'	76.12'	06°58'43"
C80	325.00'	127.96'	22°33'32"
C81	375.00'	66.36'	10°08'19"
C82	375.00'	123.76'	18°54'34"
C83	520.00'	125.94'	13°52'37"
C84	780.00'	49.08'	03°36'18"
C85	780.00'	96.79'	07°06'35"
C86	780.00'	93.62'	06°52'37"
C87	780.00'	100.07'	07°21'03"
C88	780.00'	100.07'	07°21'02"
C89	780.00'	100.07'	07°21'02"
C90	780.00'	69.56'	05°06'34"
C91	680.00'	104.84'	08°50'00"
C92	730.00'	217.76'	17°05'29"
C93	730.00'	344.37'	27°01'44"
C94	630.00'	102.22'	09°17'47"
C95	630.00'	247.89'	22°32'40"
C96	20.00'	31.42'	90°00'00"
C97	20.00'	16.38'	46°54'44"
C98	50.00'	72.04'	82°33'12"

LINE	LENGTH	BEARING
L1	121.74'	S 50°28'07" W
L2	49.74'	S 59°05'26" W
L3	77.83'	S 59°57'27" E
L4	52.87'	S 82°30'59" E
L5	71.95'	S 59°58'39" E
L6	116.12'	S 19°06'37" E
L7	107.15'	S 49°20'45" W
L8	24.91'	S 55°48'18" E
L9	88.35'	N 67°30'24" E
L10	59.84'	S 26°46'00" E
L11	80.14'	S 14°41'55" W
L12	17.13'	N 19°06'37" W
L13	0.64'	S 19°06'37" E
L14	73.09'	S 50°28'07" W
L15	42.77'	S 50°28'07" W
L16	73.09'	N 50°28'07" E
L17	43.04'	N 50°28'07" E
L18	4.91'	S 59°20'07" W
L19	24.10'	S 59°05'26" W
L20	4.59'	N 59°18'04" E
L21	24.74'	N 59°05'26" E
L22	65.18'	N 59°57'27" W
L23	12.66'	N 59°57'27" W
L24	77.83'	S 59°57'27" E
L25	52.87'	N 82°30'59" W
L26	52.87'	S 82°30'59" E
L27	64.28'	N 59°58'39" W
L28	7.67'	N 59°58'39" W
L29	8.81'	S 59°58'39" E
L30	63.14'	S 59°58'39" E
L31	64.72'	S 49°20'45" W
L32	84.62'	S 47°48'10" W
L33	64.72'	N 49°20'45" E
L34	88.35'	S 67°30'24" W
L35	49.60'	N 67°30'24" E
L36	38.75'	N 67°30'24" E
L37	59.84'	N 26°46'00" W
L38	59.84'	S 26°46'00" E
L39	87.10'	S 14°41'55" W
L40	10.31'	S 19°06'37" E
L41	4.64'	N 19°06'37" W
L42	5.67'	N 19°06'37" W
L43	19.50'	N 30°54'34" W
L44	7.37'	N 00°13'40" W



- LEGEND**
- ⊗ CALCULATED POINT, NO MONUMENT FOUND OR SET
 - SET 5/8" REBAR WITH PLASTIC CAP MARKED R.C.E. 29113
 - FOUND MONUMENT AS NOTED
 - FOUND 5/8" REBAR & CAP MARKED R.C.E. 29113 PER R5

THE RIDGE

FOR
BAILEY CREEK RIDGE, LLC

A PORTION OF THE SOUTH HALF
OF SECTION 13, TOWNSHIP 28 NORTH,
RANGE 7 EAST, M.D.M.
PLUMAS COUNTY, CALIFORNIA

RAR
ROLLS ANDERSON & ROLLS
CIVIL ENGINEERS
115 YELLOWSTONE DRIVE • CHICO, CALIFORNIA 95973-5811
TELEPHONE 530-895-1422