

CURVE TABLE			
CURVE	LENGTH	RADIUS	DELTA
C1	23.56	15.00	90°00'00"
C2	27.34	370.00	4°14'01"
C3	29.56	400.00	4°14'01"
C4	31.77	430.00	4°14'01"
C5	62.59	430.00	8°20'23"
C6	20.00	430.00	2°39'55"
C7	20.02	430.00	2°40'05"
C8	68.78	430.00	9°09'55"
C9	30.22	370.00	4°40'47"
C10	117.26	370.00	18°09'30"
C11	3.76	370.00	0°34'57"
C12	44.08	370.00	6°49'32"
C13	51.72	400.00	7°24'30"
C14	55.60	430.00	7°24'30"
C15	104.18	870.00	6°51'39"
C16	13.55	870.00	0°53'32"
C17	12.09	15.00	46°11'13"
C18	82.53	50.00	94°34'32"
C19	123.88	50.00	141°57'38"
C20	31.27	50.00	35°50'16"
C21	96.80	930.00	5°57'50"
C22	29.04	930.00	1°47'21"
C23	23.56	15.00	90°00'00"
C24	66.52	29.00	131°25'45"
C25	162.86	71.00	131°25'45"
C26	126.83	70.00	103°48'45"
C27	53.40	28.00	109°16'00"



1" = 100'

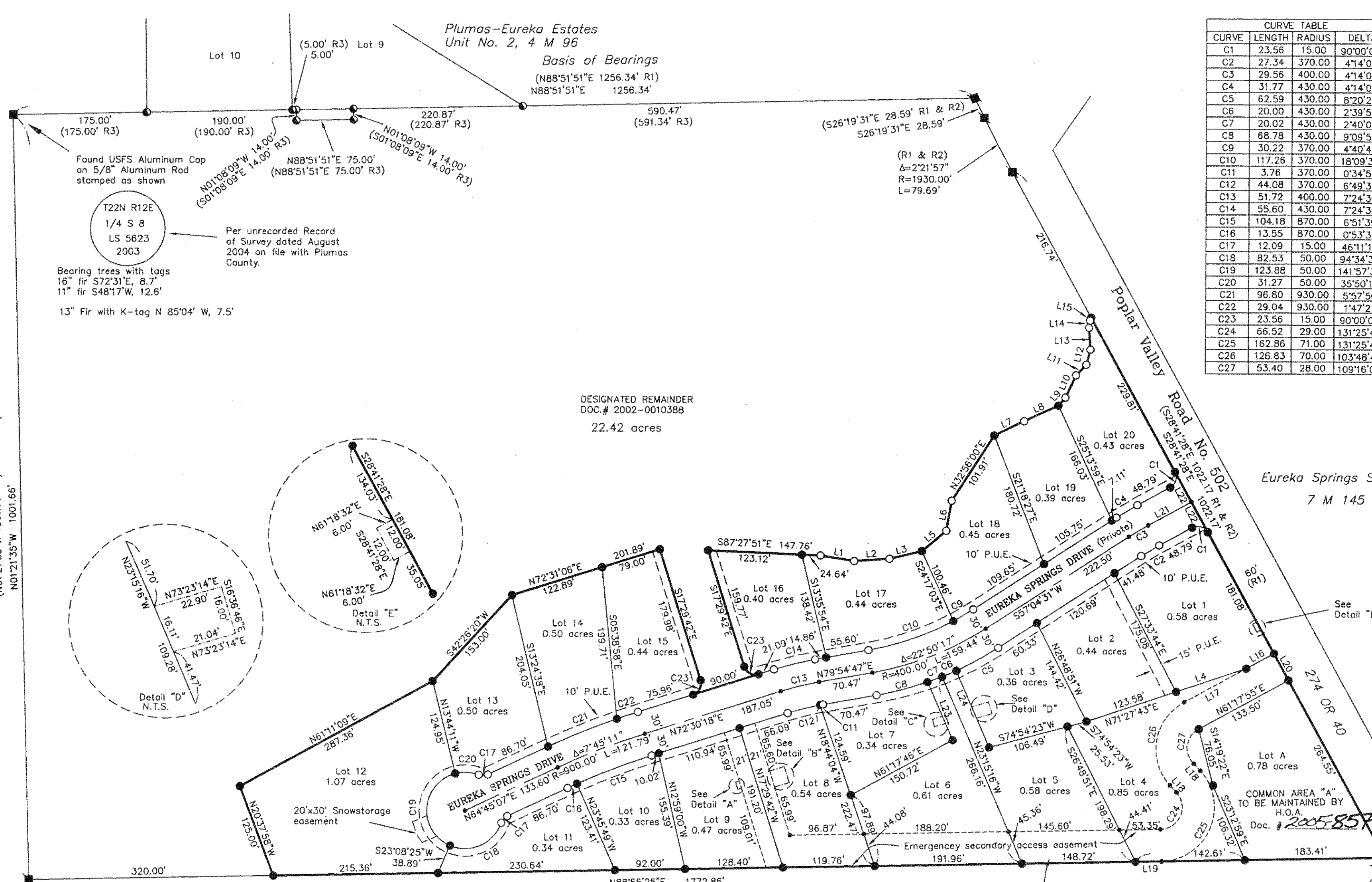
**Basis of Bearings**

The Basis of Bearings of this map is the North line of the overall parcel shown as N88°51'51"E, in Book 9 of Record of Surveys at page 75, Plumas County records.

LINE TABLE		
LINE	BEARING	LENGTH
L1	S80°56'36"E	44.21'
L2	N86°19'15"E	45.91'
L3	N76°23'38"E	43.40'
L4	N71°27'43"E	96.29'
L5	N49°47'32"E	41.30'
L6	N09°40'37"E	40.14'
L7	S64°01'44"W	43.33'
L8	S65°32'55"W	49.11'
L9	N41°12'38"E	14.04'
L10	N25°07'10"E	32.33'
L11	N44°07'58"E	19.21'
L12	N15°03'19"E	20.44'
L13	N04°02'45"W	28.78'
L14	N07°53'44"E	9.42'
L15	N21°22'11"E	4.20'
L16	N61°17'55"E	41.15'
L17	N61°17'55"E	92.36'
L18	N42°30'20"W	12.57'
L19	N88°55'25"E	34.15'
L20	S28°41'28"E	40.00'
L21	S61°18'32"W	63.79'
L22	S28°41'28"E	45.00'

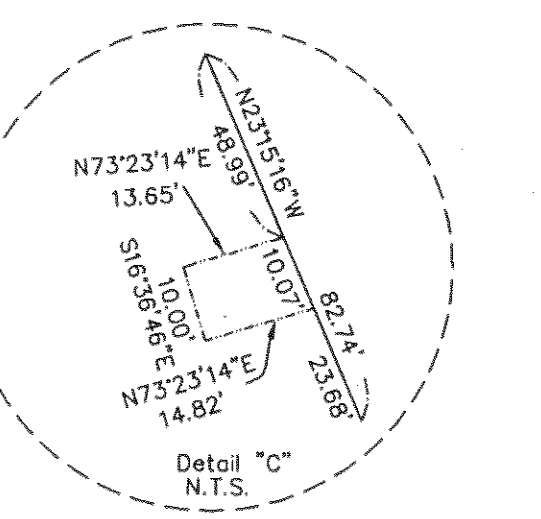
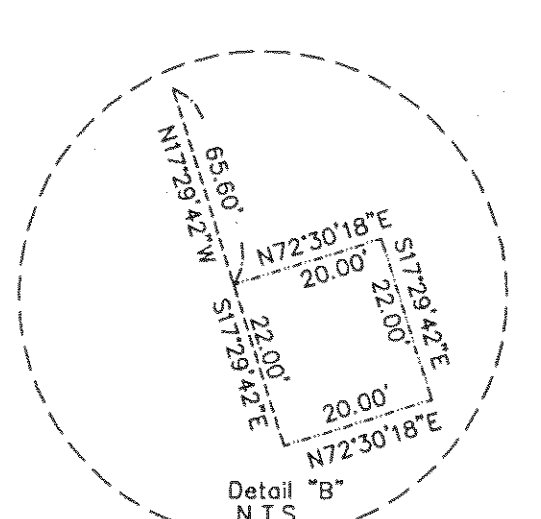
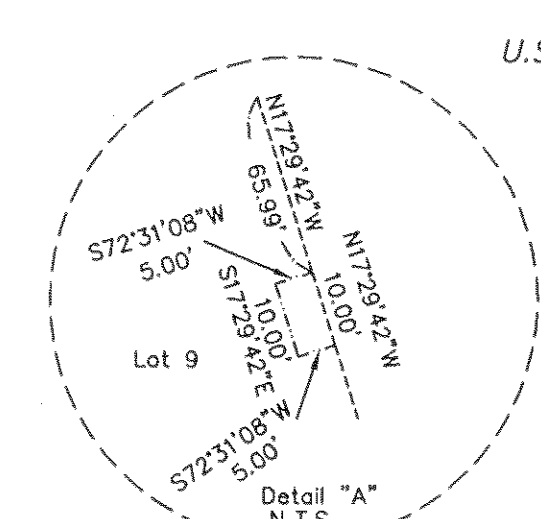
Eureka Springs Subdivision  
7 M 145

South West corner of Eureka Springs Subdivision Unit # 1  
7 M 145



**LEGEND**

- FOUND point as described
- FOUND 5/8" Rebar with Aluminum Cap LS 2843 per (R1)
- Set 5/8" Rebar with Plastic Cap LS 2843
- Set 5/8" rebar with Aluminum Cap LS 2843
- ◐ FOUND 5/8" rebar with Aluminum Cap LS 2843 per (R3)
- Nothing found or set
- (R1) RECORD per 9 RS 75
- (R2) RECORD per 7 M 145
- (R3) RECORD per 11 RS 113
- Denotes P.U.E. Public Utility Easement
- - - - Denotes Emergency Access Easement
- - - - Drainage easements
- H.O.A. Home Owners Association



THE VILLAGE AT PLUMAS PINES PHASE 1  
for  
The Village at Plumas Pines, LLC,  
a Nevada Limited Liability Company  
A portion of the SE 1/4 of Section 8, T. 22 N., R. 12 E., M.D.M.  
being a portion of Mapes Ranch Parcel of 9 RS 75  
Plumas County, California  
Scale 1"=100' September, 2004

Hamby Surveying Inc.  
P.O. Box 1209  
Portola, CA 96122  
(530) 832-5571