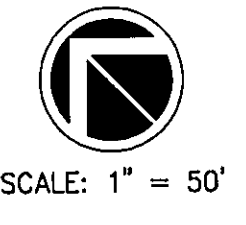
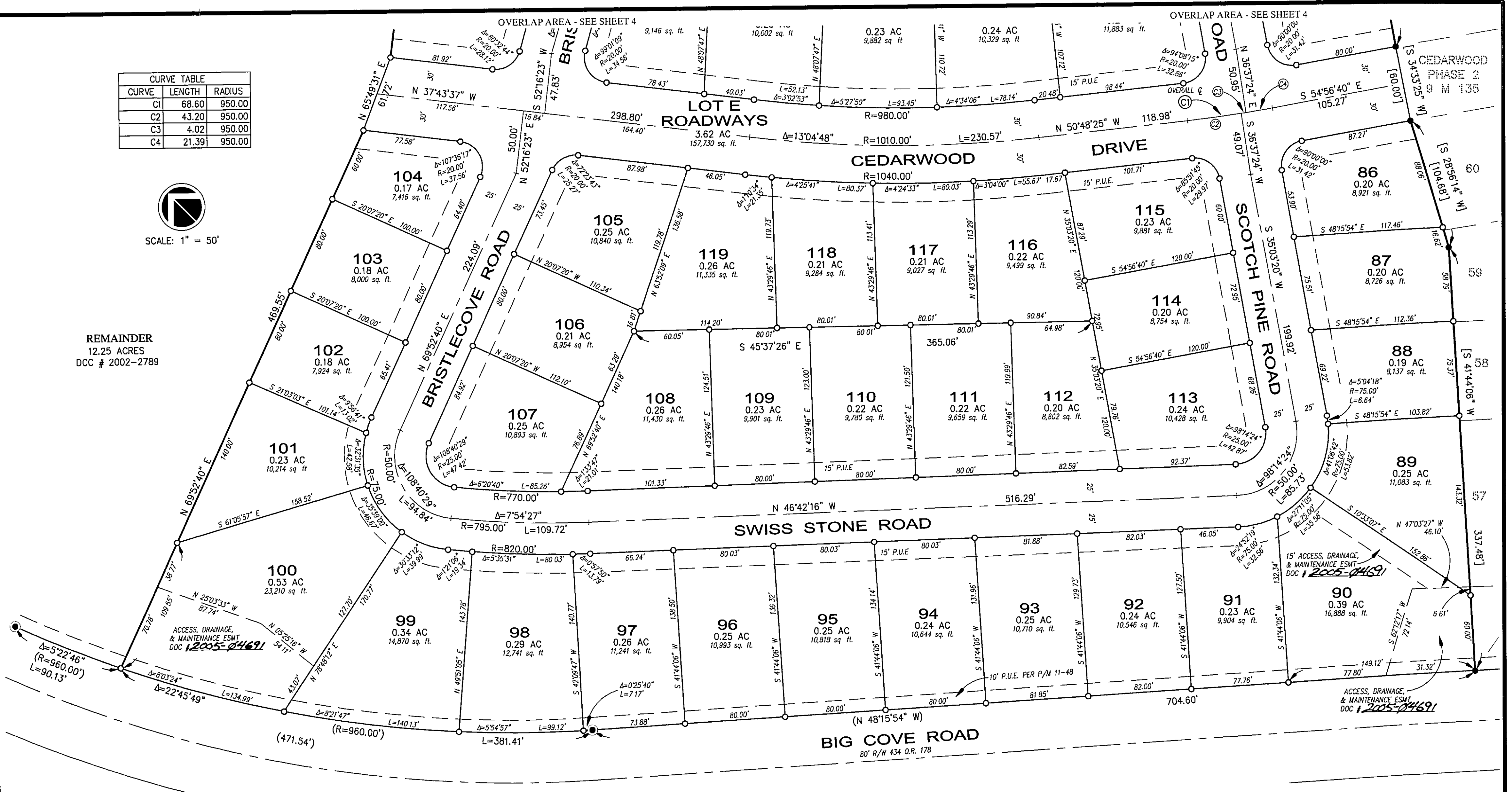


CURVE TABLE		
CURVE	LENGTH	RADIUS
C1	68.60	950.00
C2	43.20	950.00
C3	4.02	950.00
C4	21.39	950.00



REMAINDER
12.25 ACRES
DOC # 2002-2789

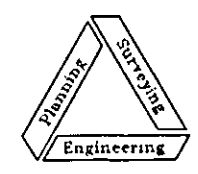


- LEGEND**
- FOUND REBAR PLS #6503 PER 9 M 135
 - FOUND 1/2" YELLOW PLASTIC CAP STAMPED "LS 3989" PER 12 RS 64
 - [] RECORD & MEASURED DATA PER 9 M 135
 - () RECORD & MEASURED DATA PER 12 RS 64
 - SET 1/2" REBAR CAPPED w/ YELLOW PLASTIC & STAMPED "LS 4647"

BASIS OF BEARINGS
THE BASIS OF BEARINGS FOR THIS PROJECT IS THE NORTH LINE OF BIG COVE ROAD, AS SHOWN ON 12 RS 64, BEING N.48°15'54"W.

SUBDIVISION MAP
OF
CEDARWOOD, PHASE 3 & 4

A PORTION OF FOXWOOD
IN SECTION 18, T28N, R8E MDB&M
PLUMAS COUNTY, CALIFORNIA



NST Engineering, Inc.
1495 Riverside Drive
Susanville, CA 96130
(530) 257-5173
2003-093

APRIL, 2005

SHEET 3 OF 5