

NOTES:

1. A 10' WIDE PUBLIC UTILITY EASEMENT (P.U.E.), UNLESS SHOWN HEREON AS A DIFFERENT WIDTH, SHALL EXIST ON ALL FRONT, SIDE AND BACK LINES OF ALL LOTS SHOWN ON THIS MAP. THESE EASEMENTS ARE HEREBY DEDICATED TO THE SPECIFIC SERVING UTILITY AGENCIES.

10' WIDE P.U.E. TYPICAL, SEE NOTE 1 HEREON.

LINE TABLE		
LINE	LENGTH	BEARING
L16	38.71'	S59°13'22"W
L18	94.31'	N13°19'03"W
L19	51.30'	N54°20'29"W
L20	40.07'	N50°50'00"W
L21	40.67'	N42°24'41"W
L22	40.00'	N42°17'58"W
L23	3.10'	N33°43'19"W
L24	12.09'	N63°21'20"W
L25	90.52'	S87°55'32"W
L26	116.48'	N22°10'30"E
L27	102.71'	S21°51'40"E

CURVE TABLE			
CURVE	LENGTH	RADIUS	DELTA
C29	61.41'	330.00'	10°39'41"
C30	47.12'	30.00'	90°00'00"
C31	47.12'	30.00'	90°00'00"
C32	104.54'	310.00'	19°19'20"
C33	99.93'	310.00'	18°28'13"
C34	88.45'	310.00'	16°20'54"
C35	76.82'	390.00'	11°17'11"
C36	27.97'	550.00'	2°54'48"
C37	47.12'	30.00'	90°00'00"
C38	47.12'	30.00'	90°00'00"
C39	150.31'	125.00'	68°53'55"
C40	99.66'	200.00'	28°33'05"
C41	84.71'	170.00'	28°33'05"
C42	31.42'	30.00'	60°00'00"
C43	69.04'	100.00'	39°33'33"
C44	101.49'	50.00'	116°17'37"
C45	25.22'	50.00'	28°54'09"
C46	47.41'	50.00'	54°19'49"
C47	32.81'	50.00'	37°35'43"
C48	32.97'	30.00'	62°57'52"
C49	94.71'	690.00'	7°51'53"
C50	124.78'	690.00'	10°21'40"
C51	22.29'	690.00'	1°51'03"
C52	59.54'	155.00'	22°00'31"
C53	81.68'	155.00'	30°11'30"
C54	88.44'	125.00'	40°32'09"
C55	11.44'	155.00'	4°13'50"
C56	78.91'	300.00'	15°04'16"

LEGEND

- △ FOUND MONUMENT AS NOTED.
- SET 1/2" REBAR WITH ALUMINUM CAP STAMPED L.S. 7045
- + COMPUTED POINT, NOTHING FOUND OR SET.
- (R1) RECORD DATA PER 174 O.R. 415, PLUMAS COUNTY OFFICIAL RECORDS; AND PER THE "AS CONSTRUCTED PLANS FOR PROJECT CALIF. F.H. 24-1(4) ROUTE NO. 24 - GOLD LAKE, PREPARED BY THE UNITED STATES DEPARTMENT OF TRANSPORTATION, FEDERAL HIGHWAY ADMINISTRATION, BUREAU OF PUBLIC ROADS", DATED FEBRUARY 28, 1974.
- (R2) RECORD DATA PER 4 M 71
- P.U.E. PUBLIC UTILITY EASEMENT
- MEAS. MEASURED DATA
- [C] CALCULATED DATA BASED UPON RECORD INFORMATION.
- O.A. OVERALL DIMENSION

**GRAEAGLE SUBDIVISION
UNIT 9**

FOR:
GRAEAGLE LAND AND WATER COMPANY,
A CALIFORNIA CORPORATION
BEING A PORTION OF DOC. 2001-11223
WITHIN PORTIONS OF: SECTIONS 22 AND 23, T. 22 N., R. 12 E., M.D.B.M.
IN THE UNINCORPORATED AREA OF
PLUMAS COUNTY, CALIFORNIA

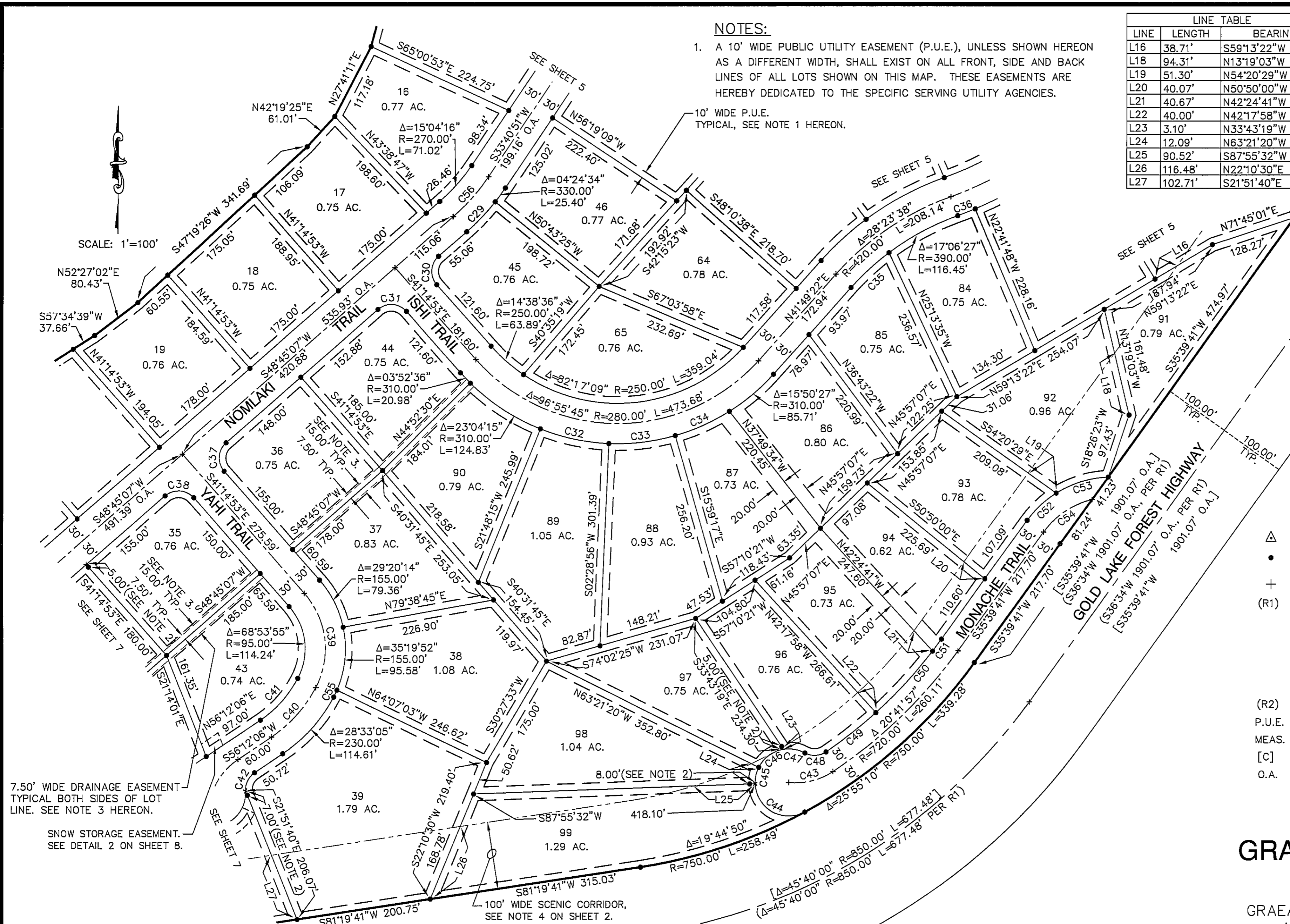
PREPARED BY:
BASTIAN ENGINEERING
211 POPLAR VALLEY ROAD
BLAIRSDEN, CALIFORNIA 96103
L.S. 7045

NOVEMBER, 2015

SHEET 6 OF 9

NOTES CONTINUED:

2. SET 1/2" REBAR WITH ALUMINUM CAP STAMPED L.S. 7045 WC, FOR A WITNESS CORNER TO THE TRUE LOT CORNER LOCATION.
3. THE 15.00' WIDE DRAINAGE EASEMENT HEREON IS HEREBY OFFERED FOR DEDICATION TO PLUMAS COUNTY.



7.50' WIDE DRAINAGE EASEMENT TYPICAL BOTH SIDES OF LOT LINE. SEE NOTE 3 HEREON.

SNOW STORAGE EASEMENT. SEE DETAIL 2 ON SHEET 8.

[S81°19'41"W 1768.06' O.A.]
[S82°14'W 1768.06' PER R1]

10 M 140