

SCALE: 1"=200'

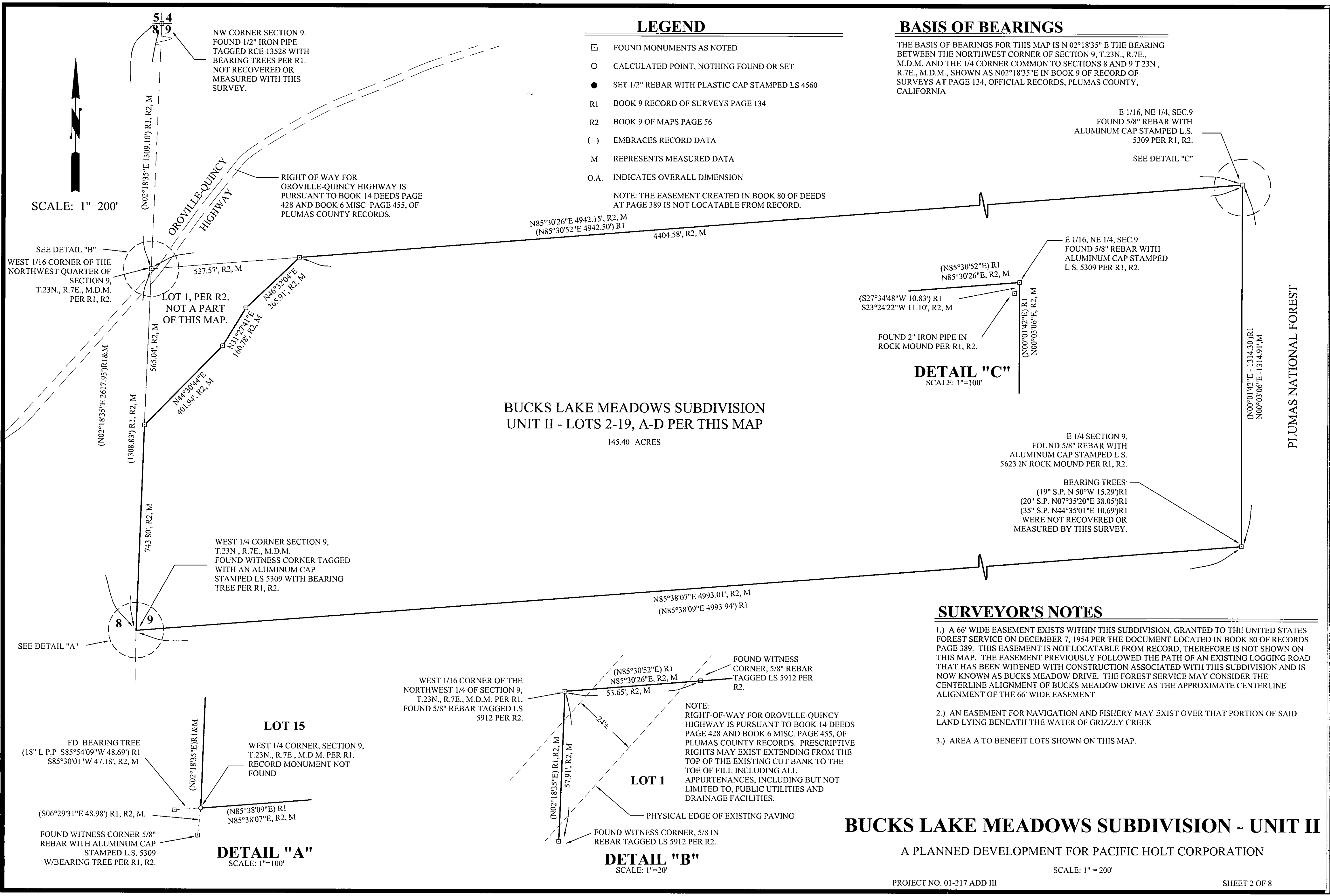
LEGEND

- FOUND MONUMENTS AS NOTED
- CALCULATED POINT, NOTHING FOUND OR SET
- SET 1/2" REBAR WITH PLASTIC CAP STAMPED LS 4560
- R1 BOOK 9 RECORD OF SURVEYS PAGE 134
- R2 BOOK 9 OF MAPS PAGE 56
- () EMBRACES RECORD DATA
- M REPRESENTS MEASURED DATA
- O.A. INDICATES OVERALL DIMENSION

NOTE: THE EASEMENT CREATED IN BOOK 80 OF DEEDS AT PAGE 389 IS NOT LOCATABLE FROM RECORD.

BASIS OF BEARINGS

THE BASIS OF BEARINGS FOR THIS MAP IS N 02°18'35" E THE BEARING BETWEEN THE NORTHWEST CORNER OF SECTION 9, T.23N., R.7E., M.D.M. AND THE 1/4 CORNER COMMON TO SECTIONS 8 AND 9 T.23N., R.7E., M.D.M., SHOWN AS N02°18'35"E IN BOOK 9 OF RECORD OF SURVEYS AT PAGE 134, OFFICIAL RECORDS, PLUMAS COUNTY, CALIFORNIA



BUCKS LAKE MEADOWS SUBDIVISION UNIT II - LOTS 2-19, A-D PER THIS MAP

145.40 ACRES

DETAIL "C"

SCALE: 1"=100'

SURVEYOR'S NOTES

- 1.) A 66' WIDE EASEMENT EXISTS WITHIN THIS SUBDIVISION, GRANTED TO THE UNITED STATES FOREST SERVICE ON DECEMBER 7, 1954 PER THE DOCUMENT LOCATED IN BOOK 80 OF RECORDS PAGE 389. THIS EASEMENT IS NOT LOCATABLE FROM RECORD, THEREFORE IS NOT SHOWN ON THIS MAP. THE EASEMENT PREVIOUSLY FOLLOWED THE PATH OF AN EXISTING LOGGING ROAD THAT HAS BEEN WIDENED WITH CONSTRUCTION ASSOCIATED WITH THIS SUBDIVISION AND IS NOW KNOWN AS BUCKS MEADOW DRIVE. THE FOREST SERVICE MAY CONSIDER THE CENTERLINE ALIGNMENT OF BUCKS MEADOW DRIVE AS THE APPROXIMATE CENTERLINE ALIGNMENT OF THE 66' WIDE EASEMENT
- 2.) AN EASEMENT FOR NAVIGATION AND FISHERY MAY EXIST OVER THAT PORTION OF SAID LAND LYING BENEATH THE WATER OF GRIZZLY CREEK
- 3.) AREA A TO BENEFIT LOTS SHOWN ON THIS MAP.

BUCKS LAKE MEADOWS SUBDIVISION - UNIT II

A PLANNED DEVELOPMENT FOR PACIFIC HOLT CORPORATION

SCALE: 1" = 200'

PROJECT NO. 01-217 ADD III

SHEET 2 OF 8