

LINE TABLE		
LINE	LENGTH	BEARING
L1	15.18'	S88°56'36"E
L2	10.53'	N77°25'43"E
L3	86.99'	N77°25'43"E
L4	62.37'	S72°06'04"E
L5	83.08'	S82°36'46"W
L6	39.94'	S82°36'46"W
L7	15.18'	S88°56'36"E
L8	40.02'	N77°25'43"E
L9	12.66'	N12°34'17"W
L10	39.40'	N101°3'42"E
L11	62.37'	S72°06'04"E
L12	46.34'	S82°36'46"W
L13	76.68'	S82°36'46"W
L14	15.78'	S88°56'36"E
L15	35.24'	N77°25'43"E
L16	7.50'	N77°25'43"E
L17	18.84'	S72°06'04"E
L18	49.78'	S82°36'46"W
L19	19.11'	N12°34'17"W
L20	6.51'	N12°34'17"W

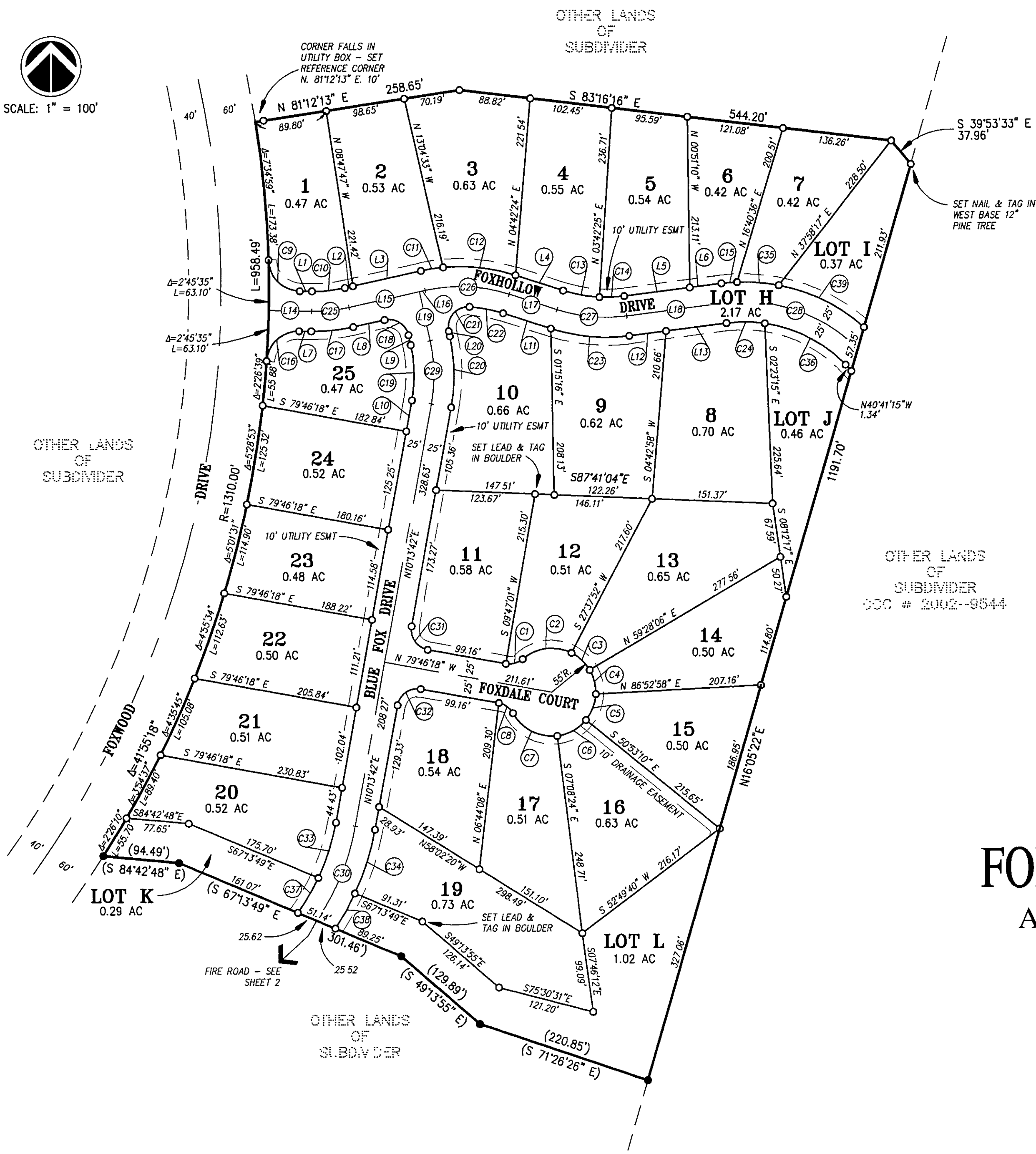


SCALE: 1" = 100'

CURVE TABLE				
CURVE	DELTA	RADIUS	LENGTH	CHORD
C1	51°19'04"	25.00'	22.39'	N74°34'10"E 21.65'
C2	67°42'06"	55.00'	64.99'	S82°45'41"W 61.27'
C3	32°51'23"	55.00'	31.54'	N46°57'35"W 31.11'
C4	33°00'46"	55.00'	31.69'	N14°01'31"W 31.25'
C5	36°37'57"	55.00'	35.16'	N20°47'51"E 34.57'
C6	43°44'46"	55.00'	41.99'	N60°59'13"E 40.98'
C7	68°41'10"	55.00'	65.93'	S62°47'49"E 62.06'
C8	51°19'04"	25.00'	22.39'	N54°06'46"W 21.65'
C9	87°14'25"	40.00'	60.91'	S45°19'24"E 55.19'
C10	13°37'41"	175.00'	41.62'	N84°14'34"E 41.53'
C11	70°7'50"	225.00'	28.00'	S80°59'38"W 27.98'
C12	23°20'22"	225.00'	91.65'	N83°46'15"W 91.02'
C13	15°06'34"	175.00'	46.15'	S79°39'21"E 46.02'
C14	10°10'36"	175.00'	31.08'	N87°42'04"E 31.04'
C15	5°05'35"	225.00'	20.00'	S85°09'34"W 19.99'
C16	87°14'25"	40.00'	60.91'	S47°26'11"W 55.19'
C17	13°37'41"	225.00'	53.52'	N84°14'34"E 53.39'
C18	90°00'00"	25.00'	39.27'	N57°34'17"W 35.36'
C19	22°47'58"	175.00'	69.64'	N01°10'18"W 69.18'
C20	22°47'58"	225.00'	89.53'	N01°10'18"W 88.94'
C21	106°27'37"	25.00'	46.45'	S40°39'31"W 40.05'
C22	14°00'36"	175.00'	42.79'	N79°06'22"W 42.68'
C23	25°17'09"	225.00'	99.30'	S84°44'39"E 98.49'
C24	40°46'24"	175.00'	124.54'	N61°04'28"W 121.92'
C25	3°33'25"	200.00'	12.42'	N89°16'41"E 12.41'
C26	11°51'34"	200.00'	41.40'	N78°01'51"W 41.32'
C27	8°31'37"	200.00'	29.76'	S76°21'53"E 29.74'
C28	23°12'42"	200.00'	81.02'	N56°30'13"W 80.47'
C29	8°47'21"	200.00'	30.68'	N05°50'01"E 30.65'
C30	10°44'42"	300.00'	56.26'	N29°27'30"E 56.18'
C31	90°00'00"	25.00'	39.27'	S34°46'18"E 35.36'
C32	90°00'00"	25.00'	39.27'	S55°13'42"E 35.36'
C33	15°11'09"	275.00'	72.89'	N17°49'16"E 72.67'
C34	14°46'43"	325.00'	83.83'	N17°37'03"E 83.60'
C35	13°22'47"	225.00'	52.54'	N85°36'15"W 52.42'
C36	40°46'24"	175.00'	124.54'	N61°04'28"W 121.92'
C37	10°31'56"	275.00'	50.55'	N30°40'49"E 50.48'
C38	8°53'02"	325.00'	50.39'	N29°26'56"E 50.34'
C39	30°32'32"	225.00'	119.94'	N63°38'35"W 118.52'

LEGEND

- FOUND 1/2" REBAR CAPPED "LS 3989" PER 12 RS 64
- SET 1/2" REBAR CAPPED "LS 3989", EXCEPT AS NOTED
- () RECORD & MEASURED PER 12 RS 64



NOTES:

- LOT H - ROADS & PUBLIC UTILITIES TO HOMEOWNERS ASSOC.
- LOTS I, J, K & L - OPEN SPACE TO HOMEOWNERS ASSOC.

SUBDIVISION MAP
OF
FOXHOLLOW, PHASE 1
A PORTION OF FOXWOOD

FOR FOXWOOD-ALMANOR, LLC
IN SECTION 18, T28N, R8E MDB&M
PLUMAS COUNTY, CALIFORNIA

SCALE: 1" = 100'

NST Engineering, Inc.
1495 Riverside Drive
Susanville, CA 96130
(530) 257-5173