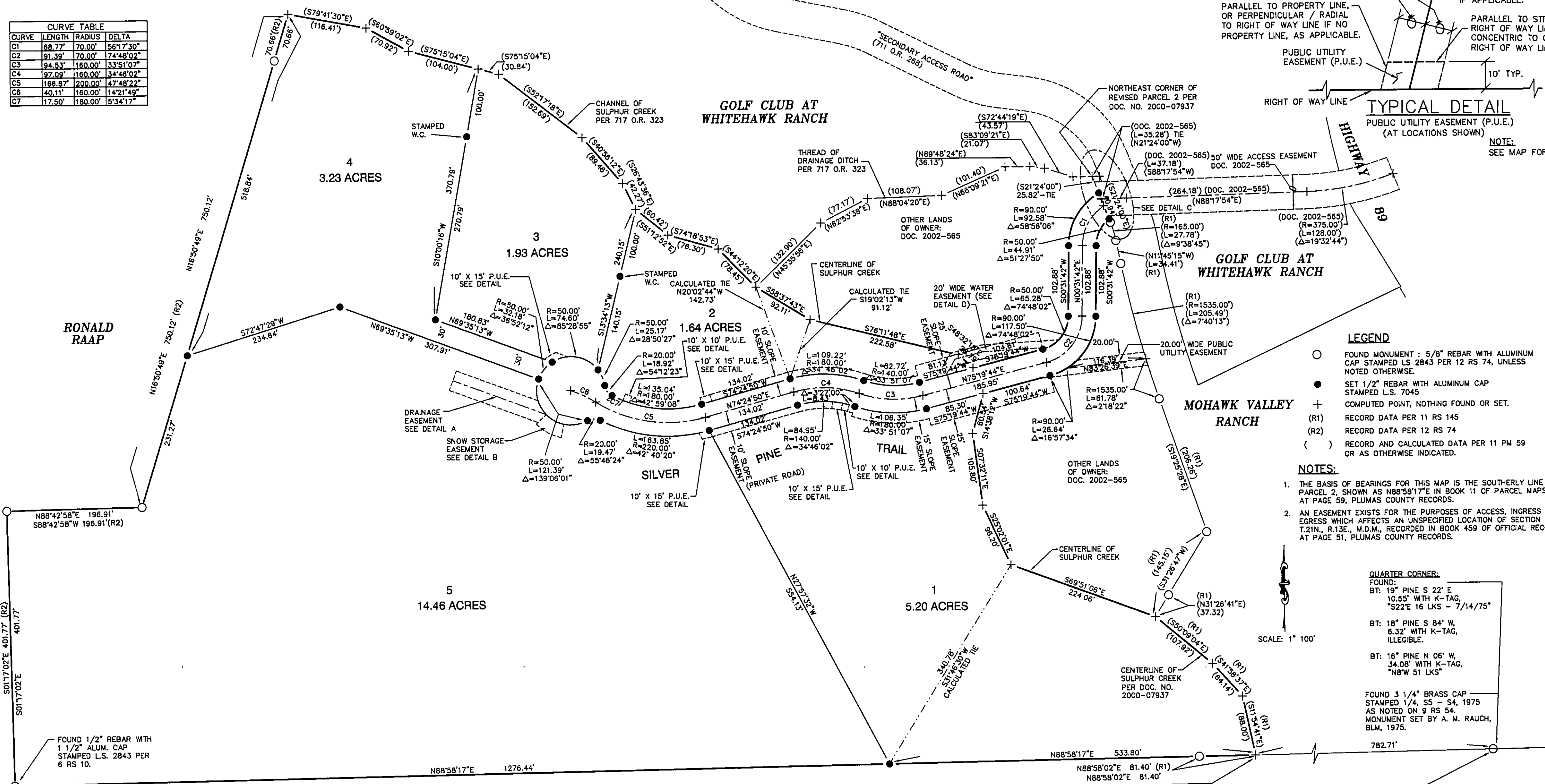
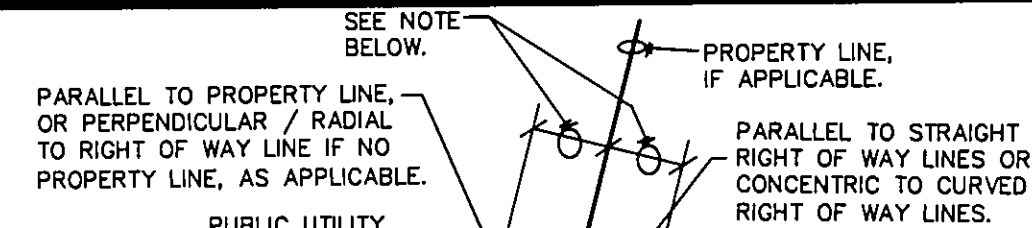


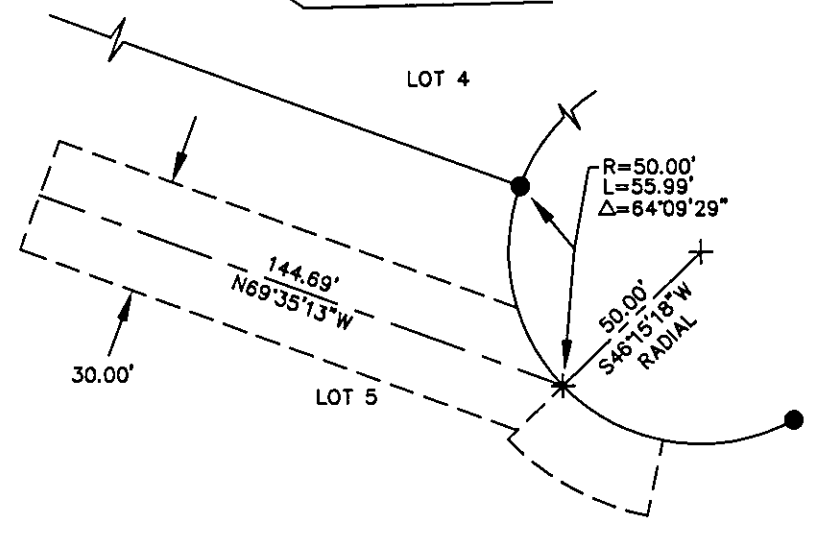
CURVE	LENGTH	RADIUS	DELTA
C1	68.77'	70.00'	56°17'30"
C2	91.39'	70.00'	74°49'02"
C3	94.53'	160.00'	33°51'07"
C4	97.09'	160.00'	34°48'02"
C5	168.87'	200.00'	47°48'22"
C6	40.11'	160.00'	14°21'49"
C7	17.50'	180.00'	5°34'17"



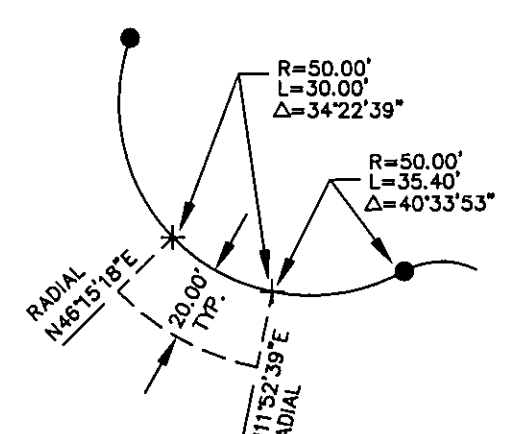
- LEGEND**
- FOUND MONUMENT: 5/8" REBAR WITH ALUMINUM CAP STAMPED LS 2843 PER 12 RS 74, UNLESS NOTED OTHERWISE.
 - SET 1/2" REBAR WITH ALUMINUM CAP STAMPED L.S. 7045
 - ⊕ COMPUTED POINT, NOTHING FOUND OR SET.
 - (R1) RECORD DATA PER 11 RS 145
 - (R2) RECORD DATA PER 12 RS 74
 - () RECORD AND CALCULATED DATA PER 11 PM 59 OR AS OTHERWISE INDICATED.
- NOTES:**
- THE BASIS OF BEARINGS FOR THIS MAP IS THE SOUTHERLY LINE OF PARCEL 2, SHOWN AS N88°58'17"E IN BOOK 11 OF PARCEL MAPS AT PAGE 59, PLUMAS COUNTY RECORDS.
 - AN EASEMENT EXISTS FOR THE PURPOSES OF ACCESS, INGRESS AND EGRESS WHICH AFFECTS AN UNSPECIFIED LOCATION OF SECTION 5, T.21N., R.13E., M.D.M., RECORDED IN BOOK 459 OF OFFICIAL RECORDS AT PAGE 51, PLUMAS COUNTY RECORDS.

QUARTER CORNER:
 FOUND:
 BT: 19" PINE S 22° E
 10.55' WITH K-TAG,
 "S22E 16 LKS - 7/14/75"
 BT: 18" PINE S 84° W,
 6.32' WITH K-TAG,
 ILLEGIBLE.
 BT: 16" PINE N 06° W,
 34.08' WITH K-TAG,
 "N8W 51 LKS"
 FOUND 3 1/4" BRASS CAP
 STAMPED 1/4, 55 - S4, 1975
 AS NOTED ON 9 RS 54
 MONUMENT SET BY A. M. RAUCH,
 BLM, 1975.

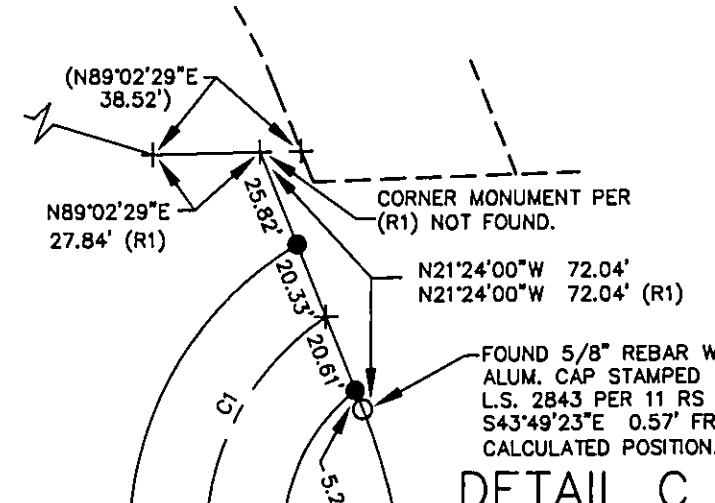
SCALE: 1" = 100'



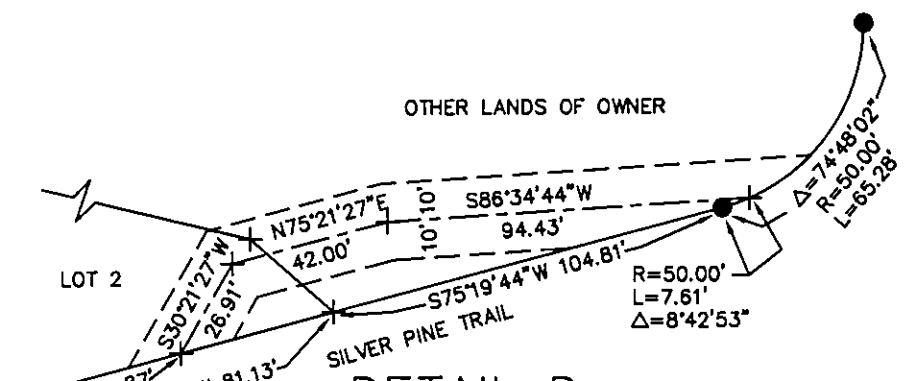
DETAIL A
DRAINAGE EASEMENT
N.T.S.



DETAIL B
SNOW STORAGE EASEMENT
N.T.S.



DETAIL C
ROAD ENTRANCE
N.T.S.



DETAIL D
20.00' WIDE WATER LINE EASEMENT
N.T.S.

CREEKSIDE AT WHITEHAWK RANCH, UNIT 2

A PLANNED DEVELOPMENT FOR EIRINAGREINE L.P. WITHIN A PORTION OF: SECTION 5, T. 21 N., R. 13 E., M.D.M. PLUMAS COUNTY, CALIFORNIA

PREPARED BY:
BASTIAN ENGINEERING
 P.O. BOX 280
 GRAEAGLE, CALIFORNIA 96103
 L.S. 7045

AUGUST 2004

SHEET 2 OF 3