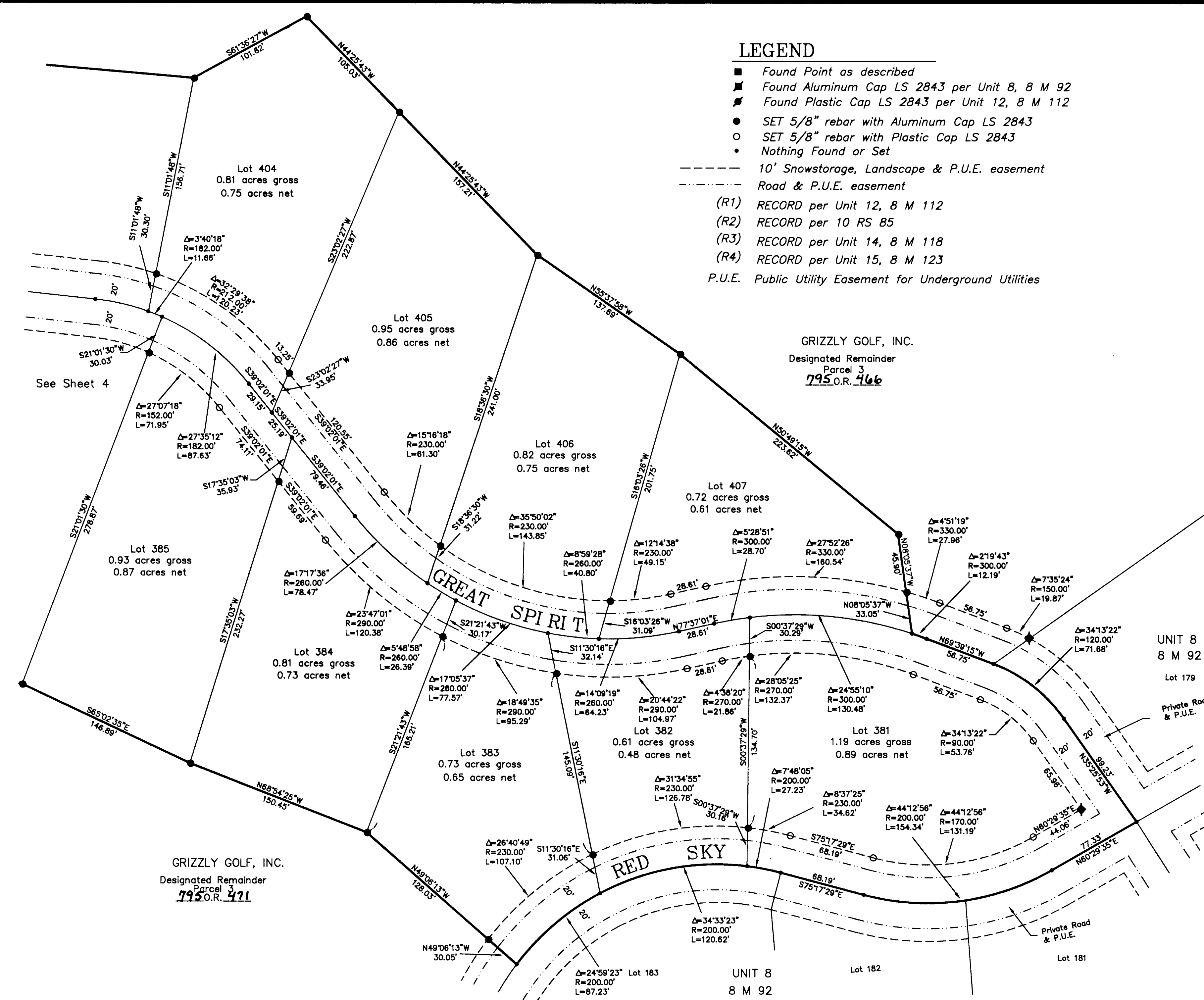


LEGEND

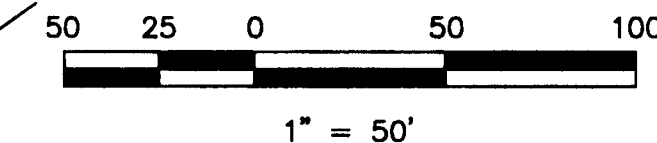
- Found Point as described
- Found Aluminum Cap LS 2843 per Unit 8, 8 M 92
- Found Plastic Cap LS 2843 per Unit 12, 8 M 112
- SET 5/8" rebar with Aluminum Cap LS 2843
- SET 5/8" rebar with Plastic Cap LS 2843
- Nothing Found or Set
- 10' Snowstorage, Landscape & P.U.E. easement
- Road & P.U.E. easement
- (R1) RECORD per Unit 12, 8 M 112
- (R2) RECORD per 10 RS 85
- (R3) RECORD per Unit 14, 8 M 118
- (R4) RECORD per Unit 15, 8 M 123
- P.U.E. Public Utility Easement for Underground Utilities



GRIZZLY GOLF, INC.
Designated Remainder
Parcel 3
795 O.R. 466

GRIZZLY GOLF, INC.
Designated Remainder
Parcel 3
795 O.R. 471

GOLD MOUNTAIN
UNIT 16 "EAGLE FEATHER"
a Planned Development
for
Gold Mountain Ranch, Inc.
A Portion of Section 16
T. 22 N., R. 13 E.; M.D.M.
Plumas County, California
Scale 1" = 50' September, 1999



Hamby Surveying Inc.
P.O. Box 1209
Portola, CA 96122
(530) 832-5571