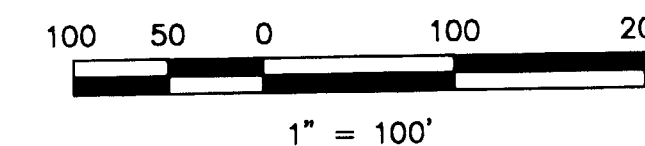


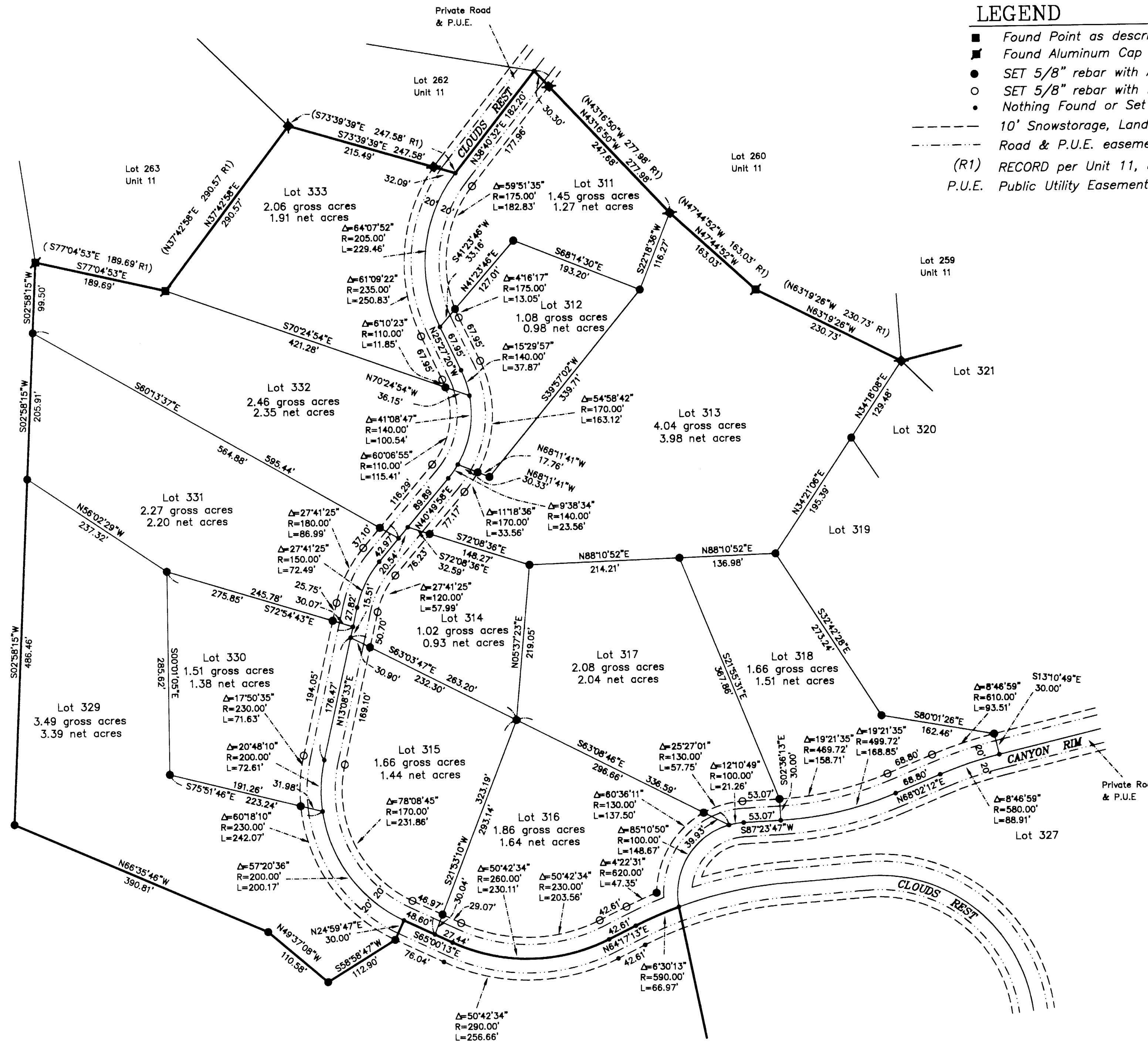
LEGEND

- Found Point as described
- Found Aluminum Cap LS 2843 per Unit 11, 8 M 107
- SET 5/8" rebar with Aluminum Cap LS 2843
- SET 5/8" rebar with Plastic Cap LS 2843
- Nothing Found or Set
- 10' Snowstorage, Landscape & P.U.E. easement
- - - Road & P.U.E. easement
- (R1) RECORD per Unit 11, 8 M 107
- P.U.E. Public Utility Easement for Underground Utilities



BASIS OF BEARINGS

The Basis of Bearings of this map is the Southeasterly line of Lot 263 of Unit 11, shown as N37°42'58"E in Book 8 of Maps at page 107, Plumas County Records.



SHEET 3

**GOLD MOUNTAIN
UNIT 14 "CLOUDS REST"
a Planned Development
for
Gold Mountain Ranch, Inc.
A Portion of Sections 15 & 22
T. 22 N., R 13 E., M.D.M.
Plumas County, California
Scale 1" = 100' February, 1999**

Hamby Surveying Inc.
P.O. Box 1209
Portola, CA 96122
(530) 832-5571

Sheet 2 of 5