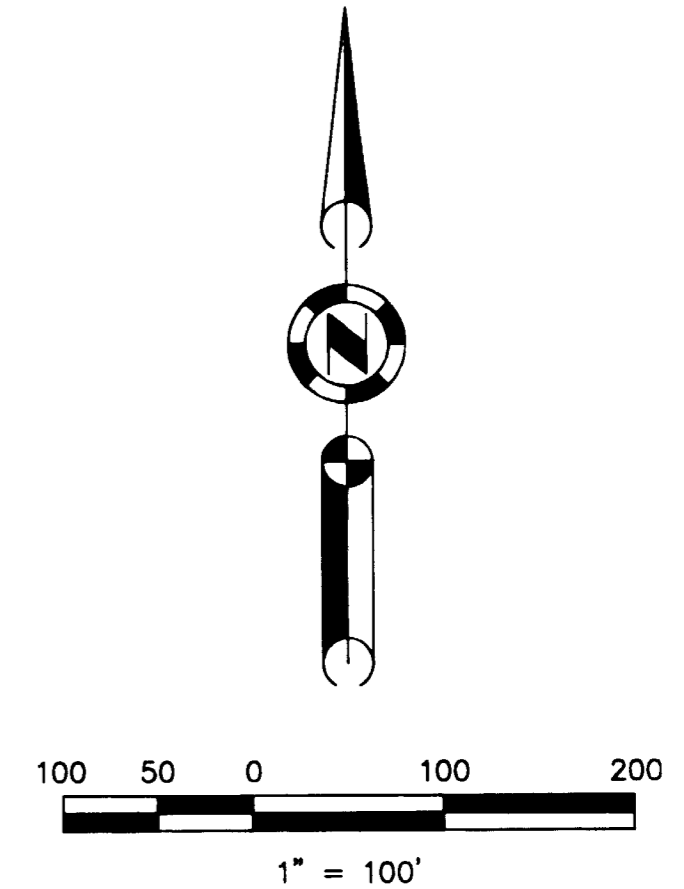


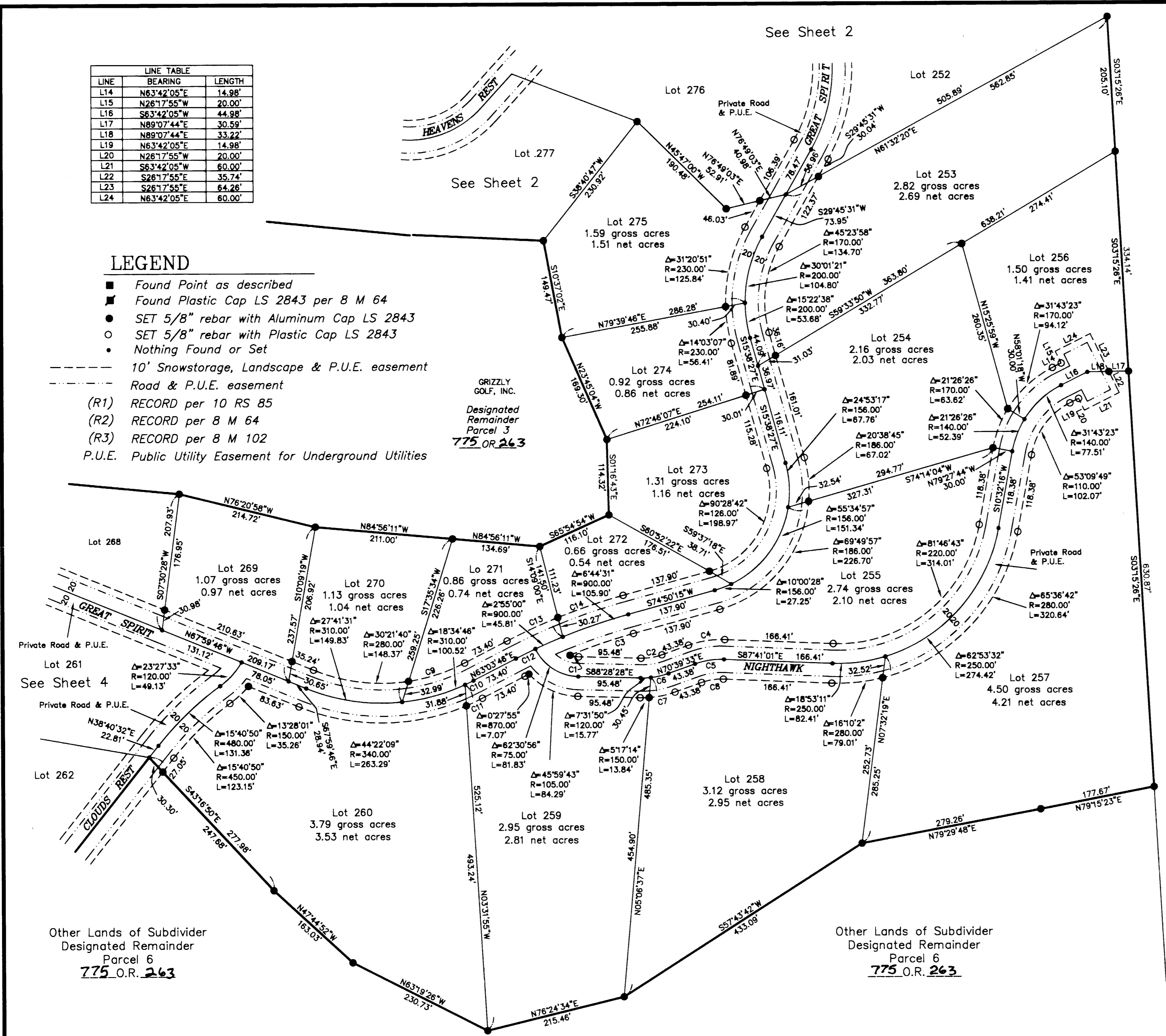
LINE	BEARING	LENGTH
L14	N63°42'05"E	14.98'
L15	N26°17'55"W	20.00'
L16	S63°42'05"W	44.98'
L17	N89°07'44"E	30.59'
L18	N89°07'44"E	33.22'
L19	N63°42'05"E	14.98'
L20	N26°17'55"W	20.00'
L21	S63°42'05"W	60.00'
L22	S26°17'55"E	35.74'
L23	S26°17'55"E	64.26'
L24	N63°42'05"E	60.00'

**LEGEND**

- Found Point as described
- Found Plastic Cap LS 2843 per 8 M 64
- SET 5/8" rebar with Aluminum Cap LS 2843
- SET 5/8" rebar with Plastic Cap LS 2843
- Nothing Found or Set
- 10' Snowstorage, Landscape & P.U.E. easement
- Road & P.U.E. easement
- (R1) RECORD per 10 RS 85
- (R2) RECORD per 8 M 64
- (R3) RECORD per 8 M 102
- P.U.E. Public Utility Easement for Underground Utilities



CURVE	DELTA	RADIUS	LENGTH
C1	171°3'45"	45.00'	13.53'
C2	20°51'58"	90.00'	32.78'
C3	6°45'42"	870.00'	102.67'
C4	21°39'26"	150.00'	56.70'
C5	21°39'26"	120.00'	45.36'
C6	13°20'08"	120.00'	27.93'
C7	15°34'44"	150.00'	40.79'
C8	21°39'26"	90.00'	34.02'
C9	18°34'49"	280.00'	90.80'
C10	2°40'12"	310.00'	14.45'
C11	4°34'20"	340.00'	27.13'
C12	2°06'59"	900.00'	33.24'
C13	5°17'04"	930.00'	85.78'
C14	6°29'25"	930.00'	105.35'



**GOLD MOUNTAIN  
UNIT 11 "NIGHTHAWK"**  
a Planned Development  
for  
Gold Mountain Ranch, Inc.  
A Portion of Section 15  
T. 22 N., R 13 E., M.D.M.  
Plumas County, California  
Scale 1" = 100' February, 1999

Hamby Surveying Inc.  
P.O. Box 1209  
Portola, CA 96122  
(530) 832-5571