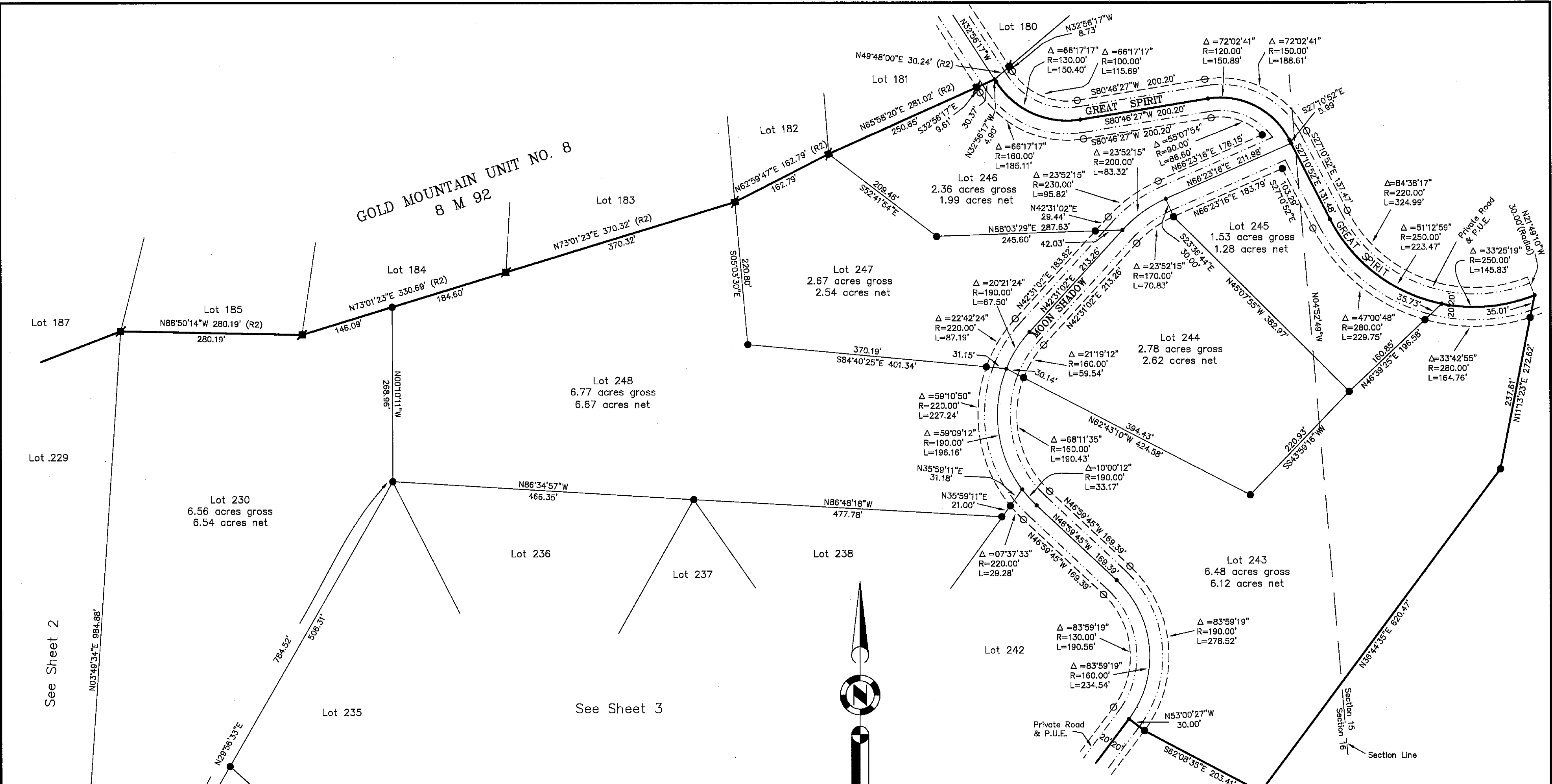
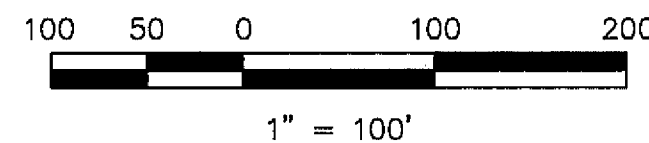


GOLD MOUNTAIN UNIT NO. 8
8 M 92



LEGEND

- Found Point as described
- Found Aluminum Cap LS 2843 per 8 M 78
- SET 5/8" rebar with Aluminum Cap LS 2843
- SET 5/8" rebar with Plastic Cap LS 2843
- Nothing Found or Set
- 10' Snowstorage, Landscape & P.U.E. easement
- - - Road & P.U.E. easement
- (R1) RECORD per 8 m 78
- (R2) RECORD per 8 M 92
- P.U.E. Public Utility Easement for Underground Utilities



GOLD MOUNTAIN
UNIT 10 "STARTOP"
a Planned Development
for
Gold Mountain Ranch, Inc.
A Portion of Sections 15 & 16
T. 22 N., R 13 E., M.D.M.
Plumas County, California
Scale 1" = 100' December, 1998

Hamby Surveying Inc.
P.O. Box 1209
Portola, CA 96122
(530) 832-5571