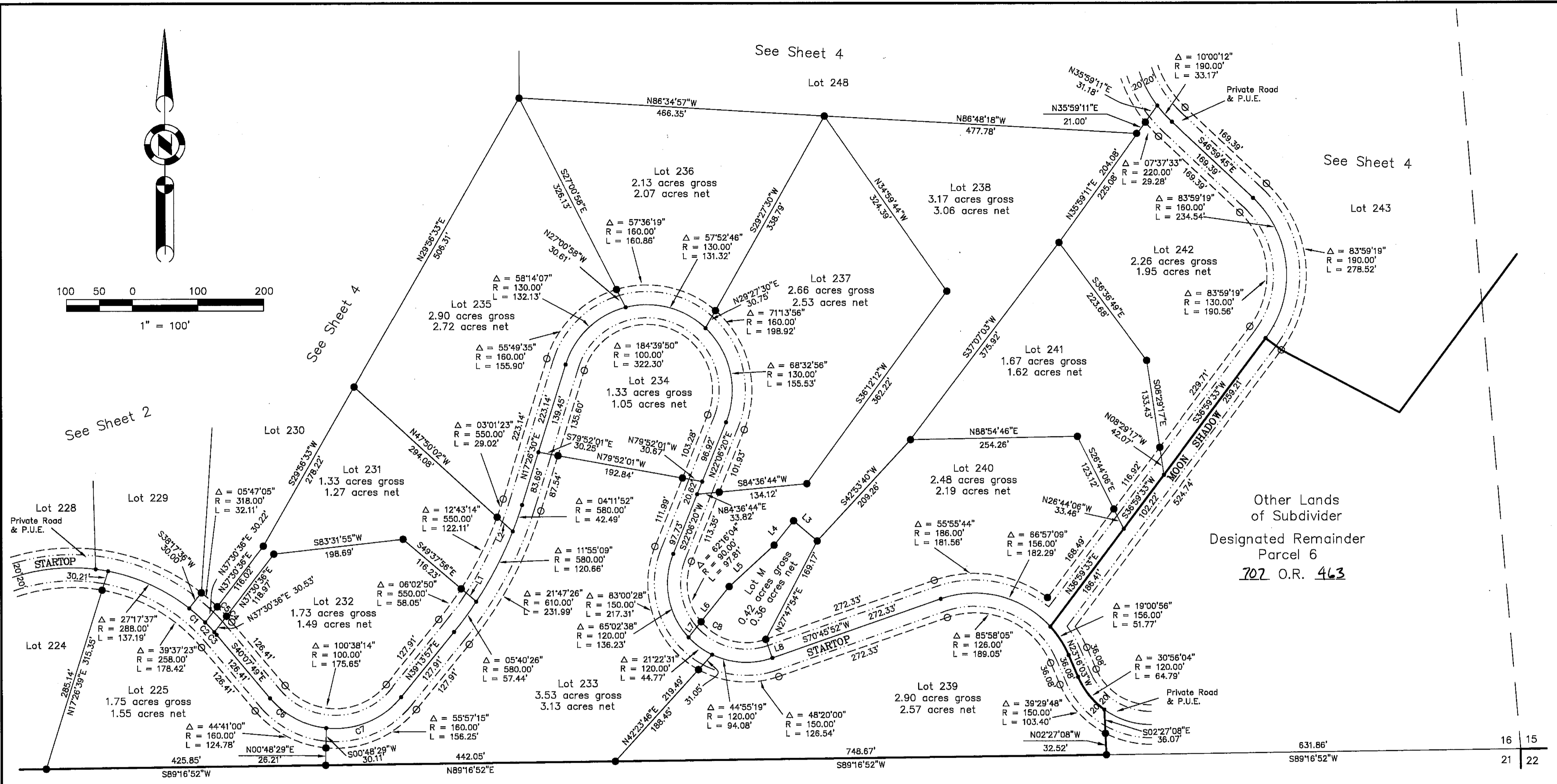
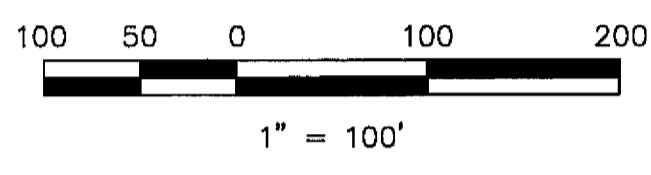


See Sheet 4



Other Lands of Subdivider  
Designated Remainder  
Parcel 6  
707 O.R. 463

**LEGEND**

- Found Point as described
- Found Aluminum Cap LS 2843 per 8 M 78 & 8 M 92
- SET 5/8" rebar with Aluminum Cap LS 2843
- SET 5/8" rebar with Plastic Cap LS 2843
- Nothing Found or Set
- 10' Snowstorage, Landscape & P.U.E. easement
- Road & P.U.E. easement
- (R1) RECORD per 10 RS 83
- (R2) RECORD per 8 M 78
- P.U.E. Public Utility Easement for Underground Utilities

CURVE	RADIUS	LENGTH	DELTA
C1	288.00'	32.53'	06°28'21"
C2	288.00'	20.27'	04°01'56"
C3	288.00'	5.39'	01°04'18"
C4	318.00'	11.93'	02°08'55"
C5	318.00'	20.22'	03°38'35"
C6	130.00'	99.08'	43°40'12"
C7	130.00'	129.25'	56°58'02"
C8	90.00'	108.50'	69°04'24"

LINE	DIRECTION	DISTANCE
L1	N49°37'56"W	30.22'
L2	N47°50'02"W	32.16'
L3	S49°45'25"E	47.40'
L4	N38°44'41"E	47.43'
L5	N47°24'31"E	93.09'
L6	N38°49'24"E	68.47'
L7	S38°49'24"W	30.42'
L8	N19°14'08"W	30.00'

**GOLD MOUNTAIN  
UNIT 10 "STARTOP"**  
a Planned Development  
for  
Gold Mountain Ranch, Inc.  
A Portion of Sections 15 & 16  
T. 22 N., R 13 E., M.D.M.  
Plumas County, California  
Scale 1" = 100' December, 1998

Hamby Surveying Inc.  
P.O. Box 1209  
Portola, CA 96122  
(530) 832-5571