

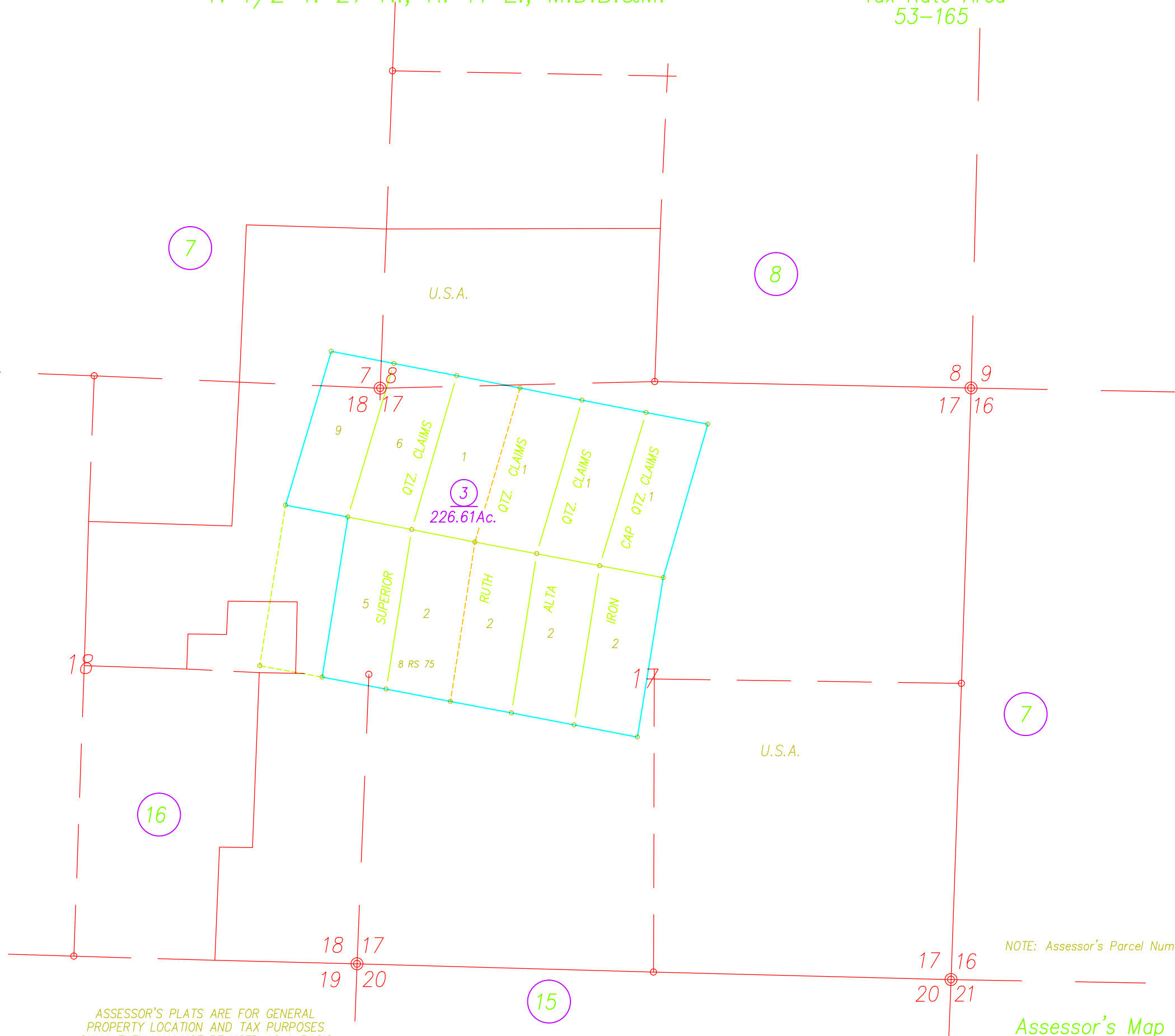
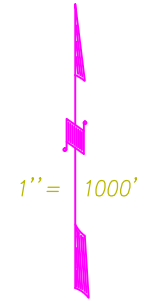
N 1/2 T. 27 N., R. 11 E., M.D.B.&M.

Tax Rate Area  
53-165

7-09

COLOR	LAYER
160	SECTIONS AND BLOCKS
150	UTILITIES
140	AIRPORT
130	STRUCTURE, "HOUSE"
120	RAILROADS, GLO TRAVERSE
110	ASSESSOR'S PARCEL NUMBER, TOWNSHIP, CITY LIMITS, COUNTY LINES
100	FLOOD SURVEY
90	SUBDIVISIONAL TRACT LINES
80	WATER
70	ASSESSOR'S PARCEL PROPERTY LINES
60	ADJACENT PARCEL, PAGE OR BOOK REFERENCE
50	HIWAYS, STREETS, ROADS AND TEXT
40	GOLF COURSE
30	MINERAL SURVEYS, PATENTS, RIGHTS
20	LOT & PARCEL DESIGNATORS, TICK MARKS AND TEXT
10	ALTERED PARCEL LINES AND BRIDGES
0	MOUNTAIN LOCATION
0	FENCE LINE
0	TAX RATE AREA
0	DIMENSIONAL TEXT

DRAWN BY GREGORY WITHROW



ASSESSOR'S PLATS ARE FOR GENERAL  
PROPERTY LOCATION AND TAX PURPOSES  
ONLY. THEY MAY NOT BE USED AS A BASIS  
FOR LEGAL PROPERTY DESCRIPTIONS.

Assessor's Map Bk.7, Pg.09  
County of Plumas, Calif.