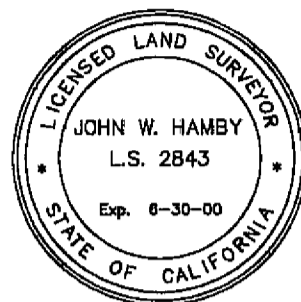


SURVEYOR'S STATEMENT

THIS MAP AND THE SURVEY PERFORMED THEREFOR IN JULY, 1998, WERE MADE BY ME OR UNDER MY DIRECTION. THE SURVEY IS TRUE AND COMPLETE AS SHOWN. ALL OF THE MONUMENTS SHOWN HEREON ARE OF THE CHARACTER AND OCCUPY THE POSITIONS INDICATED AND ARE SUFFICIENT TO ENABLE THE SURVEY TO BE RETRACED.



DATED: 8-7-98

John W. Hamby, JOHN W. HAMBY L.S. 2843

COUNTY SURVEYOR'S STATEMENT

I HAVE EXAMINED THIS MAP AND FIND IT IS SUBSTANTIALLY THE SAME AS IT APPEARED ON THE TENTATIVE MAP AND ANY APPROVED ALTERATIONS THEREOF. ALL PROVISIONS OF THE SUBDIVISION MAP ACT AND ANY LOCAL ORDINANCES APPLICABLE AT THE TIME OF APPROVAL OF THE TENTATIVE MAP HAVE BEEN COMPLIED WITH, AND I AM SATISFIED THAT THE MAP IS TECHNICALLY CORRECT.

DATED 8/18/98

R. Tom Hunter, R. TOM HUNTER R.C.E.30515, Plumas County Surveyor, License Exp. Date 3-31-00

COUNTY TAX COLLECTOR'S CERTIFICATE

I, BARBARA J. COATES, TAX COLLECTOR OF THE COUNTY OF PLUMAS, STATE OF CALIFORNIA, DO HEREBY CERTIFY THEY THERE ARE NO TAX LIENS AGAINST THE LOTS AS SHOWN HEREON FOR UNPAID STATE, COUNTY, MUNICIPAL OR LOCAL TAXES OR SPECIAL ASSESSMENTS COLLECTED AS TAXES, EXCEPT TAXES OR ASSESSMENTS NOT YET PAYABLE. TAXES OR ASSESSMENTS WHICH ARE A LIEN BUT NOT YET PAYABLE ARE ESTIMATED TO BE IN THE AMOUNT OF _____.

DATED: 8/18/98

Barbara J. Coates, Deputy, BARBARA J. COATES, PLUMAS COUNTY TAX COLLECTOR

TRUSTEE'S CERTIFICATE

CAL-SIERRA TITLE COMPANY, AS TRUSTEE UNDER A DEED OF TRUST DATED APRIL 19, 1995, AND RECORDED IN BOOK 653 OF OFFICIAL RECORDS AT PAGE 563, DOES HEREBY CONSENT TO THE PREPARATION AND RECORDING OF THIS MAP.

CAL - SIERRA TITLE COMPANY

DATED: Aug. 14, 1998

David O. Windle, DAVID O. WINDLE, PRESIDENT

State of CALIFORNIA } County of PLUMAS }

On August 14, 1998 before me, Crystal C. Cliff, Notary Public, personally appeared DAVID O. WINDLE

personally known to me - OR - proved to me on the basis of satisfactory evidence to be the person whose name is subscribed to the within instrument and acknowledged to me that he executed the same in his authorized capacity, and that by his signature on the instrument the person or the entity upon behalf of which the person acted, executed the instrument.

My Commission expires Feb 27, 2002

WITNESS my hand and official seal. Crystal C. Cliff, comm # 1174831

COUNTY BOARD CLERK'S CERTIFICATE

I, NANCY DAFORNO, CLERK TO THE PLUMAS COUNTY BOARD OF SUPERVISORS, HEREBY CERTIFY THAT THE HEREIN EMBODIED MAP WAS APPROVED BY SAID BOARD OF SUPERVISORS CONVENEED IN A REGULAR MEETING UPON THE 18 DAY OF August, 1998.

DATED: Aug. 19, 1998

Carol L. Barber, Deputy, NANCY DAFORNO, CLERK TO THE BOARD OF SUPERVISORS

OWNER'S STATEMENT

GOLD MOUNTAIN RANCH, INC., A CALIFORNIA CORPORATION, HAVING RECORD TITLE INTEREST IN THE HEREIN SUBDIVIDED LANDS, DOES HEREBY CONSENT TO THE PREPARATION AND RECORDATION OF THIS MAP.

RED SKY, DREAM MAKER, GREAT SPIRIT AND THE 10' SNOW STORAGE AND PUBLIC UTILITY EASEMENTS AS SHOWN ON THE MAP WERE OFFERED FOR DEDICATION ON PREVIOUS MAPS AS PUBLIC UTILITY EASEMENTS FOR UNDERGROUND UTILITIES, AND AS ACCESS FOR MAINTENANCE THEREOF AND HAVE BEEN GRANTED TO THE GOLD MOUNTAIN HOMEOWNERS ASSOCIATION AS PRIVATE ROAD AND PUBLIC UTILITY EASEMENTS FOR COMMON USE OF THE OWNERS OF GOLD MOUNTAIN PLANNED DEVELOPMENT.

SAID PRIVATE ROADS WILL BE MAINTAINED BY THE GOLD MOUNTAIN HOMEOWNERS ASSOCIATION.

THE 20' PUBLIC UTILITY EASEMENT AS SHOWN ON THIS MAP IS HEREBY OFFERED FOR DEDICATION AS PUBLIC UTILITY EASEMENT FOR UNDERGROUND UTILITIES, AND AS ACCESS FOR MAINTENANCE THEREOF AND WILL BE GRANTED TO THE GOLD MOUNTAIN HOMEOWNERS ASSOCIATION AS PUBLIC UTILITY EASEMENT FOR COMMON USE OF THE OWNERS OF GOLD MOUNTAIN PLANNED DEVELOPMENT.

GOLD MOUNTAIN RANCH, INC.

DARIEL D. GARNER, President

MARGARET M. GARNER, Secretary

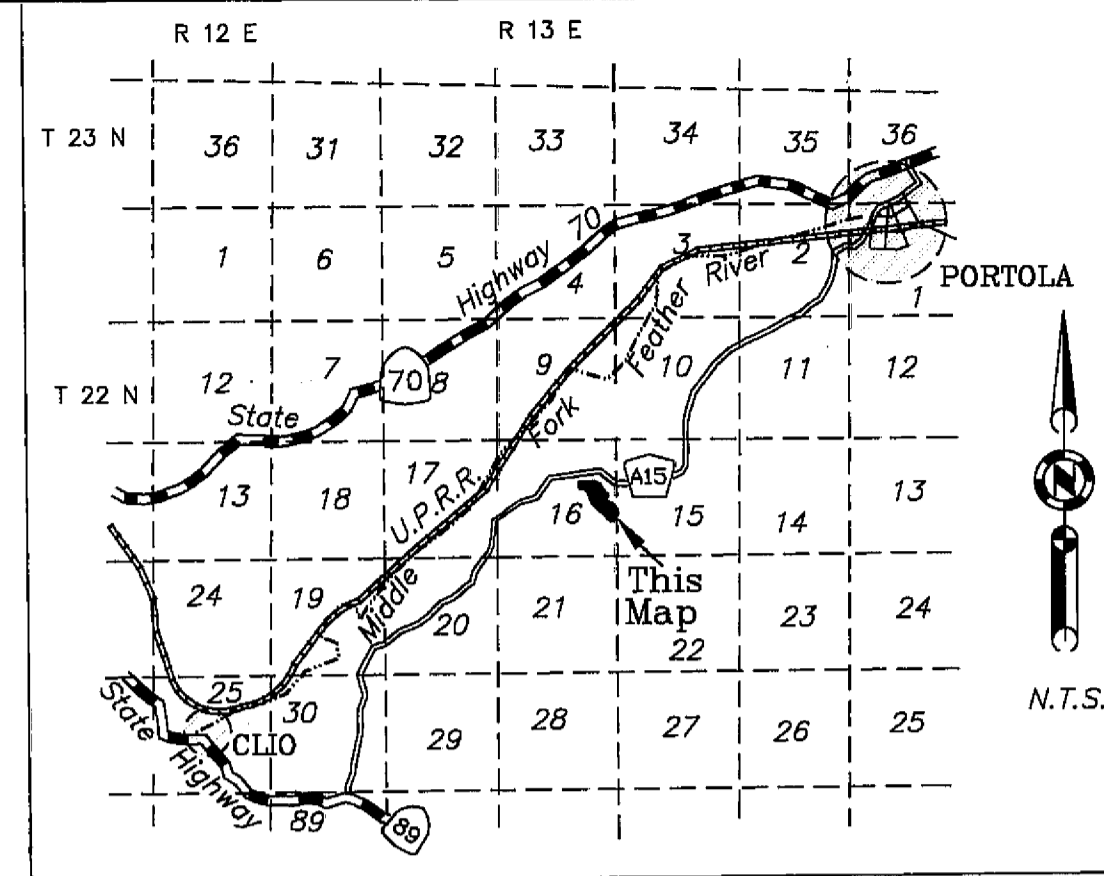
State of California } County of Plumas }

On August 10, 1998 before me, Paullette Thomas, Notary Public, personally appeared DARIEL D. GARNER and MARGARET M. GARNER,

personally known to me - OR - proved to me on the basis of satisfactory evidence to be the persons whose names are subscribed to the within instrument and acknowledged to me that they executed the same in their authorized capacities, and that by their signatures on the instrument the persons or the entity upon behalf of which the persons acted, executed the instrument.

My Commission expires July 3, 2000

WITNESS my hand and official seal. Paullette Thomas, Comm. # 1104694



LOCATION MAP

AREA TABULATION

17.90 net acres in Lots, 1.87 acres in road easements, 19.77 acres total

COUNTY RECORDER'S CERTIFICATE

FILED THIS 19th DAY OF August 1998, AT 2:50 P.M. IN BOOK 8 OF MAPS AT PAGE 96-98 AT THE REQUEST OF THE COUNTY SURVEYOR.

FEE \$ 12.00

JUDITH WELLS, County Recorder

FILE NO. 6428

By Thomas R. Crawford, DEPUTY

GOLD MOUNTAIN UNIT 9 "GREAT SPIRIT" a Planned Development for Gold Mountain Ranch, Inc.

A Portion of Section 16 T. 22 N., R 13 E., M.D.M. Plumas County, California Scale 1" = 100' July, 1998

Hamby Surveying Inc. P.O. Box 1209, Portola, CA 96122 (530) 832-5571