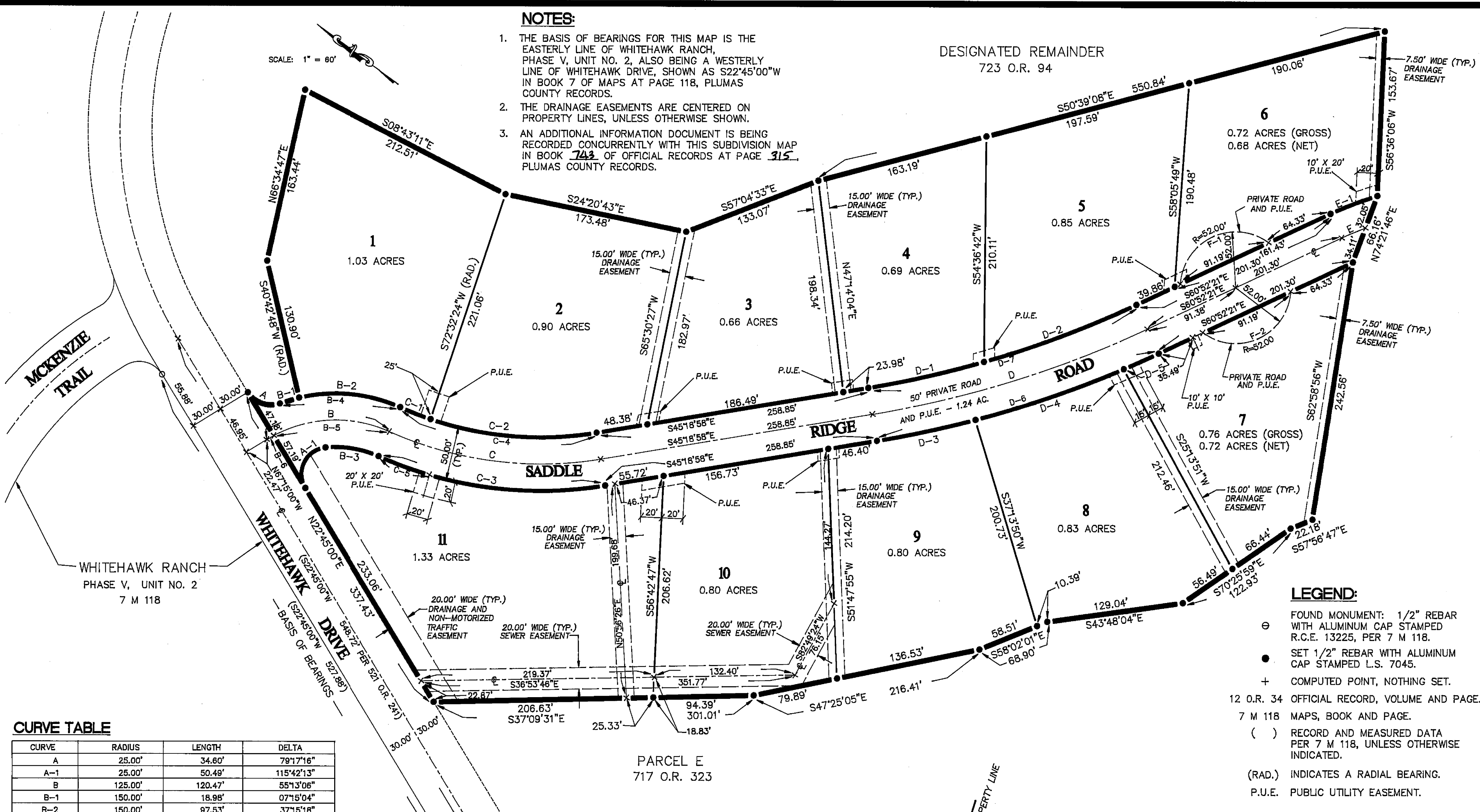


NOTES:

1. THE BASIS OF BEARINGS FOR THIS MAP IS THE EASTERLY LINE OF WHITEHAWK RANCH, PHASE V, UNIT NO. 2, ALSO BEING A WESTERLY LINE OF WHITEHAWK DRIVE, SHOWN AS S22°45'00"W IN BOOK 7 OF MAPS AT PAGE 118, PLUMAS COUNTY RECORDS.
2. THE DRAINAGE EASEMENTS ARE CENTERED ON PROPERTY LINES, UNLESS OTHERWISE SHOWN.
3. AN ADDITIONAL INFORMATION DOCUMENT IS BEING RECORDED CONCURRENTLY WITH THIS SUBDIVISION MAP IN BOOK 743 OF OFFICIAL RECORDS AT PAGE 315, PLUMAS COUNTY RECORDS.

SCALE: 1" = 80'

DESIGNATED REMAINDER
723 O.R. 94



LEGEND:

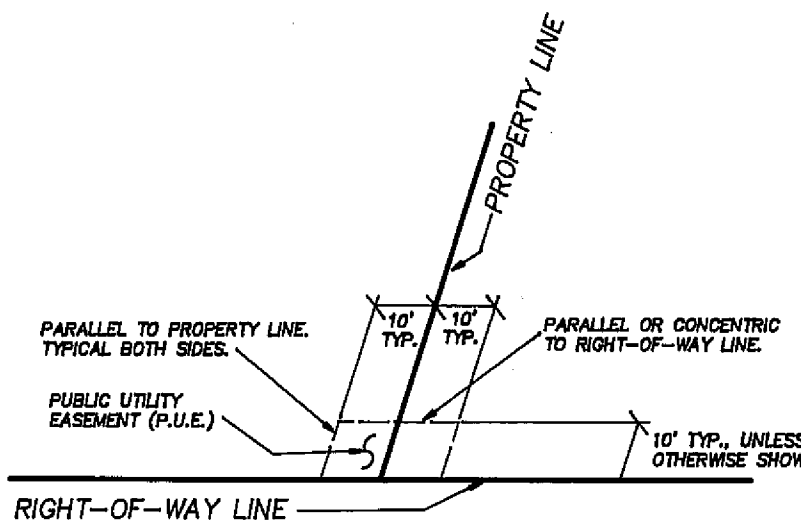
- ⊙ FOUND MONUMENT: 1/2" REBAR WITH ALUMINUM CAP STAMPED R.C.E. 13225, PER 7 M 118.
- SET 1/2" REBAR WITH ALUMINUM CAP STAMPED L.S. 7045.
- + COMPUTED POINT, NOTHING SET.
- 12 O.R. 34 OFFICIAL RECORD, VOLUME AND PAGE.
- 7 M 118 MAPS, BOOK AND PAGE.
- () RECORD AND MEASURED DATA PER 7 M 118, UNLESS OTHERWISE INDICATED.
- (RAD.) INDICATES A RADIAL BEARING.
- P.U.E. PUBLIC UTILITY EASEMENT.

CURVE TABLE

CURVE	RADIUS	LENGTH	DELTA
A	25.00'	34.60'	79°17'16"
A-1	25.00'	50.49'	115°42'13"
B	125.00'	120.47'	55°13'06"
B-1	150.00'	18.98'	07°15'04"
B-2	150.00'	97.53'	37°15'18"
B-3	100.00'	51.51'	29°30'53"
B-4	150.00'	116.52'	44°30'22"
B-5	125.00'	112.93'	51°45'55"
B-6	125.00'	7.53'	03°27'11"
C	350.00'	203.32'	33°17'04"
C-1	325.00'	30.79'	05°25'42"
C-2	325.00'	158.01'	27°51'22"
C-3	375.00'	217.85'	33°17'04"
C-4	325.00'	188.80'	33°17'04"
C-5	375.00'	51.00'	07°47'33"
D	1000.00'	271.51'	15°33'23"
D-1	975.00'	111.35'	06°32'37"
D-2	975.00'	153.37'	09°00'46"
D-3	1025.00'	94.67'	05°17'31"
D-4	1025.00'	147.66'	08°15'19"
D-5	1025.00'	35.95'	02°00'33"

PARCEL E
717 O.R. 323

CURVE	RADIUS	LENGTH	DELTA
D-6	1025.00'	278.30'	15°33'23"
D-7	975.00'	264.72'	15°33'23"
E	300.00'	24.25'	04°37'50"
E-1	325.00'	47.14'	08°18'36"
F-1	52.00'	111.20'	122°31'43"
F-2	52.00'	111.20'	122°31'43"



TYPICAL DETAIL
PUBLIC UTILITY EASEMENT (P.U.E.)
(TYPICAL AT LOCATIONS SHOWN, EXCEPT WHERE OTHERWISE INDICATED)

**WHITEHAWK RANCH
PHASE IX - UNIT 1**

A PLANNED DEVELOPMENT
FOR
MOHAWK VALLEY RANCH, INC.

WITHIN A PORTION OF SECTION 5, T.21N., R.13E., M.D.M.
PLUMAS COUNTY, CALIFORNIA
PREPARED BY:
BASTIAN ENGINEERING
P.O. BOX 280
GRAEAGLE, CALIFORNIA 95103
L.S. 7045