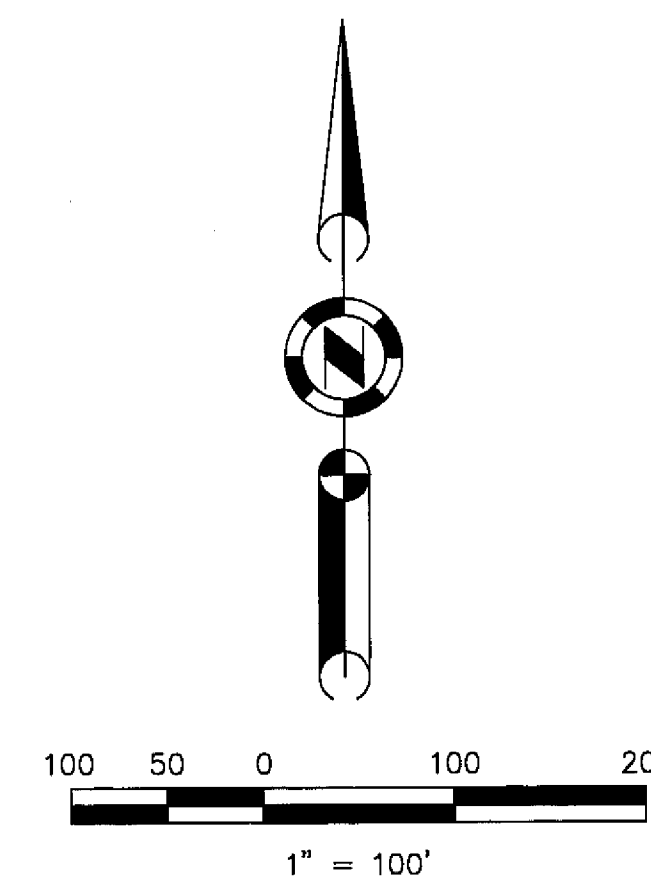


Gold Mountain Subdivision  
Unit 5 "Dancing Bears"  
8 M 64

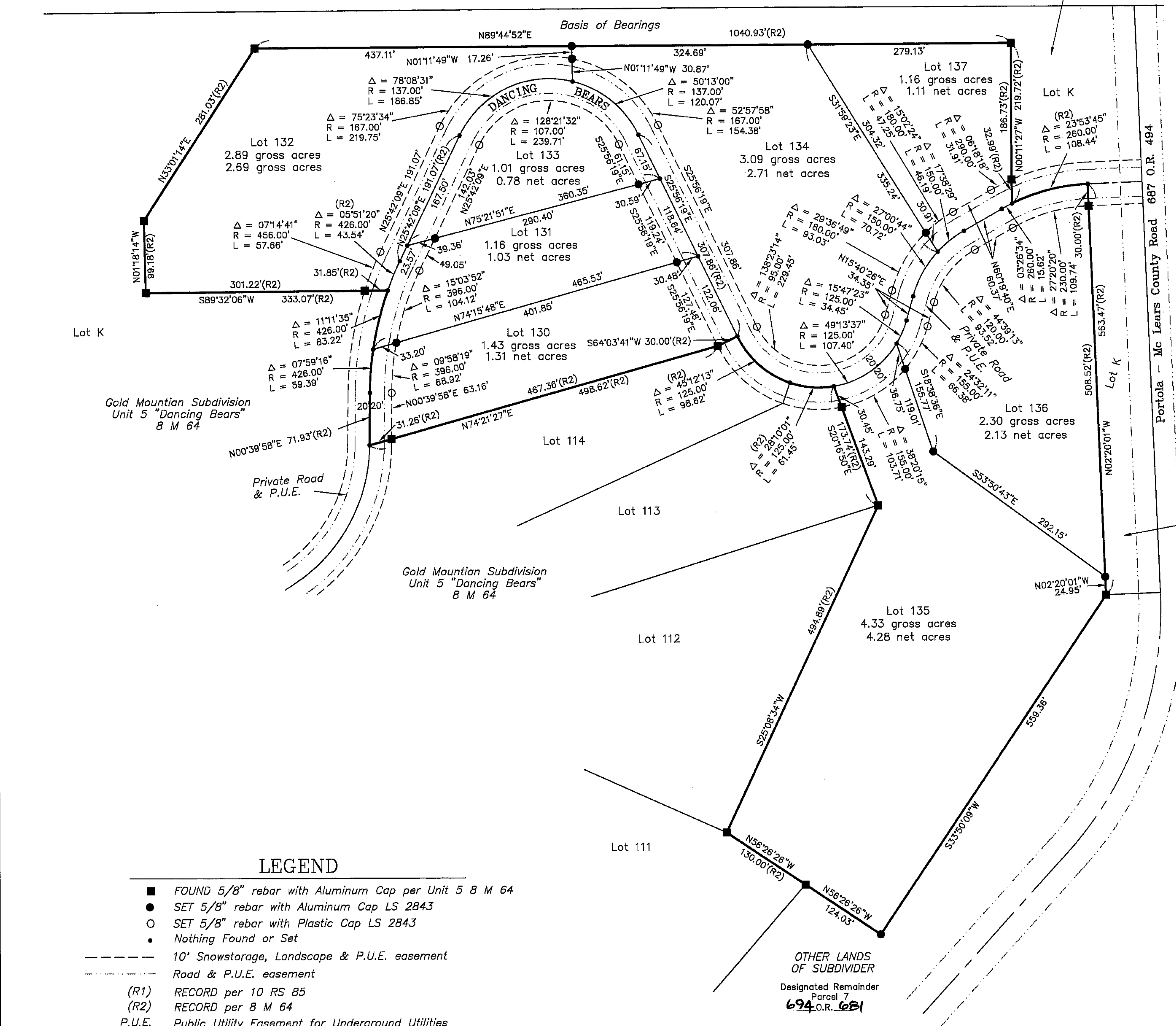
Basis of Bearings

The Basis of Bearings of this map is that line of Lot K as found monumented, which is shown as N89°44'52"E, 1040.93' in Book 8 of Maps at page 64, Plumas County records.

OTHER LANDS  
OF SUBDIVIDER  
Designated Remainder  
Parcel 7  
694 O.R. 681



Gold Mountain Subdivision  
Unit 5 "Dancing Bears"  
8 M 64



LEGEND

- FOUND 5/8" rebar with Aluminum Cap per Unit 5 8 M 64
- SET 5/8" rebar with Aluminum Cap LS 2843
- SET 5/8" rebar with Plastic Cap LS 2843
- Nothing Found or Set
- 10' Snowstorage, Landscape & P.U.E. easement
- Road & P.U.E. easement
- (R1) RECORD per 10 RS 85
- (R2) RECORD per 8 M 64
- P.U.E. Public Utility Easement for Underground Utilities

GOLD MOUNTAIN  
UNIT 6 "CLOUD PAINTER"  
a Planned Development  
for  
Gold Mountain Ranch, Inc.  
A Portion of Section 15 & 16  
T. 22 N., R 13 E., M.D.M.  
Plumas County, California  
Scale 1" = 100' April, 1997

Hamby Surveying Inc.  
P.O. Box 1209  
Portola, CA 96122  
(916) 832-5571