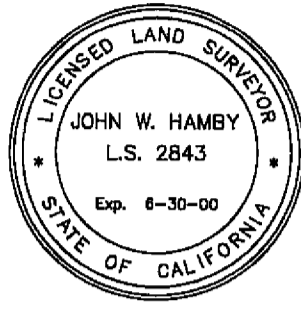


SURVEYOR'S STATEMENT

THIS MAP AND THE SURVEY PERFORMED THEREFOR IN OCTOBER, 1997, WERE MADE BY ME OR UNDER MY DIRECTION. THE SURVEY IS TRUE AND COMPLETE AS SHOWN. ALL OF THE MONUMENTS SHOWN HEREON ARE OF THE CHARACTER AND OCCUPY THE POSITIONS INDICATED AND ARE SUFFICIENT TO ENABLE THE SURVEY TO BE RETRACED.



DATED: 12-24-97  
John W. Hamby  
JOHN W. HAMBY L.S.2843

COUNTY SURVEYOR'S STATEMENT

I HAVE EXAMINED THIS MAP AND FIND IT IS SUBSTANTIALLY THE SAME AS IT APPEARED ON THE TENTATIVE MAP AND ANY APPROVED ALTERATIONS THEREOF. ALL PROVISIONS OF THE SUBDIVISION MAP ACT AND ANY LOCAL ORDINANCES APPLICABLE AT THE TIME OF APPROVAL OF THE TENTATIVE MAP HAVE BEEN COMPLIED WITH, AND I AM SATISFIED THAT THE MAP IS TECHNICALLY CORRECT.

DATED 4/20/98  
R. Tom Hunter  
R. TOM HUNTER R.C.E.30515  
Plumas County Surveyor  
License Exp. Date 3-31-00

COUNTY TAX COLLECTOR'S CERTIFICATE

I, BARBARA J. COATES, TAX COLLECTOR OF THE COUNTY OF PLUMAS, STATE OF CALIFORNIA, DO HEREBY CERTIFY THEY THERE ARE NO TAX LIENS AGAINST THE LOTS AS SHOWN HEREON FOR UNPAID STATE, COUNTY, MUNICIPAL OR LOCAL TAXES OR SPECIAL ASSESSMENTS COLLECTED AS TAXES, EXCEPT TAXES OR ASSESSMENTS NOT YET PAYABLE. TAXES OR ASSESSMENTS WHICH ARE A LIEN BUT NOT YET PAYABLE ARE ESTIMATED TO BE IN THE AMOUNT OF 461.00

DATED: 1/23/98  
Barbara J. Coates  
BARBARA J. COATES  
PLUMAS COUNTY TAX COLLECTOR

TRUSTEE'S CERTIFICATE

CAL-SIERRA TITLE COMPANY, AS TRUSTEE UNDER A DEED OF TRUST DATED APRIL 19, 1995, AND RECORDED IN BOOK 653 OF OFFICIAL RECORDS AT PAGE 563, DOES HEREBY CONSENT TO THE PREPARATION AND RECORDING OF THIS MAP.

DATED: JAN. 14, 1998  
By David O. Windle  
DAVID O. WINDLE  
PRESIDENT

State of CALIFORNIA }  
County of PLUMAS }  
On 1/14/98 before me, ALICIA DALTON  
personally appeared DAVID O. WINDLE

personally known to me - OR -  proved to me on the basis of satisfactory evidence to be the person whose name is subscribed to the within instrument and acknowledged to me that he executed the same in his authorized capacity, and that by his signature on the instrument the person or the entity upon behalf of which the person acted, executed the instrument.

My Commission expires 12-22-00  
WITNESS my hand and official seal  
Alicia Dalton  
Commission # 1120575

COUNTY BOARD CLERK'S CERTIFICATE

I, Nancy DaForno, Clerk to the Plumas County Board of Supervisors, hereby certify that the herein embodied map was approved by said board of supervisors convened in a regular meeting upon the 21st day of April, 1998. The offer of dedication for easements as shown on the map were accepted for the uses noted.

DATED: 4/21/98  
Nancy DaForno  
Nancy DaForno  
Clerk to the Board of Supervisors

OWNER'S STATEMENT

GOLD MOUNTAIN RANCH, INC., A CALIFORNIA CORPORATION, HAVING RECORD TITLE INTEREST IN THE HEREIN SUBDIVIDED LANDS, DO HEREBY CONSENT TO THE PREPARATION AND RECORDATION OF THIS MAP.

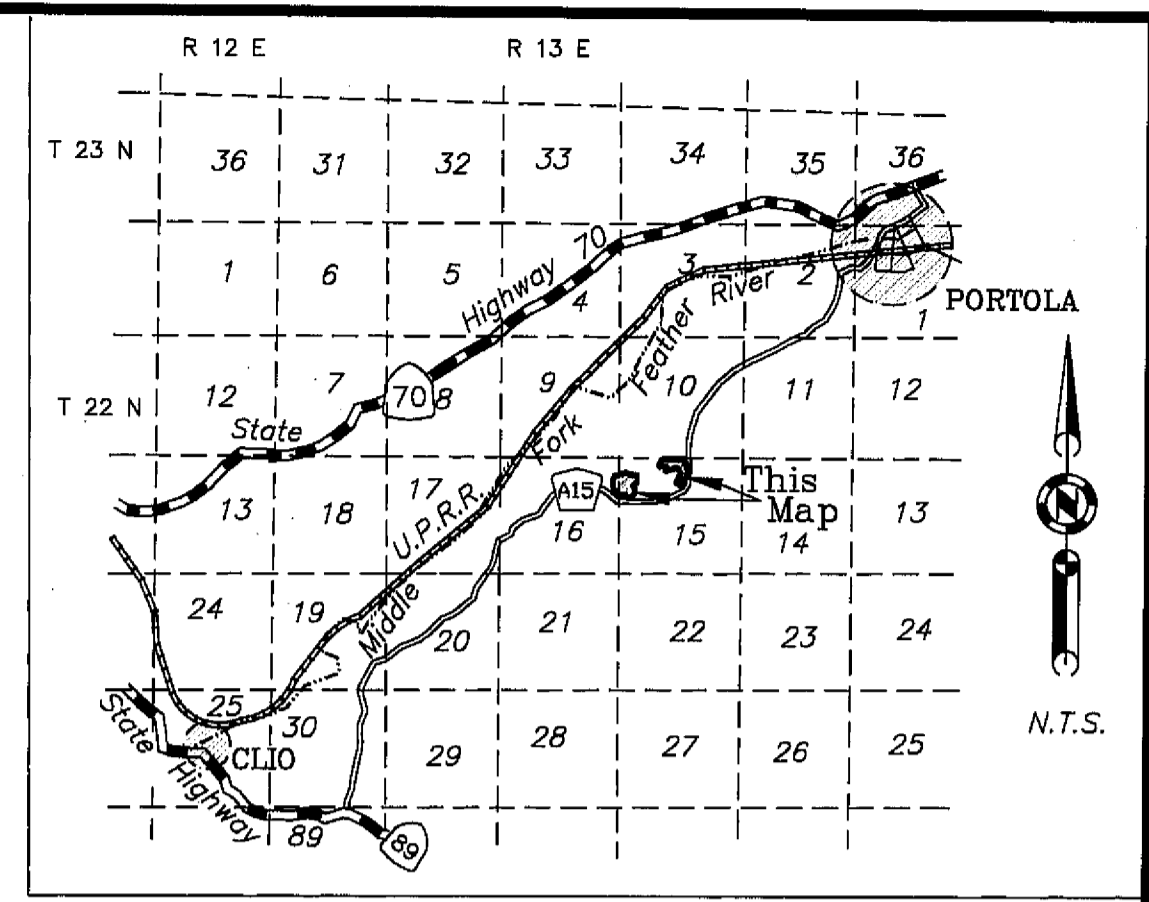
CLOUD PAINTER, DANCING BEARS, AND THE 10' SNOW STORAGE, LANDSCAPE AND P.U.E. EASEMENTS AS SHOWN ON THE MAP ARE HEREBY OFFERED FOR DEDICATION AS PUBLIC UTILITY EASEMENTS FOR UNDERGROUND UTILITIES, AND AS ACCESS FOR MAINTENANCE THEREOF AND WILL BE GRANTED TO THE GOLD MOUNTAIN HOMEOWNERS ASSOCIATION AS PRIVATE ROADS AND P.U.E.S FOR COMMON USE OF THE OWNERS OF GOLD MOUNTAIN PLANNED DEVELOPMENT. SAID PRIVATE ROADS WILL BE MAINTAINED BY THE GOLD MOUNTAIN HOMEOWNERS ASSOCIATION.

GOLD MOUNTAIN RANCH, INC.  
by Daryl D. Garner 1/7/98  
DARIEL D. GARNER, President  
by Margaret M. Garner 1/7/98  
MARGARET M. GARNER, Secretary

State of California }  
County of Plumas }  
On January 7, 1998 before me, Alicia Dalton  
personally appeared DARIEL D. GARNER and MARGARET M. GARNER,

personally known to me - OR -  proved to me on the basis of satisfactory evidence to be the persons whose names are subscribed to the within instrument and acknowledged to me that they executed the same in their authorized capacities, and that by their signatures on the instrument the persons or the entity upon behalf of which the persons acted, executed the instrument.

My Commission expires 12-22-00  
WITNESS my hand and official seal  
Alicia Dalton  
Commission # 1120575



LOCATION MAP

AREA TABULATION

37.14 AC. IN LOTS  
2.33 AC. IN ROAD EASEMENTS  
39.47 AC. TOTAL

COUNTY RECORDER'S CERTIFICATE

FILED THIS 22nd DAY OF APRIL, 1998, AT 2:49 P.M. IN BOOK 6 OF MAPS AT PAGE 74 AT THE REQUEST OF THE COUNTY SURVEYOR.

FEE 1400  
FILE NO. 2862  
JUDITH WELLS, County Recorder  
By Jo Ann Van Miller  
DEPUTY

GOLD MOUNTAIN  
UNIT 6 "CLOUD PAINTER"  
a Planned Development  
for  
Gold Mountain Ranch, Inc.

A Portion of Section 15 & 16  
T. 22 N., R 13 E., M.D.M.  
Plumas County, California  
Scale 1" = 100' October, 1997

Hamby Surveying Inc.  
P.O. Box 1209  
Portola, CA 96122  
(916) 832-5571