

LEGEND

- FOUND 1/2" REBAR WITH ALUMINUM CAP STAMPED RCE 13225 PER 7 M 80 UNLESS OTHERWISE NOTED.
- SET 1/2" REBAR WITH ALUMINUM CAP STAMPED LS 7045.
- + CALCULATED CORNER POSITION. NOTHING FOUND OR SET.
- () RECORD AND MEASURED DATA PER 7 M 80 UNLESS OTHERWISE NOTED.
- 7 M 80 MAP, BOOK AND PAGE.
- 123 O.R. 456 OFFICIAL RECORD, VOLUME AND PAGE.
- P.U.E. PUBLIC UTILITY EASEMENT.

CURVE TABLE

() INDICATES RECORD DATA PER 7 M 80, UNLESS OTHERWISE SHOWN.

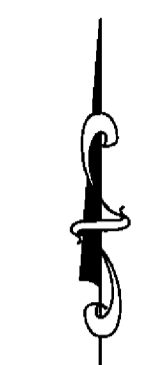
CURVE	RADIUS	LENGTH	DELTA
A	(219.84')	(154.67')	(40°18'42")
A1	(194.84')	(118.07')	(34°43'18")
B	(1400.00')	(193.65')	(07°55'31")
B1	(1375.00')	(138.90')	(05°47'16")
C	(25.00')	(45.44')	(104°08'25")
D	(289.95')	(165.37')	(32°40'38")
D1	(289.95')	(97.41')	(20°40'29")
E	(1555.44')	(474.53')	(17°28'47")
E1	(1530.44')	(466.14')	(17°27'04")
F	(320.83')	260.32'	46°29'23"
F1	(320.83')	(177.61')	(31°43'08")
F2	(340.83')	(258.36')	(43°25'53")

TANGENT TABLE

() INDICATES RECORD DATA PER 7 M 80, UNLESS OTHERWISE SHOWN.

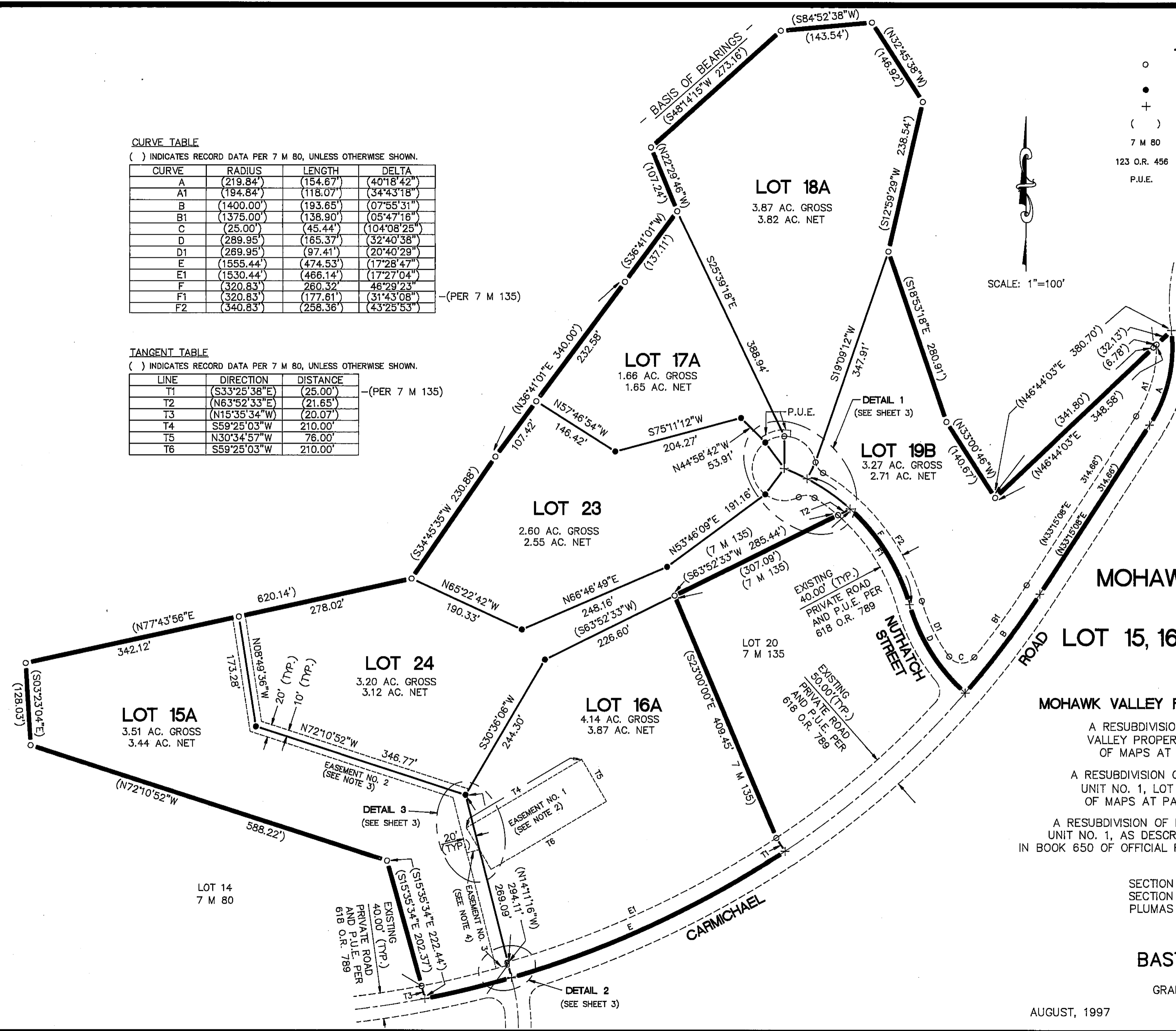
LINE	DIRECTION	DISTANCE
T1	(S33°25'38"E)	(25.00')
T2	(N63°52'33"E)	(21.65')
T3	(N15°35'34"W)	(20.07')
T4	(S59°25'03"W)	210.00'
T5	(N30°34'57"W)	76.00'
T6	(S59°25'03"W)	210.00'

SCALE: 1"=100'



NOTES:

1. THE BASIS OF BEARINGS FOR THIS MAP IS THE NORTHWESTERLY LINE OF LOT 18 OF MOHAWK VALLEY PROPERTIES UNIT NO. 1, GIVEN AS N 48°14'15" E. IN BOOK 7 OF MAPS AT PAGE 80, PLUMAS COUNTY RECORDS.
2. EASEMENT NO. 1 --- A PRIVATE SEWAGE DISPOSAL EASEMENT FOR CONSTRUCTION, OPERATION, MAINTENANCE AND REPLACEMENT OF A COMMON SEWAGE DISPOSAL SYSTEM FOR THE USE OF LOTS 15A, 16A AND 24, AS SHOWN HEREON.
3. EASEMENT NO. 2 --- A PRIVATE SEWER AND PRIVATE UTILITY EASEMENT FOR CONSTRUCTION, OPERATION AND MAINTENANCE OF SEWER LINES AND UTILITIES TO SERVE LOTS 15A, 16A AND 24, AS SHOWN HEREON.
4. EASEMENT NO. 3 --- A 20 FOOT WIDE PRIVATE UTILITY EASEMENT FOR THE USE OF LOTS 15A, 16A AND 24, AS SHOWN HEREON.



**MOHAWK VALLEY PROPERTIES
UNIT NO. 1
LOT 15, 16, 17, 18, 19A RESUBDIVISION
A PLANNED DEVELOPMENT**

FOR
MOHAWK VALLEY PROPERTIES, INC. A CALIFORNIA CORPORATION

A RESUBDIVISION OF LOTS 15, 17 AND 18 OF MOHAWK VALLEY PROPERTIES UNIT NO. 1, RECORDED IN BOOK 7 OF MAPS AT PAGE 80, PLUMAS COUNTY RECORDS.

A RESUBDIVISION OF LOT 16 OF MOHAWK VALLEY PROPERTIES UNIT NO. 1, LOT 16 RESUBDIVISION, RECORDED IN BOOK 7 OF MAPS AT PAGE 135, PLUMAS COUNTY RECORDS AND,

A RESUBDIVISION OF LOT 19A WITHIN MOHAWK VALLEY PROPERTIES UNIT NO. 1, AS DESCRIBED IN THE LOT LINE ADJUSTMENT RECORDED IN BOOK 650 OF OFFICIAL RECORDS AT PAGE 271, PLUMAS COUNTY RECORDS.

WITHIN PORTIONS OF:
SECTION 36 T. 22 N., R. 12 E. M.D.M.;
SECTION 31 T. 22 N., R. 13 E. M.D.M.;
PLUMAS COUNTY, CALIFORNIA

PREPARED BY:
BASTIAN ENGINEERING
P.O. BOX 280
GRAEAGLE, CALIFORNIA 96103
LS 7045

AUGUST, 1997

SHEET 2 OF 5