

North Line Section 15

See Sheet 4

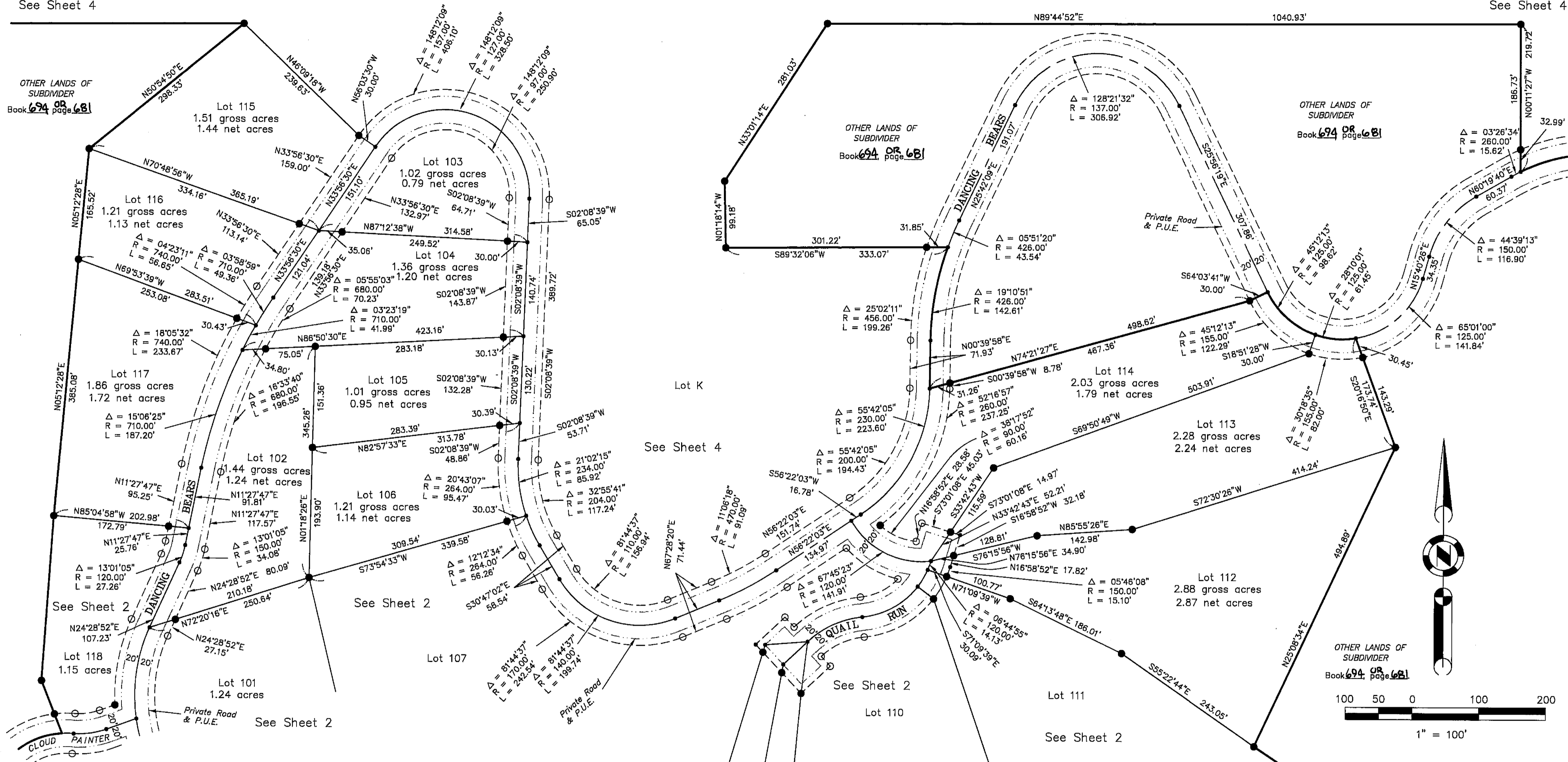
See Sheet 4

OTHER LANDS OF SUBDIVIDER  
Book 694 OR page 681

OTHER LANDS OF SUBDIVIDER  
Book 694 OR page 681

OTHER LANDS OF SUBDIVIDER  
Book 694 OR page 681

OTHER LANDS OF SUBDIVIDER  
Book 694 OR page 681



LEGEND

- FOUND point as described
- SET 5/8" rebar with Aluminum Cap LS 2843
- SET 5/8" rebar with Plastic Cap LS 2843
- Nothing Found or Set
- 10' Snowstorage, Landscape & P.U.E. easement
- - - Road & P.U.E. easement
- - - 20' Landscape & underground utility easement
- (R1) RECORD per 10 RS 83
- P.U.E. Public Utility Easement for Underground Utilities

GOLD MOUNTAIN  
UNIT 5 "DANCING BEARS"  
a Planned Development  
for  
Gold Mountain Ranch, Inc.  
A Portion of Section 15  
T. 22 N., R 13 E., M.D.M.  
Plumas County, California  
Scale 1" = 100' March, 1997

Hamby Surveying Inc.  
P.O. Box 1209  
Portola, CA 96122  
(916) 832-5571

Sheet 3 of 5