

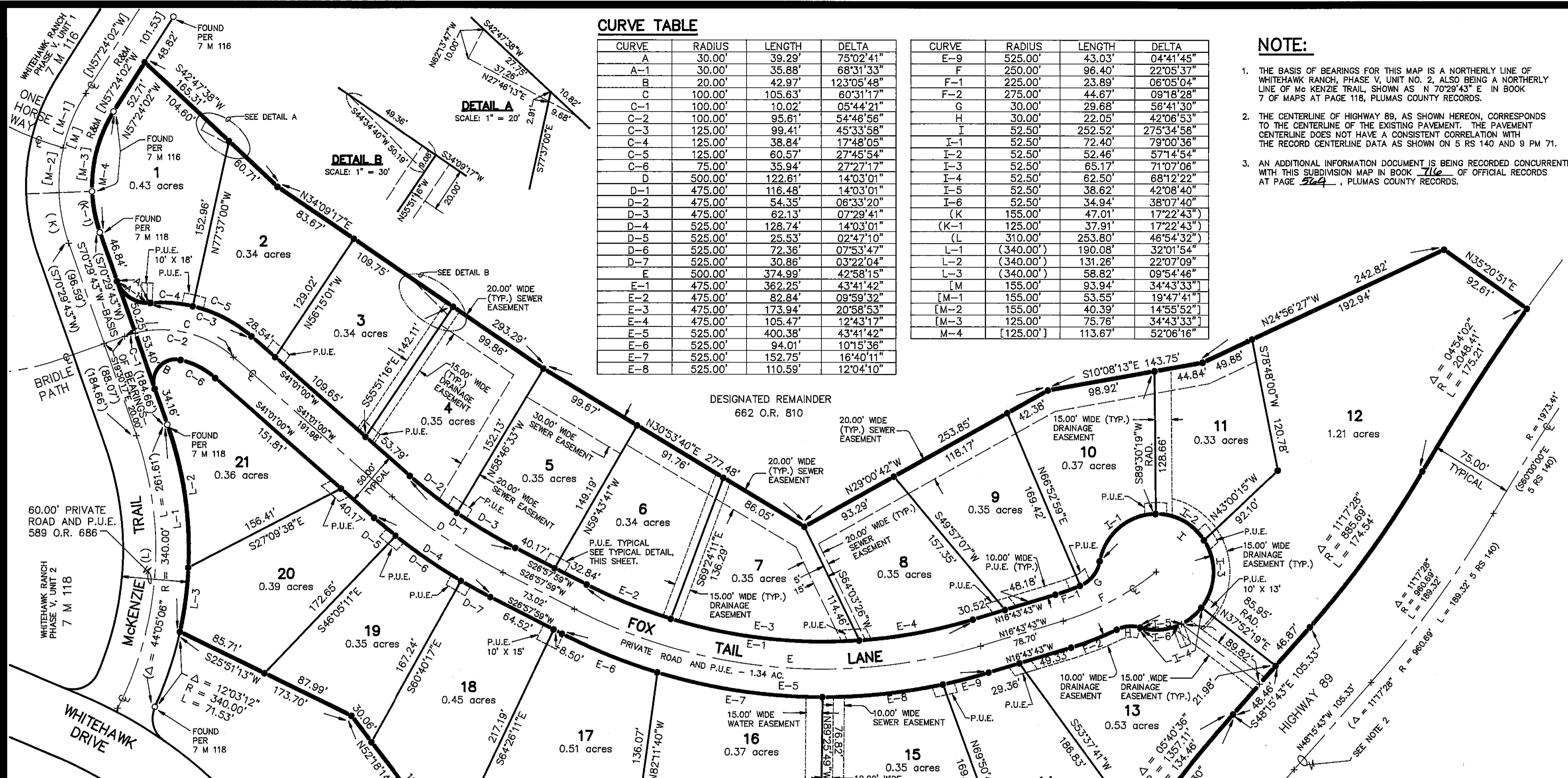
CURVE TABLE

CURVE	RADIUS	LENGTH	DELTA
A	30.00'	39.29'	75°02'41"
A-1	30.00'	35.88'	68°31'33"
B	20.00'	42.97'	123°05'48"
C	100.00'	105.63'	60°31'17"
C-1	100.00'	10.02'	05°44'21"
C-2	100.00'	95.61'	54°46'56"
C-3	125.00'	99.41'	45°33'58"
C-4	125.00'	38.84'	17°48'05"
C-5	125.00'	60.57'	27°45'54"
C-6	75.00'	35.94'	27°27'17"
D	500.00'	122.61'	14°03'01"
D-1	475.00'	116.48'	14°03'01"
D-2	475.00'	54.35'	06°33'20"
D-3	475.00'	62.13'	07°29'41"
D-4	525.00'	128.74'	14°03'01"
D-5	525.00'	25.53'	02°47'10"
D-6	525.00'	72.38'	07°53'47"
D-7	525.00'	30.86'	03°22'04"
E	500.00'	374.99'	42°58'15"
E-1	475.00'	362.25'	43°41'42"
E-2	475.00'	82.84'	09°59'32"
E-3	475.00'	173.94'	20°58'53"
E-4	475.00'	105.47'	12°43'17"
E-5	525.00'	400.38'	43°41'42"
E-6	525.00'	94.01'	10°15'36"
E-7	525.00'	152.75'	16°40'11"
E-8	525.00'	110.59'	12°04'10"

CURVE	RADIUS	LENGTH	DELTA
E-9	525.00'	43.03'	04°41'45"
F	250.00'	96.40'	22°05'37"
F-1	225.00'	23.89'	06°05'04"
F-2	275.00'	44.67'	09°18'28"
G	30.00'	29.68'	56°41'30"
H	30.00'	22.05'	42°06'53"
I	52.50'	252.52'	275°34'58"
I-1	52.50'	72.40'	79°00'36"
I-2	52.50'	52.46'	57°14'54"
I-3	52.50'	65.17'	71°07'06"
I-4	52.50'	62.50'	68°12'22"
I-5	52.50'	38.62'	42°08'40"
I-6	52.50'	34.94'	38°07'40"
(K	155.00'	47.01'	17°22'43"
(K-1	125.00'	37.91'	17°22'43"
(L	310.00'	253.80'	46°54'32"
L-1	(340.00')	190.08'	32°01'54"
L-2	(340.00')	131.26'	22°07'09"
L-3	(340.00')	58.82'	09°54'46"
[M	155.00'	93.94'	34°43'33"
[M-1	155.00'	53.55'	19°47'41"
[M-2	155.00'	40.39'	14°55'52"
[M-3	125.00'	75.76'	34°43'33"
M-4	[125.00']	113.67'	52°06'16"

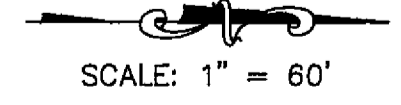
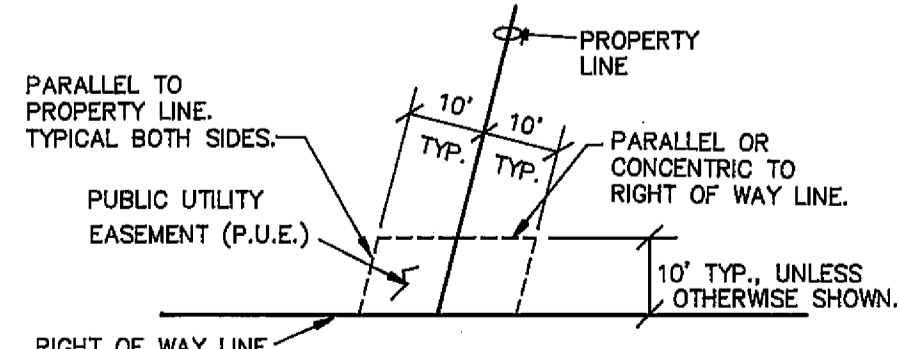
NOTE:

1. THE BASIS OF BEARINGS FOR THIS MAP IS A NORTHERLY LINE OF WHITEHAWK RANCH, PHASE V, UNIT NO. 2, ALSO BEING A NORTHERLY LINE OF Mc KENZIE TRAIL, SHOWN AS N 70°29'43" E IN BOOK 7 OF MAPS AT PAGE 118, PLUMAS COUNTY RECORDS.
2. THE CENTERLINE OF HIGHWAY 89, AS SHOWN HEREON, CORRESPONDS TO THE CENTERLINE OF THE EXISTING PAVEMENT. THE PAVEMENT CENTERLINE DOES NOT HAVE A CONSISTENT CORRELATION WITH THE RECORD CENTERLINE DATA AS SHOWN ON 5 RS 140 AND 9 PM 71.
3. AN ADDITIONAL INFORMATION DOCUMENT IS BEING RECORDED CONCURRENTLY WITH THIS SUBDIVISION MAP IN BOOK 716 OF OFFICIAL RECORDS AT PAGE 264, PLUMAS COUNTY RECORDS.



LEGEND

- FOUND MONUMENT: 1/2" REBAR WITH ALUMINUM CAP STAMPED R.C.E. 13225, PER 7 M 116 OR 7 M 118 AS NOTED.
- SET 1/2" REBAR WITH ALUMINUM CAP STAMPED L.S. 7045
- ⊕ COMPUTED POINT, NOTHING SET.
- 662 O.R. 810 OFFICIAL RECORD, VOLUME AND PAGE.
- 7 M 116 MAPS, BOOK AND PAGE.
- P.U.E. PUBLIC UTILITY EASEMENT
- () RECORD AND MEASURED DATA PER 7 M 118, UNLESS OTHERWISE INDICATED.
- [] RECORD DATA PER 7 M 116.
- RAD. INDICATES A RADIAL BEARING.
- R & M RECORD AND MEASURED DATA.



WHITEHAWK RANCH PHASE VII

A PLANNED DEVELOPMENT FOR
WHITEHAWK DEVELOPMENT GROUP, LLC
 WITHIN PORTIONS OF: SECTION 32, T. 22 N., R. 13 E., AND SECTION 5, T. 21 N., R. 13 E., M.D.M. PLUMAS COUNTY, CALIFORNIA

PREPARED BY:
BASTIAN ENGINEERING
 P.O. BOX 280
 GRAEAGLE, CALIFORNIA 96103
 L.S. 7045