

CURVE TABLE

(ALL DATA IS RECORD PER 7 M 80 AND MEASURED OR CALCULATED)

CURVE	RADIUS	LENGTH	DELTA
A	1575.44'	130.00'	04°43'40"
A1	1575.44'	151.46'	05°30'30"
A2	1575.44'	88.94'	03°14'04"
B	25.00'	43.33'	99°18'11"
C	255.46'	140.20'	31°26'41"
D	504.35'	95.62'	10°51'48"
D1	524.35'	108.46'	11°51'04"
D2	484.35'	85.39'	10°06'05"
E	295.46'	173.43'	33°37'54"
F	25.00'	34.75'	79°39'00"
G	1580.44'	221.64'	08°02'06"
G1	1580.44'	220.00'	07°58'32"

EASEMENT NO. 1

SEWAGE DISPOSAL EASEMENT (SEE NOTE 2)

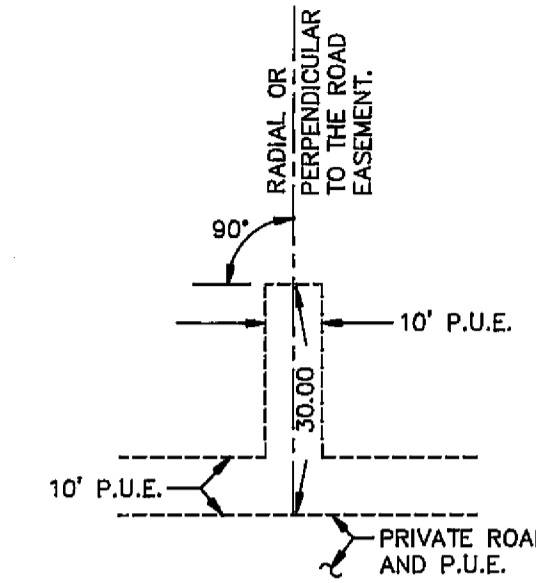
LINE	DIRECTION	DISTANCE
L1	N08°29'19"E	59.88'
L2	S71°29'41"E	64.87'
L3	N33°25'38"W	134.29'
L4	N61°22'56"E	165.32'
L5	N80°41'43"E	80.92'
L6	N00°11'14"W	120.53'
L7	S61°01'54"W	173.04'

EASEMENT NO. 2

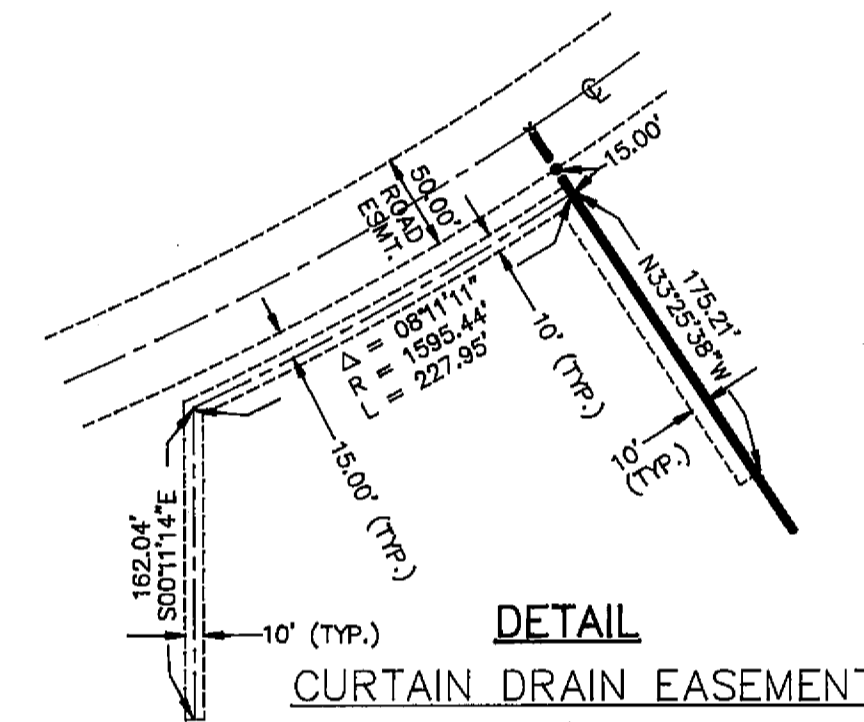
SEWER EASEMENT (SEE NOTE 3)

LINE	DIRECTION	DISTANCE
L8	S61°01'54"W	47.63'
L9	N33°23'21"W	23.24'

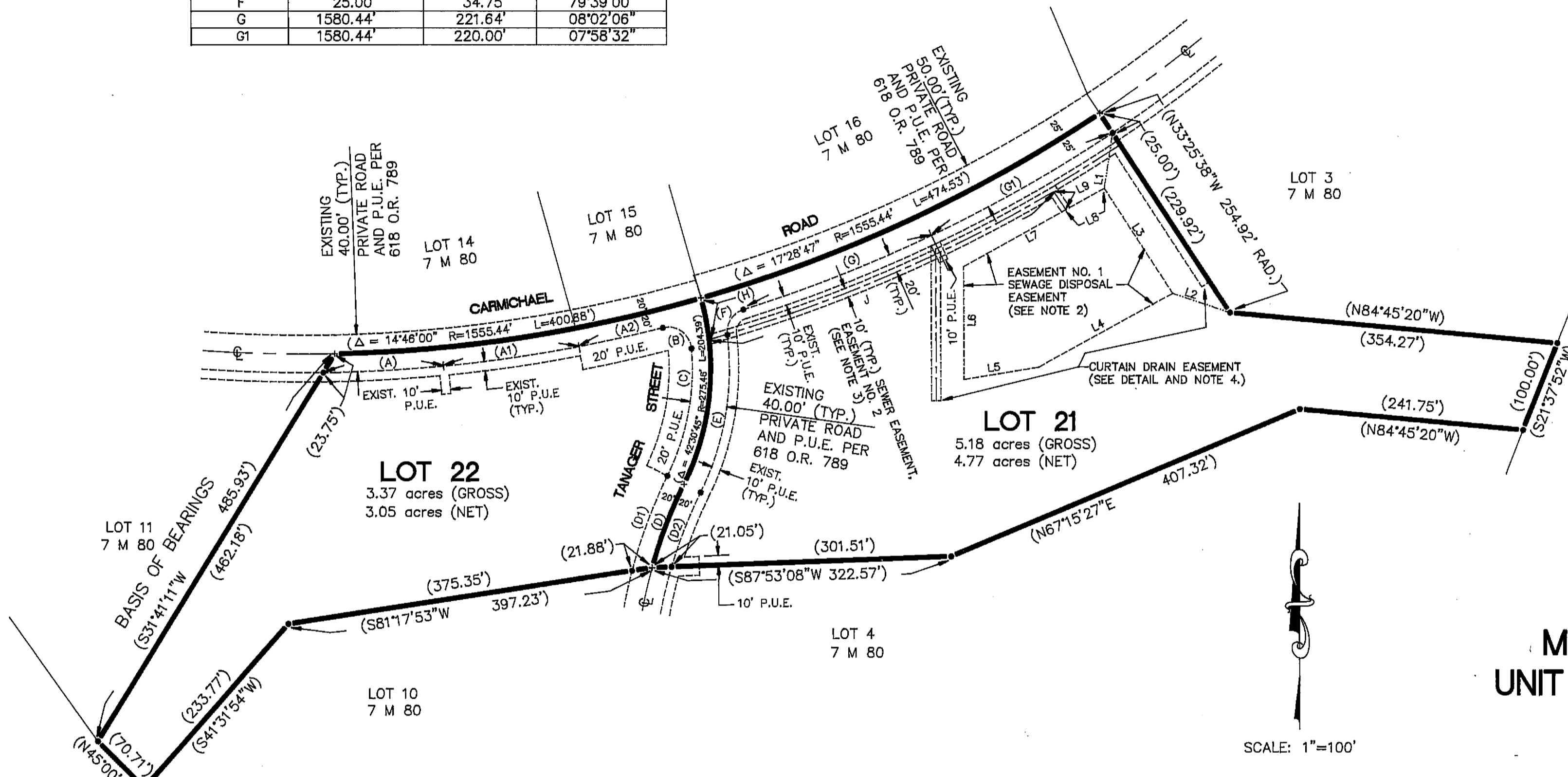
CURVE	RADIUS	LENGTH	DELTA
H	275.46'	45.20'	09°24'05"
J	1600.44'	400.75'	14°20'49"



TYPICAL DETAIL
EXISTING PUBLIC UTILITY EASEMENTS
(AT LOCATIONS SHOWN)
NOT TO SCALE



DETAIL
CURTAIN DRAIN EASEMENT
EASEMENT NO. 3
(SEE NOTE 4)
SCALE: 1" = 100'



LEGEND

- FOUND 1/2" REBAR WITH ALUMINUM CAP STAMPED RCE 13225 PER 7 M 80 UNLESS OTHERWISE NOTED.
- ⊕ CALCULATED CORNER POSITION. NOTHING FOUND OR SET.
- () RECORD AND MEASURED DATA PER 7 M 80 UNLESS OTHERWISE NOTED.
- 7 M 80 MAP, BOOK AND PAGE.
- 123 O.R. 456 OFFICIAL RECORD, VOLUME AND PAGE.
- P.U.E. PUBLIC UTILITY EASEMENT.
- RAD. INDICATES A RADIAL BEARING

NOTES:

1. THE BASIS OF BEARINGS FOR THIS MAP IS THE NORTHWESTERLY LINE OF LOT A OF MOHAWK VALLEY PROPERTIES UNIT NO. 1, GIVEN AS N 31°41'11" E IN BOOK 7 OF MAPS AT PAGE 80, PLUMAS COUNTY RECORDS.
2. EASEMENT NO. 1 -- A SEWAGE DISPOSAL EASEMENT FOR CONSTRUCTION, OPERATION, MAINTENANCE AND REPLACEMENT OF A COMMON SEWAGE LEACHFIELD SYSTEM FOR THE USE OF LOTS 21 AND 22 AS SHOWN HEREON.
3. EASEMENT NO. 2 -- A 10 FOOT WIDE SEWER EASEMENT FOR CONSTRUCTION, OPERATION AND MAINTENANCE OF SEWER LINES TO SERVE THE SEWAGE DISPOSAL EASEMENT.
4. EASEMENT NO. 3 -- A 10 FOOT WIDE EASEMENT FOR CONSTRUCTION, RECONSTRUCTION, AND OPERATION OF A CURTAIN DRAIN.
5. ALL PUBLIC UTILITY EASEMENTS (P.U.E.) SHOWN HEREON ARE EXISTING EASEMENTS AS SHOWN ON 7 M 80.

MOHAWK VALLEY PROPERTIES
UNIT NO. 1, LOT A RESUBDIVISION
A PLANNED DEVELOPMENT

FOR
MOHAWK MEADOWS
A CALIFORNIA GENERAL PARTNERSHIP
A RESUBDIVISION OF LOT A OF MOHAWK VALLEY PROPERTIES
UNIT NO 1, RECORDED IN BOOK 7 OF MAPS AT PAGE 80,
PLUMAS COUNTY RECORDS

WITHIN PORTIONS OF:
SECTION 1 T. 21 N., R. 12 E. M.D.M.;
SECTION 6 T. 21 N., R. 13 E. M.D.M.;
SECTION 36 T. 22 N., R. 12 E. M.D.M.;
SECTION 31 T. 22 N., R. 13 E. M.D.M.;
PLUMAS COUNTY, CALIFORNIA

PREPARED BY:
BASTIAN ENGINEERING
P.O. BOX 280
GRAEAGLE, CALIFORNIA 96103
L.S. 7045

FEBRUARY, 1997

SHEET 2 OF 3