

**OWNER'S STATEMENT**

MOHAWK VALLEY PROPERTIES, INC., A CALIFORNIA CORPORATION, HAVING RECORD TITLE INTEREST IN THE HEREON SUBDIVIDED LANDS DOES HEREBY CONSENT TO THE PREPARATION AND RECORDATION OF THIS MAP.

SOUTH CARMICHAEL ROAD AS SHOWN ON THE MAP IS HEREBY OFFERED FOR DEDICATION FOR PUBLIC UTILITY PURPOSES, AND FOR INGRESS, EGRESS, SUPPORT AND USE BY ALL PUBLIC UTILITIES, LAW ENFORCEMENT, FIRE PROTECTION, WELFARE AND OTHER RELATED PUBLIC OR COUNTY AGENCIES, THEIR VEHICLES AND PERSONNEL, FOR THE SOLE PURPOSE OF PERFORMING OFFICIAL BUSINESS.

THE PUBLIC UTILITY EASEMENTS (P.U.E.) AS SHOWN ON THE MAP ARE HEREBY OFFERED FOR DEDICATION FOR SUCH PURPOSES. PUBLIC UTILITY EASEMENTS ARE FOR INSTALLATION, MAINTENANCE AND REPAIR OF ALL UTILITIES CONSTRUCTED OVER, ON, ACROSS AND UNDER THE LOCATIONS AS SHOWN ON THE MAP WITH THE RIGHT TO TRIM AND REMOVE, AS OFTEN AS NECESSARY, TREES, LIMBS AND BRUSH FOR THE SOLE PURPOSE OF INSTALLING, MAINTAINING AND/OR REPAIRING SAID UTILITIES.

MOHAWK VALLEY PROPERTIES, INC., A CALIFORNIA CORPORATION

DATE: July 23, 1997 BY: Donald F. Williams  
DONALD F. WILLIAMS  
PRESIDENT

STATE OF CALIFORNIA }  
COUNTY OF PLUMAS } SS

ON July 23, 1997, BEFORE ME, HELEN M. STRAEN, Notary Public PERSONALLY APPEARED DONALD F. WILLIAMS, PERSONALLY KNOWN TO ME (OR APPROVED TO ME ON THE BASIS OF SATISFACTORY EVIDENCE) TO BE THE PERSON WHOSE NAME IS SUBSCRIBED TO THE WITHIN INSTRUMENT AND ACKNOWLEDGED TO ME THAT HE EXECUTED THE SAME IN HIS AUTHORIZED CAPACITY, AND THAT BY HIS SIGNATURE ON THE INSTRUMENT, THE PERSON, OR THE ENTITY UPON BEHALF OF WHICH THE PERSON ACTED, EXECUTED THE INSTRUMENT.

WITNESS MY HAND AND OFFICIAL SEAL. County of Plumas  
HELEN M. STRAEN  
My Commission Expires  
4-26-99

**COUNTY CLERK'S CERTIFICATE**

I, JUDITH WELLS, CLERK OF THE COUNTY OF PLUMAS, STATE OF CALIFORNIA AND EX-OFFICIO CLERK OF THE BOARD OF SUPERVISORS OF SAID COUNTY, HEREBY CERTIFY THAT THE HEREIN EMBODIED MAP WAS APPROVED BY SAID BOARD OF SUPERVISORS CONVENED IN A REGULAR MEETING UPON THE 5th DAY OF August, 1997. THE OFFER OF DEDICATION OF SOUTH CARMICHAEL ROAD, AS SHOWN ON THE MAP, WAS ACCEPTED FOR THE USES NOTED. THE OFFER OF DEDICATION OF PUBLIC UTILITY EASEMENTS, AS SHOWN ON THE MAP, WERE ACCEPTED FOR THE USES NOTED.

DATED: 8-5-97  
Judith Wells  
JUDITH WELLS  
COUNTY CLERK

**SURVEYOR'S STATEMENT**

THIS MAP AND THE SURVEY PERFORMED THEREFORE IN SEPTEMBER 1996, WERE MADE BY ME OR UNDER MY DIRECTION. THE SURVEY IS TRUE AND COMPLETE AS SHOWN. ALL OF THE MONUMENTS SHOWN HEREON ARE OF THE CHARACTER AND OCCUPY THE POSITIONS INDICATED AND ARE SUFFICIENT TO ENABLE THE SURVEY TO BE RETRACED.

DATED: July 23, 1997  
Daniel B. Bastian  
DANIEL B. BASTIAN, LS 7045  
LICENSE EXP. DATE 12-31-98

**COUNTY SURVEYOR'S STATEMENT**

I HAVE EXAMINED THIS MAP AND FIND IT IS SUBSTANTIALLY THE SAME AS IT APPEARED ON THE TENTATIVE MAP AND ANY APPROVED ALTERATIONS THEREOF. ALL PROVISIONS OF THE SUBDIVISION MAP ACT AND ANY LOCAL ORDINANCES APPLICABLE AT THE TIME OF APPROVAL OF THE TENTATIVE MAP HAVE BEEN COMPLIED WITH AND I AM SATISFIED THAT THE MAP IS TECHNICALLY CORRECT.

DATED: 8/5/97  
R. Tom Hunter  
R. TOM HUNTER, R.C.E. 30515  
PLUMAS COUNTY SURVEYOR  
LICENSE EXP. DATE 3-31-2000

**COUNTY RECORDER'S CERTIFICATE**

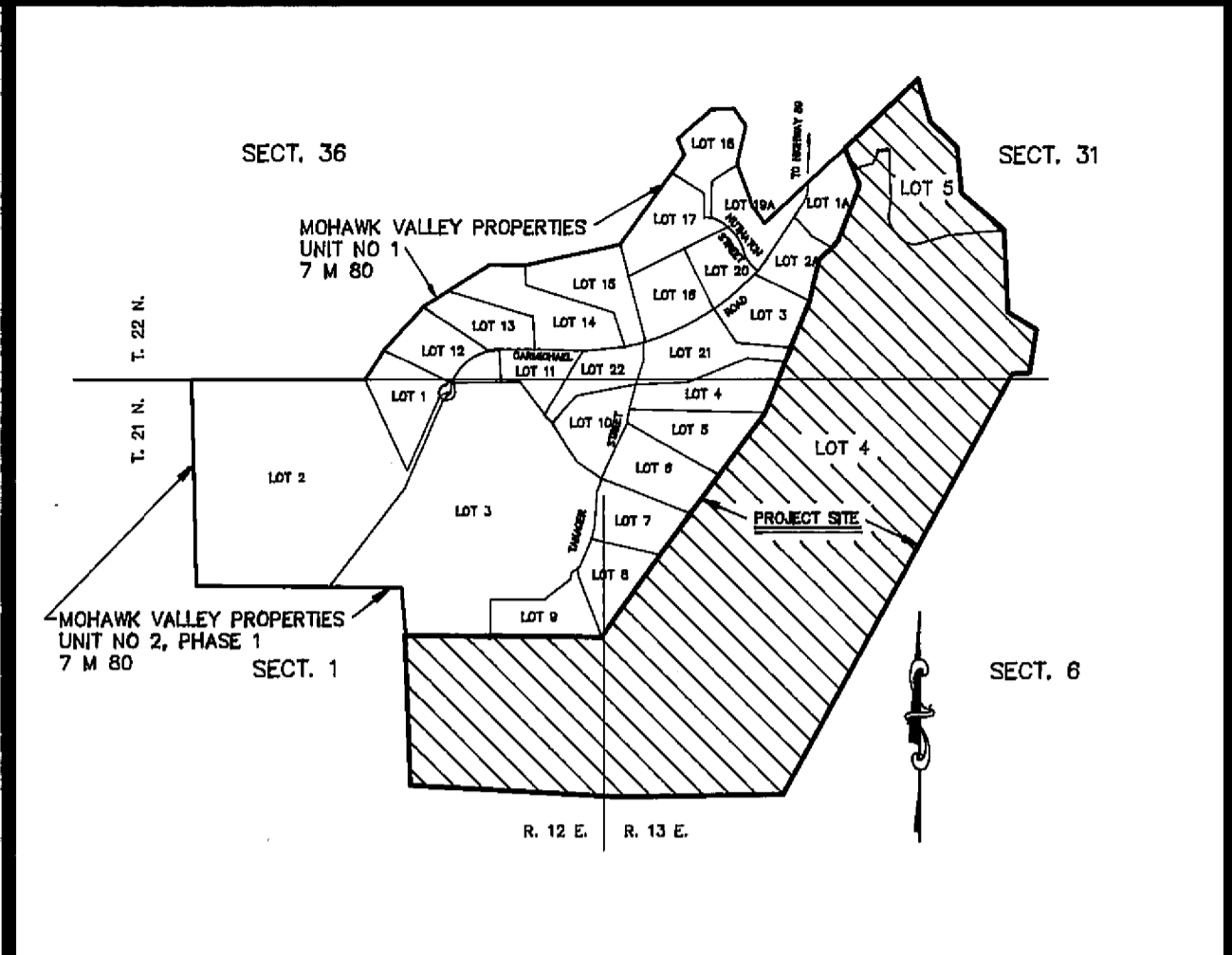
FILED THIS 7th DAY OF August, 1997, AT 1:30 P.M. IN BOOK 8 OF MAPS, AT PAGE 52-56 AT THE REQUEST OF THE COUNTY SURVEYOR.

JUDITH WELLS  
COUNTY RECORDER  
FEE: \$ 16.00  
FILE NO.: 5039  
BY: Judith Wells

**COUNTY TAX COLLECTOR'S CERTIFICATE**

I BARBARA J. COATES, TAX COLLECTOR OF THE COUNTY OF PLUMAS, STATE OF CALIFORNIA, DO HEREBY CERTIFY THAT THERE ARE NO TAX LIENS AGAINST THE LOTS, AS SHOWN HEREON, FOR UNPAID STATE, COUNTY, MUNICIPAL, OR LOCAL TAXES OR SPECIAL ASSESSMENTS COLLECTED AS TAXES, EXCEPT TAXES OR ASSESSMENTS NOT YET PAYABLE. TAXES OR ASSESSMENTS WHICH ARE A LIEN BUT NOT YET PAYABLE, ARE ESTIMATED TO BE IN THE AMOUNT OF \$ 1,017.00.

DATED: 7-25-97  
Barbara J. Coates  
By: Penny Dunbar, asst.  
BARBARA J. COATES  
PLUMAS COUNTY TAX COLLECTOR



**LOCATION MAP**

SCALE: 1" = 800'

**AREA TABULATION**

LOTS 4 AND 5 ..... 167.65 AC. (NET)  
PRIVATE ROAD EASEMENT .... 0.31 AC.  
TOTAL ..... 167.96 AC. (GROSS)

**MOHAWK VALLEY PROPERTIES**  
**UNIT NO. 2, PHASE 2**  
**A PLANNED DEVELOPMENT**  
FOR  
**MOHAWK VALLEY PROPERTIES, INC.**  
A CALIFORNIA CORPORATION

WITHIN PORTIONS OF:  
SECTION 1 T. 21 N., R. 12 E. M.D.M.;  
SECTION 6 T. 21 N., R. 13 E. M.D.M.;  
SECTION 31 T. 22 N., R. 13 E. M.D.M.;  
PLUMAS COUNTY, CALIFORNIA

PREPARED BY:

**BASTIAN ENGINEERING**  
P.O. BOX 280  
GRAEAGLE, CALIFORNIA 96103  
L.S. 7045