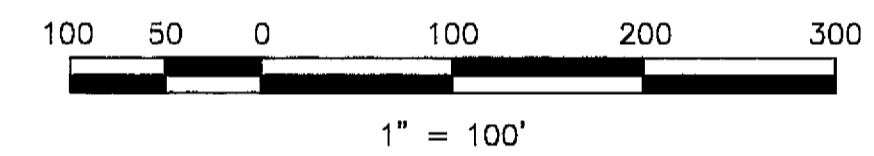
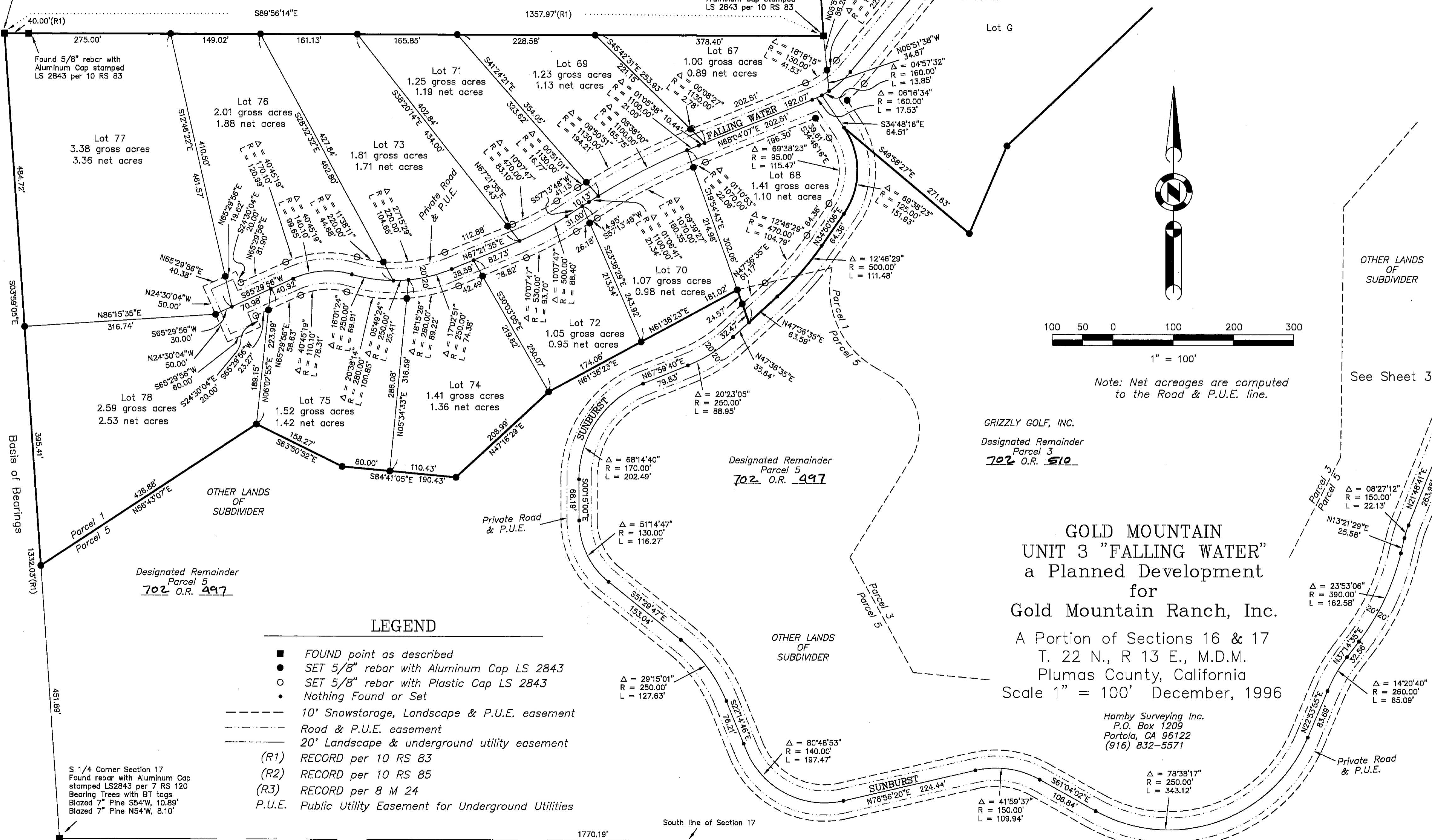


B.T. Tag on 34" Pine, N78°46'E, 44.7'  
Found Nail & tag, LS 2843  
In stone per 10 RS 83



Note: Net acreages are computed to the Road & P.U.E. line.

GRIZZLY GOLF, INC.  
Designated Remainder  
Parcel 3  
702 O.R. 510

Designated Remainder  
Parcel 5  
702 O.R. 497

### GOLD MOUNTAIN UNIT 3 "FALLING WATER" a Planned Development for Gold Mountain Ranch, Inc.

A Portion of Sections 16 & 17  
T. 22 N., R 13 E., M.D.M.  
Plumas County, California  
Scale 1" = 100' December, 1996

Hamby Surveying Inc.  
P.O. Box 1209  
Portola, CA 96122  
(916) 832-5571

- LEGEND**
- FOUND point as described
  - SET 5/8" rebar with Aluminum Cap LS 2843
  - SET 5/8" rebar with Plastic Cap LS 2843
  - Nothing Found or Set
  - - - 10' Snowstorage, Landscape & P.U.E. easement
  - - - Road & P.U.E. easement
  - - - 20' Landscape & underground utility easement
  - (R1) RECORD per 10 RS 83
  - (R2) RECORD per 10 RS 85
  - (R3) RECORD per 8 M 24
  - P.U.E. Public Utility Easement for Underground Utilities