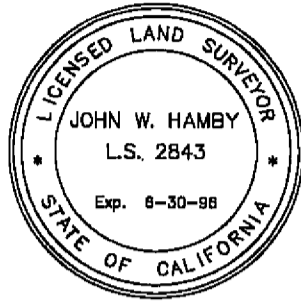


SURVEYOR'S STATEMENT

THIS MAP AND THE SURVEY PERFORMED THEREFOR IN MAY, 1996, WERE MADE BY ME OR UNDER MY DIRECTION. THE SURVEY IS TRUE AND COMPLETE AS SHOWN. ALL OF THE MONUMENTS SHOWN HEREON ARE OF THE CHARACTER AND OCCUPY THE POSITIONS INDICATED AND ARE SUFFICIENT TO ENABLE THE SURVEY TO BE RETRACED.



DATED: 8-5-96

John W. Hamby
JOHN W. HAMBY L.S. 2843

COUNTY SURVEYOR'S STATEMENT

I HAVE EXAMINED THIS MAP AND FIND IT IS SUBSTANTIALLY THE SAME AS IT APPEARED ON THE TENTATIVE MAP AND ANY APPROVED ALTERATIONS THEREOF. ALL PROVISIONS OF THE SUBDIVISION MAP ACT AND ANY LOCAL ORDINANCES APPLICABLE AT THE TIME OF APPROVAL OF THE TENTATIVE MAP HAVE BEEN COMPLIED WITH, AND I AM SATISFIED THAT THE MAP IS TECHNICALLY CORRECT.

DATED 8-9-96

R. Tom Hunter
R. TOM HUNTER R.C.E. 30515
Plumas County Surveyor
License Exp. Date 3-31-00

COUNTY TAX COLLECTOR'S CERTIFICATE

I, BARBARA J. COATES, TAX COLLECTOR OF THE COUNTY OF PLUMAS, STATE OF CALIFORNIA, DO HEREBY CERTIFY THAT THERE ARE NO TAX LIENS AGAINST THE LOTS AS SHOWN HEREON FOR UNPAID COUNTY, MUNICIPAL OR LOCAL TAXES OR SPECIAL ASSESSMENTS COLLECTED AS TAXES, EXCEPT TAXES OR ASSESSMENTS NOT YET PAYABLE. TAXES OR ASSESSMENTS WHICH ARE A LIEN BUT NOT YET PAYABLE ARE ESTIMATED TO BE IN THE AMOUNT OF None.

DATED: 8-6-96

Barbara J. Coates
By: Ginny Dunbar, asst.
BARBARA J. COATES
PLUMAS COUNTY TAX COLLECTOR

TRUSTEE'S CERTIFICATE

CAL-SIERRA TITLE COMPANY, AS TRUSTEE UNDER A DEED OF TRUST DATED APRIL 19, 1995, AND RECORDED IN BOOK 653 OF OFFICIAL RECORDS AT PAGE 563, DOES HEREBY CONSENT TO THE PREPARATION AND RECORDING OF THIS MAP.

CAL - SIERRA TITLE COMPANY

DATED: 8/6/96

By: David O. Windle
DAVID O. WINDLE
PRESIDENT

State of CALIFORNIA }
County of PLUMAS }

On 8/6/96 before me, ALICIA DALTON
personally appeared DAVID O. WINDLE

personally known to me - OR - proved to me on the basis of satisfactory evidence to be the person(s) whose name(s) is/are subscribed to the within instrument and acknowledged to me that he/she/they executed the same in his/her/their authorized capacity(ies), and that by his/her/their signature(s) on the instrument the person(s) or the entity upon behalf of which the person(s) acted, executed the instrument.

WITNESS my hand and official seal.

Alicia Dalton
Commission expires 11-1-96

COUNTY CLERK'S CERTIFICATE

I, JUDITH WELLS, CLERK OF THE COUNTY OF PLUMAS, STATE OF CALIFORNIA, AND EX-OFFICIO CLERK OF THE BOARD OF SUPERVISORS OF SAID COUNTY, HEREBY CERTIFY THAT THE HEREIN EMBODIED MAP WAS APPROVED BY THE SAID BOARD OF SUPERVISORS CONVENED IN REGULAR MEETING UPON THE 13TH DAY OF AUGUST, 1996. THE OFFER OF DEDICATION FOR UNDERGROUND PUBLIC UTILITY EASEMENTS AND ACCESS FOR MAINTENANCE AS SHOWN ON THE MAP WERE ACCEPTED FOR THE USES NOTED.

DATED: 8-13-1996

By: Joanne K. Bee, Asst. Clerk
JUDITH WELLS
PLUMAS COUNTY CLERK

OWNER'S STATEMENT

GOLD MOUNTAIN RANCH, INC., A CALIFORNIA CORPORATION HAVING RECORD TITLE INTEREST IN THE HEREIN SUBDIVIDED LANDS, DOES HEREBY CONSENT TO THE PREPARATION AND RECORDATION OF THIS MAP.

WINDSONG, MORNING SUN, DEER TRAIL, VILLAGE TRAIL, AND FOX RUN, AND THE 10' SNOW STORAGE, LANDSCAPE AND P.U.E. EASEMENTS, AS SHOWN ON THE MAP, ARE HEREBY OFFERED FOR DEDICATION AS PUBLIC UTILITY EASEMENTS FOR UNDERGROUND UTILITIES AND AS ACCESS FOR MAINTENANCE THEREOF AND WILL BE GRANTED TO THE GOLD MOUNTAIN HOMEOWNERS ASSOCIATION AS PRIVATE ROADS AND P.U.E.S FOR COMMON USE OF THE OWNERS OF GOLD MOUNTAIN PLANNED DEVELOPMENT. SAID PRIVATE ROADS WILL BE MAINTAINED BY THE GOLD MOUNTAIN HOMEOWNERS ASSOCIATION.

GOLD MOUNTAIN RANCH, INC.

by: Gariel Joe Garner, Chairman
by: Darrel D. Garner, President
by: Laurie K. Garner, C.F.O.
by: Margaret M. Garner, Secretary

State of California }
County of Plumas }

On August 8, 1996 before me, Janda S. Hadley, Notary

personally appeared DARIEL D. GARNER and MARGARET M. GARNER, GARIEL JOE GARNER and LAURIE K. GARNER.

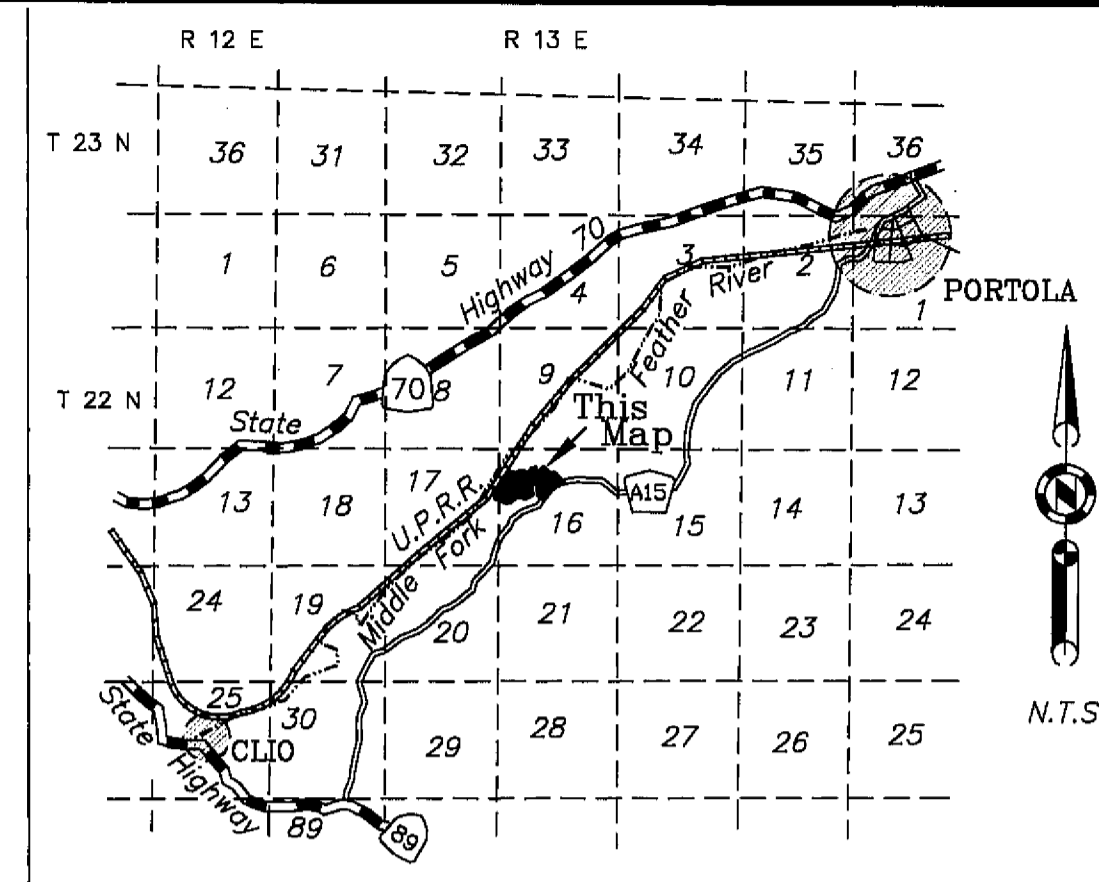
personally known to me - OR - proved to me on the basis of satisfactory evidence to be the persons whose names are subscribed to the within instrument and acknowledged to me that they executed the same in their authorized capacities, and that by their signatures on the instrument the persons or the entity upon behalf of which the persons acted, executed the instrument.

My Commission expires

WITNESS my hand and official seal.

7-20-2000

Janda S. Hadley



LOCATION MAP

AREA TABULATION

59.29 AC. IN LOTS
4.03 AC. IN ROAD EASEMENTS
63.32 AC. TOTAL

COUNTY RECORDER'S CERTIFICATE

FILED THIS 14TH DAY OF AUGUST 1996, AT 9:03 A.M. IN BOOK B OF MAPS AT PAGE 24-28 AT THE REQUEST OF THE COUNTY SURVEYOR.

FEE 16.00

JUDITH WELLS, County Recorder

FILE NO. 5496 A

By: Sue A. Peay
DEPUTY

GOLD MOUNTAIN
UNIT 1 - PHASE 1 "WINDSONG"
a Planned Development

for
Gold Mountain Ranch, Inc.

A Portion of Sections 16 & 17
T. 22 N., R 13 E., M.D.M.
Plumas County, California
Scale 1" = 100' May, 1996

Hamby Surveying Inc.
P.O. Box 1209
Portola, CA 96122
(916) 832-5571

Certificate of Correction Book # 6927 on 10/1/96 BK 692 pg 72