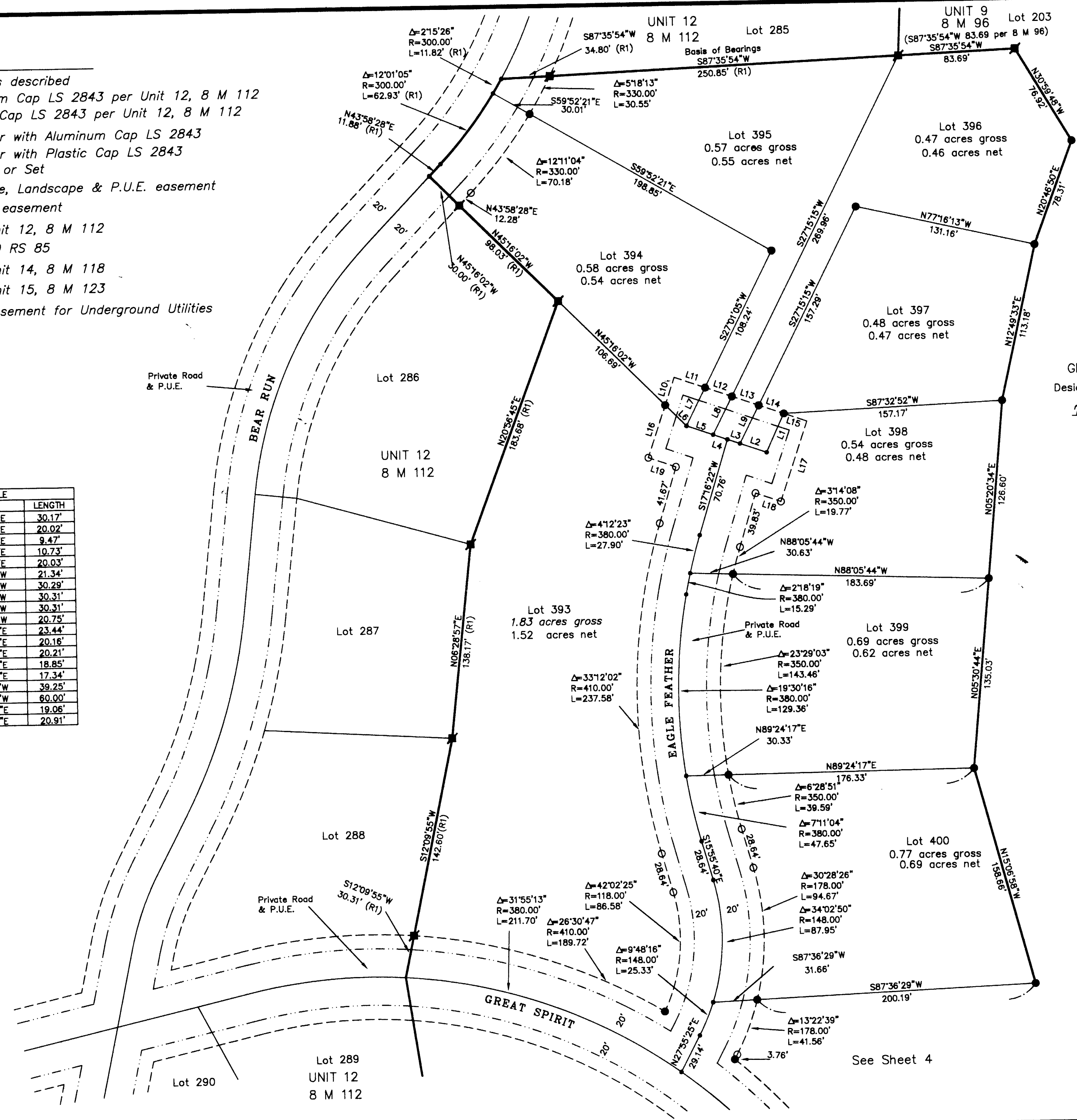


LEGEND

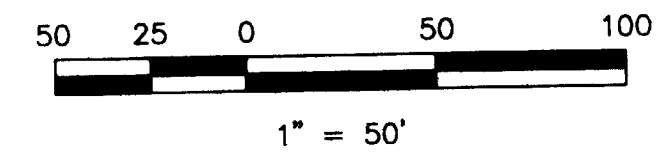
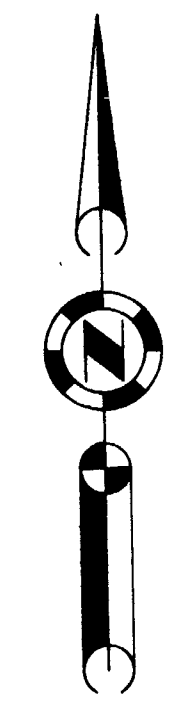
- Found Point as described
- Found Aluminum Cap LS 2843 per Unit 12, 8 M 112
- Found Plastic Cap LS 2843 per Unit 12, 8 M 112
- SET 5/8" rebar with Aluminum Cap LS 2843
- SET 5/8" rebar with Plastic Cap LS 2843
- Nothing Found or Set
- 10' Snowstorage, Landscape & P.U.E. easement
- - - - Road & P.U.E. easement
- (R1) RECORD per Unit 12, 8 M 112
- (R2) RECORD per 10 RS 85
- (R3) RECORD per Unit 14, 8 M 118
- (R4) RECORD per Unit 15, 8 M 123
- P.U.E. Public Utility Easement for Underground Utilities

| LINE | BEARING | LENGTH |
|------|-------------|--------|
| L1 | N25°02'50"E | 30.17' |
| L2 | S70°57'52"E | 20.02' |
| L3 | S70°57'52"E | 9.47' |
| L4 | S70°57'52"E | 10.73' |
| L5 | S70°57'52"E | 20.03' |
| L6 | N45°16'02"W | 21.34' |
| L7 | S27°01'05"W | 30.29' |
| L8 | S27°15'15"W | 30.31' |
| L9 | S27°15'15"W | 30.31' |
| L10 | S19°02'08"W | 20.75' |
| L11 | S70°57'52"E | 23.44' |
| L12 | S70°57'52"E | 20.16' |
| L13 | S70°57'52"E | 20.21' |
| L14 | S70°57'52"E | 18.85' |
| L15 | S70°57'52"E | 17.34' |
| L16 | S19°02'08"W | 39.25' |
| L17 | S19°02'08"W | 60.00' |
| L18 | S70°57'52"E | 19.06' |
| L19 | S70°57'52"E | 20.91' |



The Basis of Bearings for this map is the South line of Lot 285, shown as S87°35'54"W on the map of Gold Mountain, Unit No. 12 "Nakama" filed in the office of the Recorder of Plumas County in Book 8 of Maps, page 112.

GRIZZLY GOLF, INC.
Designated Remainder Parcel 3
795 O.R. 466



**GOLD MOUNTAIN
UNIT 16 "EAGLE FEATHER"
a Planned Development
for
Gold Mountain Ranch, Inc.**
A Portion of Section 16
T. 22 N., R 13 E.; M.D.M.
Plumas County, California
Scale 1" = 50' September, 1999

Hamby Surveying Inc.
P.O. Box 1209
Portola, CA 96122
(530) 832-5571