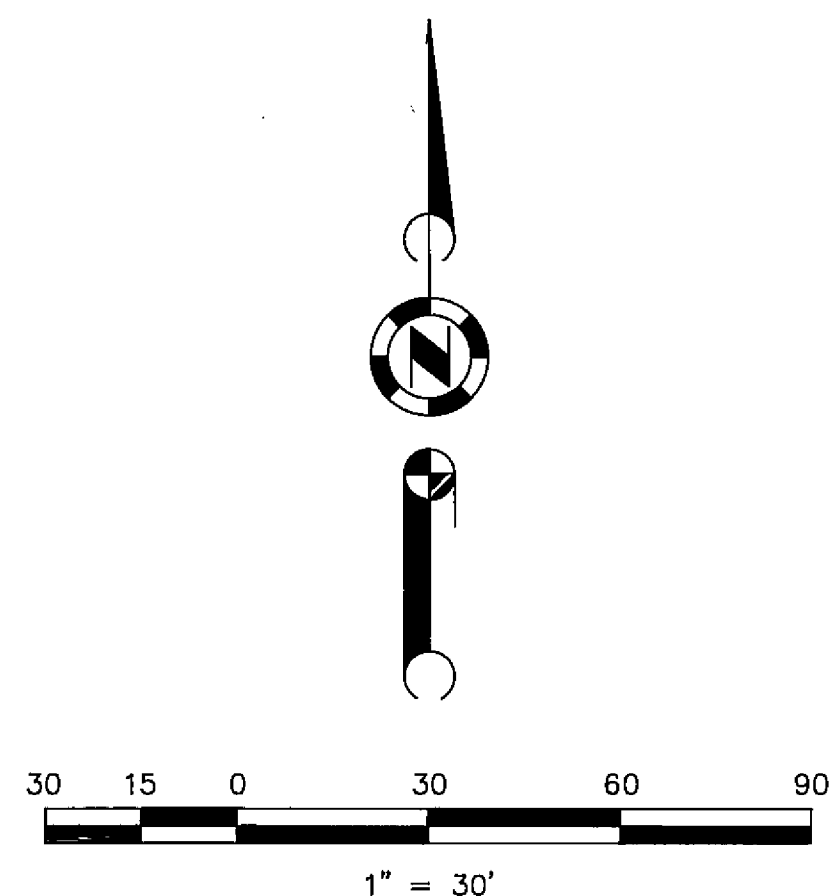
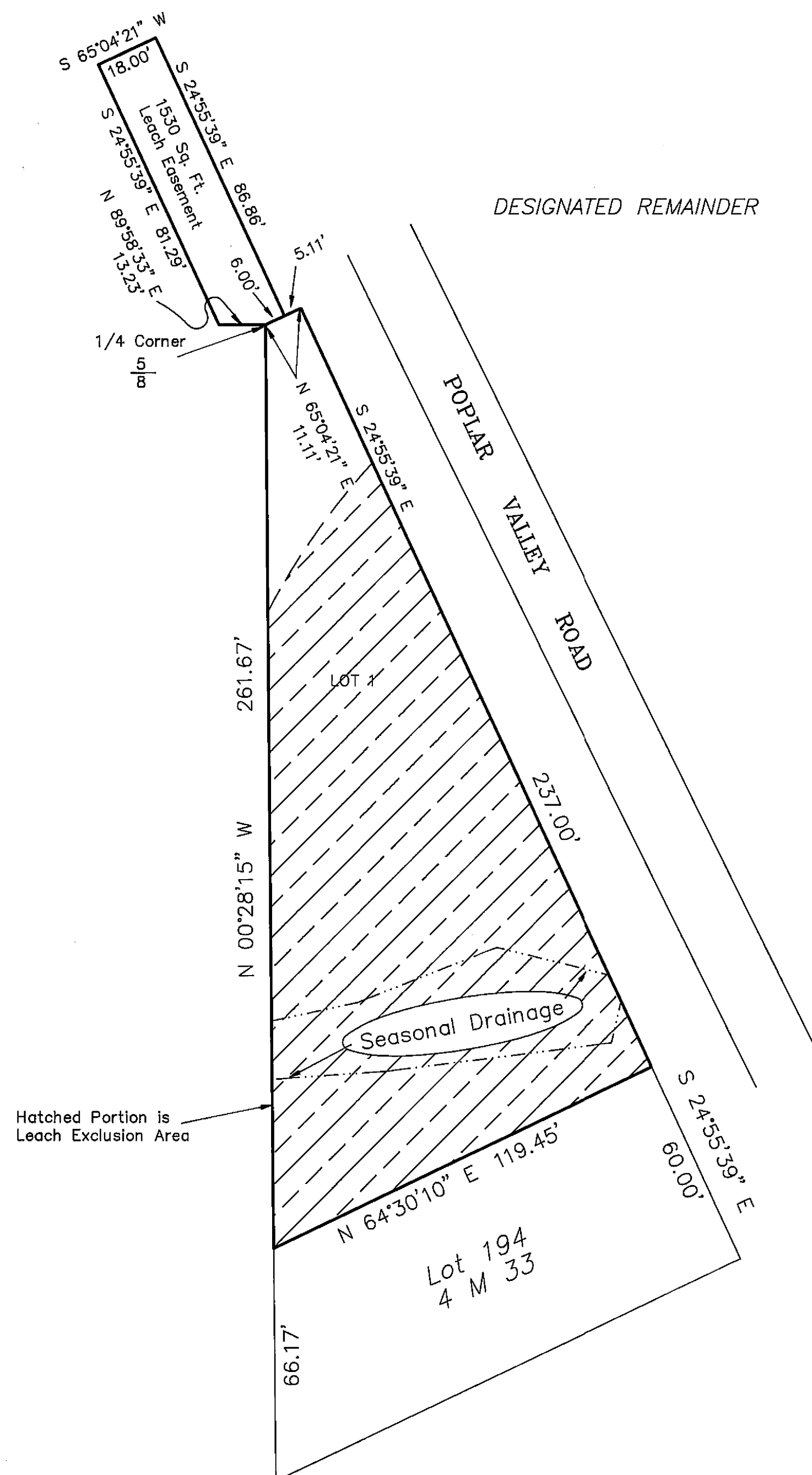


LOCATION MAP



NOTES:

1. The information shown hereon is for information purposes, describing conditions as of the filing and is not intended to affect record title interest.
2. The Additional information shown hereon is derived from public records or reports and does not imply the correctness or sufficiency of those records or reports by preparer.
3. Leach exclusion areas include 50 feet from seasonal watercourses, areas of high groundwater, slopes over 30%, all areas within 200 feet of ponds and all easements except as approved by the County Sanitarian.
4. Road shown hereon, Poplar Valley Road, is a private easement not subject to improvement or maintenance by Plumas County. Such easements will not become effective unless and until reservations and grants are included in the respective deeds.
5. A Road Maintenance Agreement is on file in Book 565 of Official Records at Page 708, Plumas County records.

ADDITIONAL INFORMATION SHEET
PLUMAS COMMERCIAL LOT NO. 2
SUBDIVISION
for

DI LORETO PLUMAS, LTD.,
A CALIFORNIA LIMITED PARTNERSHIP

A portion of Section 5 & 8, T. 22 N., R. 12 E., M.D.M.
Plumas County California
Scale 1" = 30' July, 1991

HAMBY SURVEYING INC.
PO BOX 1209
PORTOLA, CA 96122
Phone (916) 832-5571