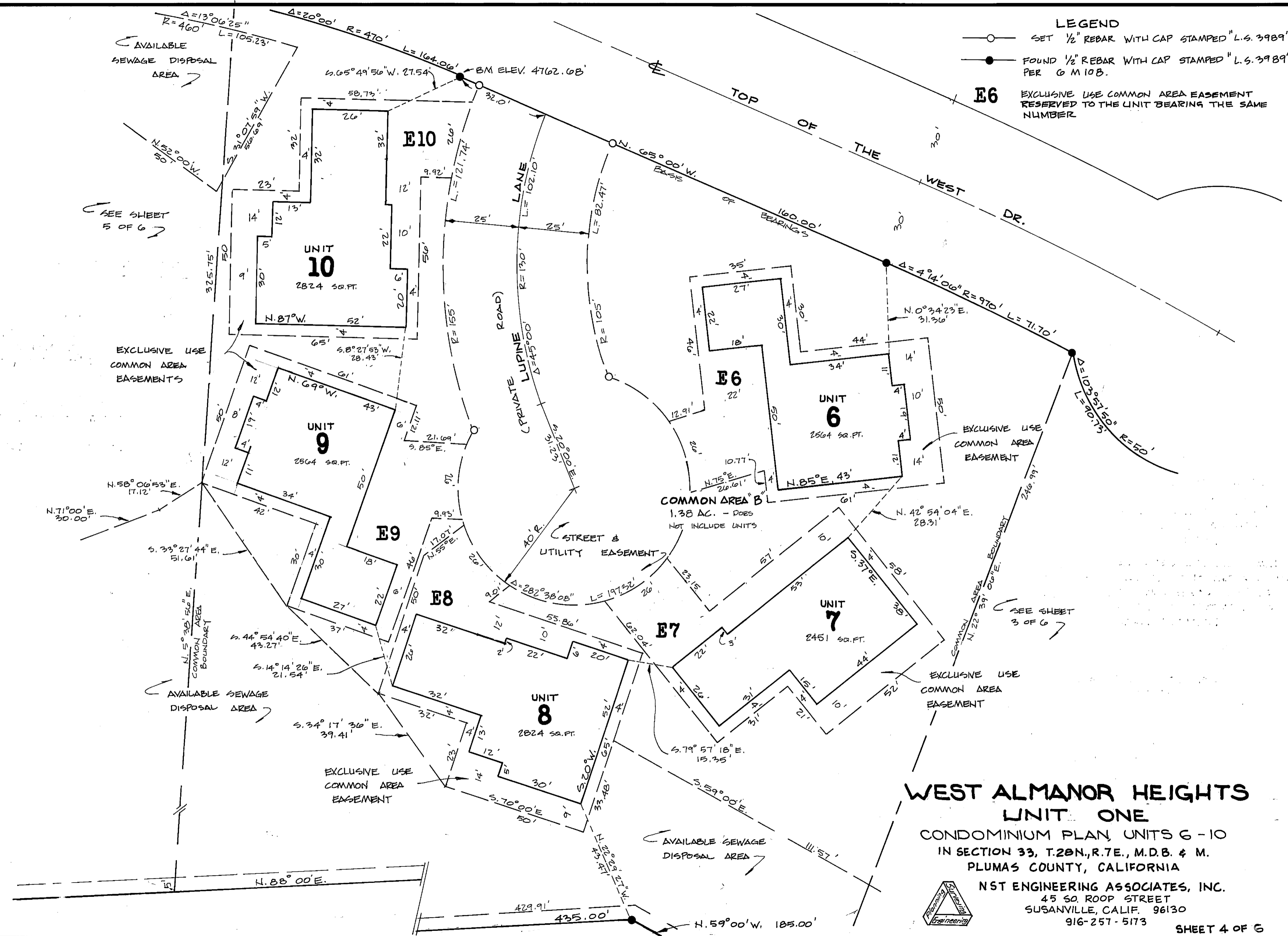


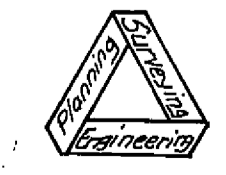
LEGEND

- SET 1/2" REBAR WITH CAP STAMPED "L.S. 3989"
- FOUND 1/2" REBAR WITH CAP STAMPED "L.S. 3989" PER G.M. 10B.
- E6** EXCLUSIVE USE COMMON AREA EASEMENT RESERVED TO THE UNIT BEARING THE SAME NUMBER

SCALE: 1"=20'



**WEST ALMANOR HEIGHTS  
UNIT ONE**  
CONDOMINIUM PLAN, UNITS 6 - 10  
IN SECTION 33, T.28N., R.7E., M.D.B. & M.  
PLUMAS COUNTY, CALIFORNIA



**NST ENGINEERING ASSOCIATES, INC.**  
45 SO. ROOP STREET  
SUSANVILLE, CALIF. 96130  
916-257-5173