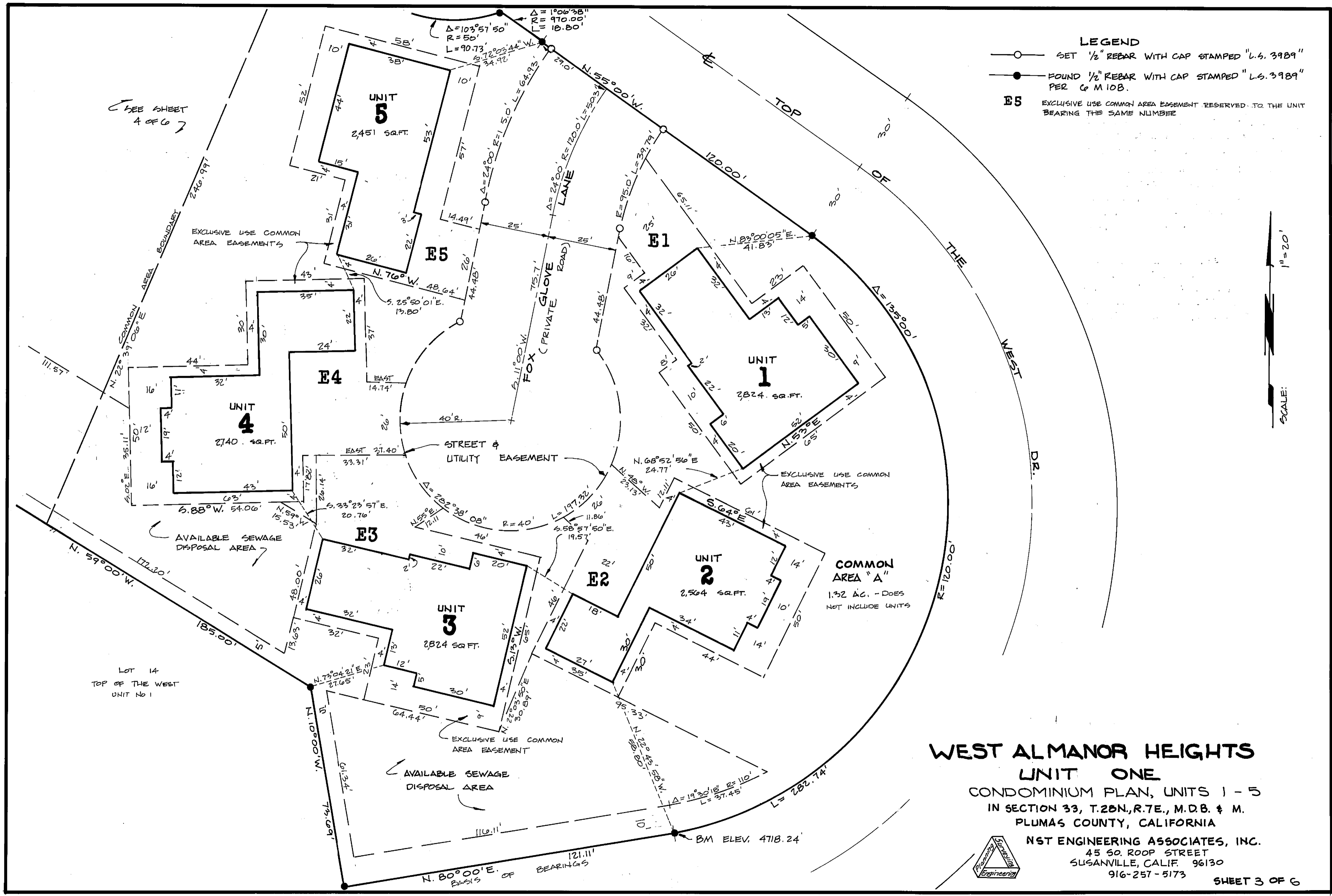
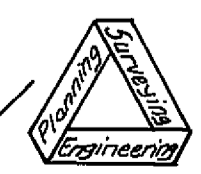


- LEGEND**
- SET 1/2" REBAR WITH CAP STAMPED "L.S. 3989"
 - FOUND 1/2" REBAR WITH CAP STAMPED "L.S. 3989" PER G.M. 108.
 - E5** EXCLUSIVE USE COMMON AREA EASEMENT RESERVED TO THE UNIT BEARING THE SAME NUMBER



**WEST ALMANOR HEIGHTS
UNIT ONE**
CONDOMINIUM PLAN, UNITS 1 - 5
IN SECTION 33, T.28N., R.7E., M.D.B. & M.
PLUMAS COUNTY, CALIFORNIA

NST ENGINEERING ASSOCIATES, INC.
45 SO. ROOP STREET
SUSANVILLE, CALIF. 96130
916-257-5173



90-46