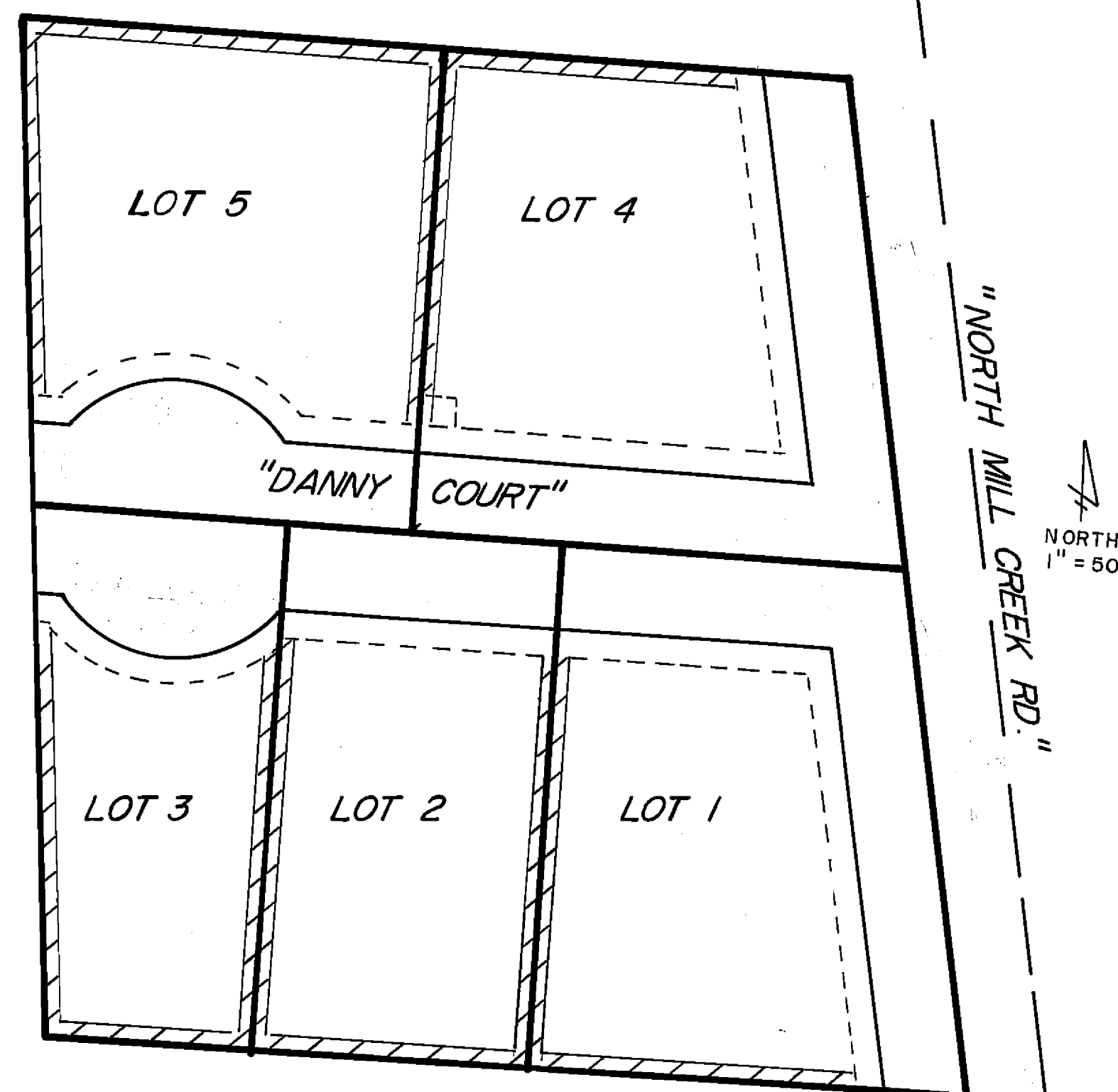
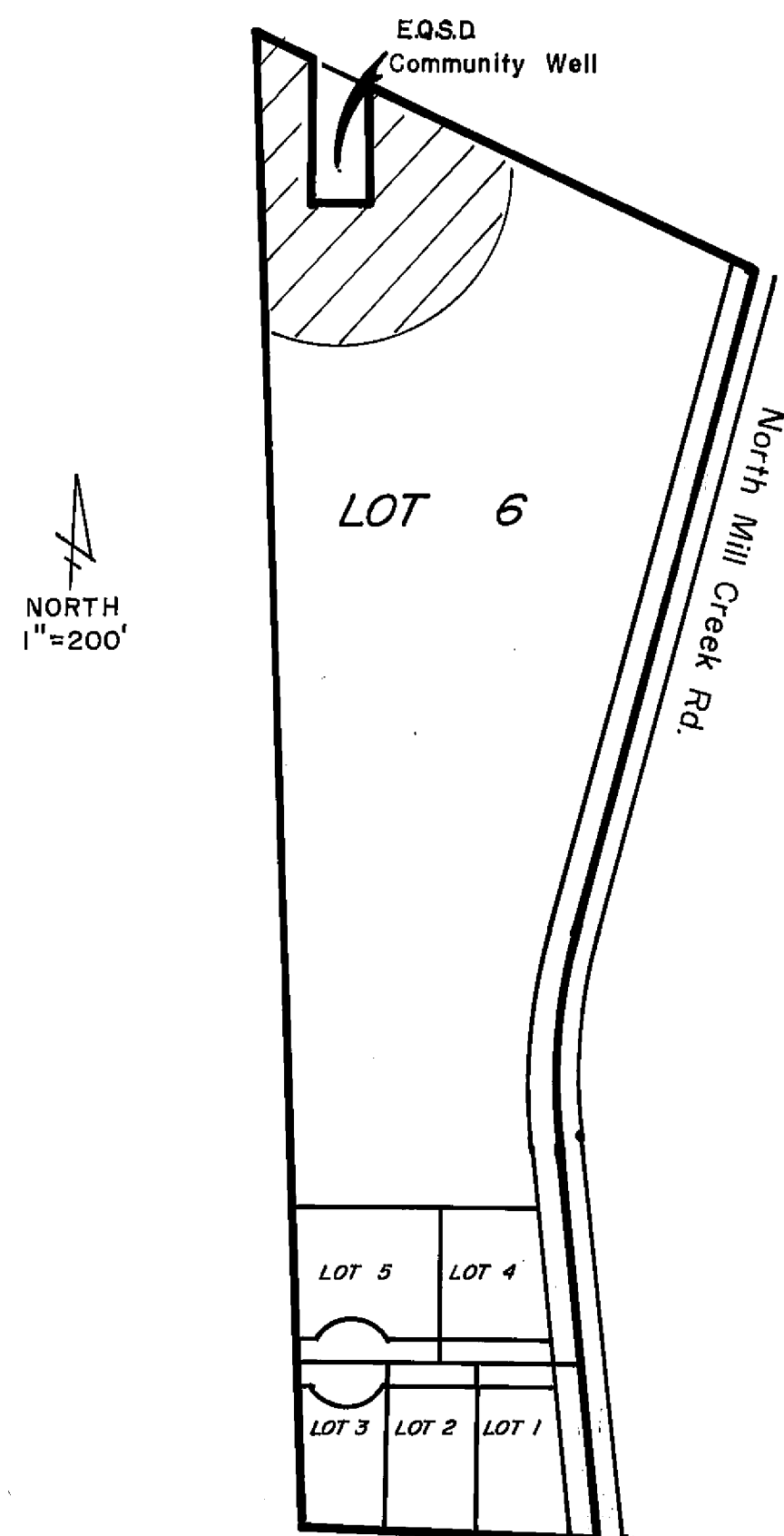


LEGEND:
 \\\ Leach exclusion area



NOTES:

1. The information shown hereon is for informational purposes describing conditions as of filing and is not intended to affect record title interest.
2. The additional information shown hereon is derived from public records or reports and does not imply the correctness or sufficiency of those records or reports by preparer.
3. Private Roads: Danny Court and North Mill Creek Road as shown hereon are private easements not subject to improvement or maintenance by Plumas County. Such easements will not become effective unless and until reservations and grants are included in the respective deeds.
4. Leach Exclusion areas include 5' from lot lines, 200' from the Community Well, and all easements except as approved by the County Sanitarian.

"PLUMAS INDUSTRIAL PARK"**Supplemental Information Sheet**

A Subdivision of 6 lots within a portion of Section 18 of T24N, R10E, MDBM East Quincy, Plumas County, CA.

Owner: Ernest G. Leonhardt
 P.O. Box 96
 Quincy, CA. 95971 283-2336

Engineer: Cliff Brown Engineering & Survey
 2335 Ponderosa
 Quincy, CA. 95971 283-3959