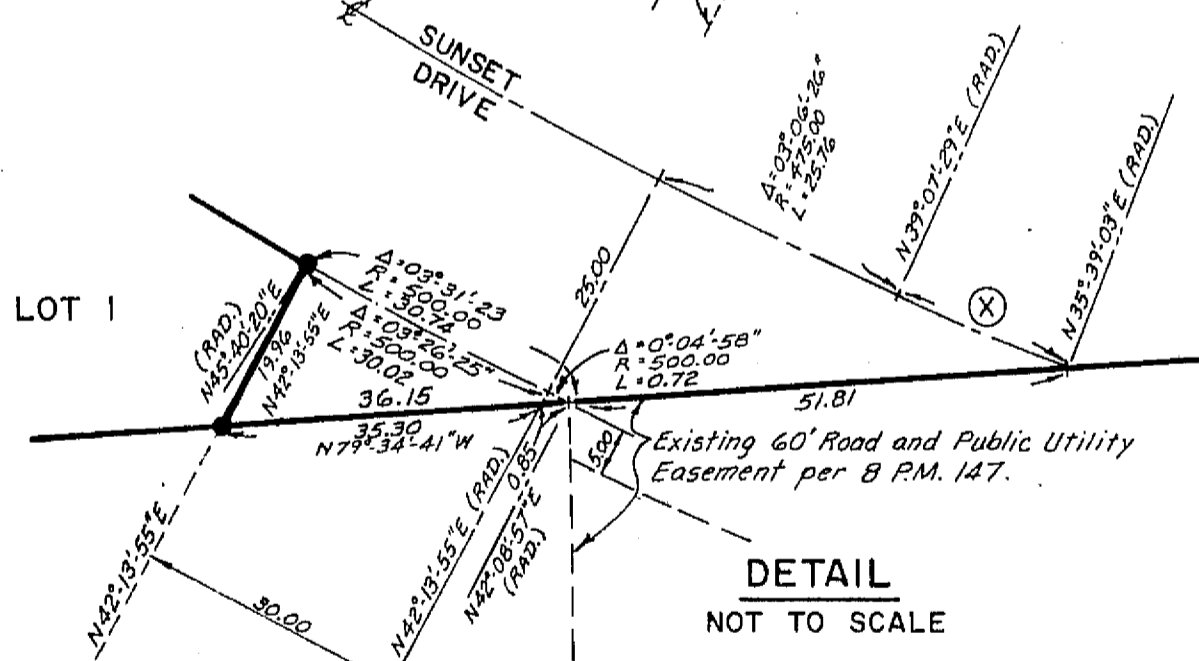
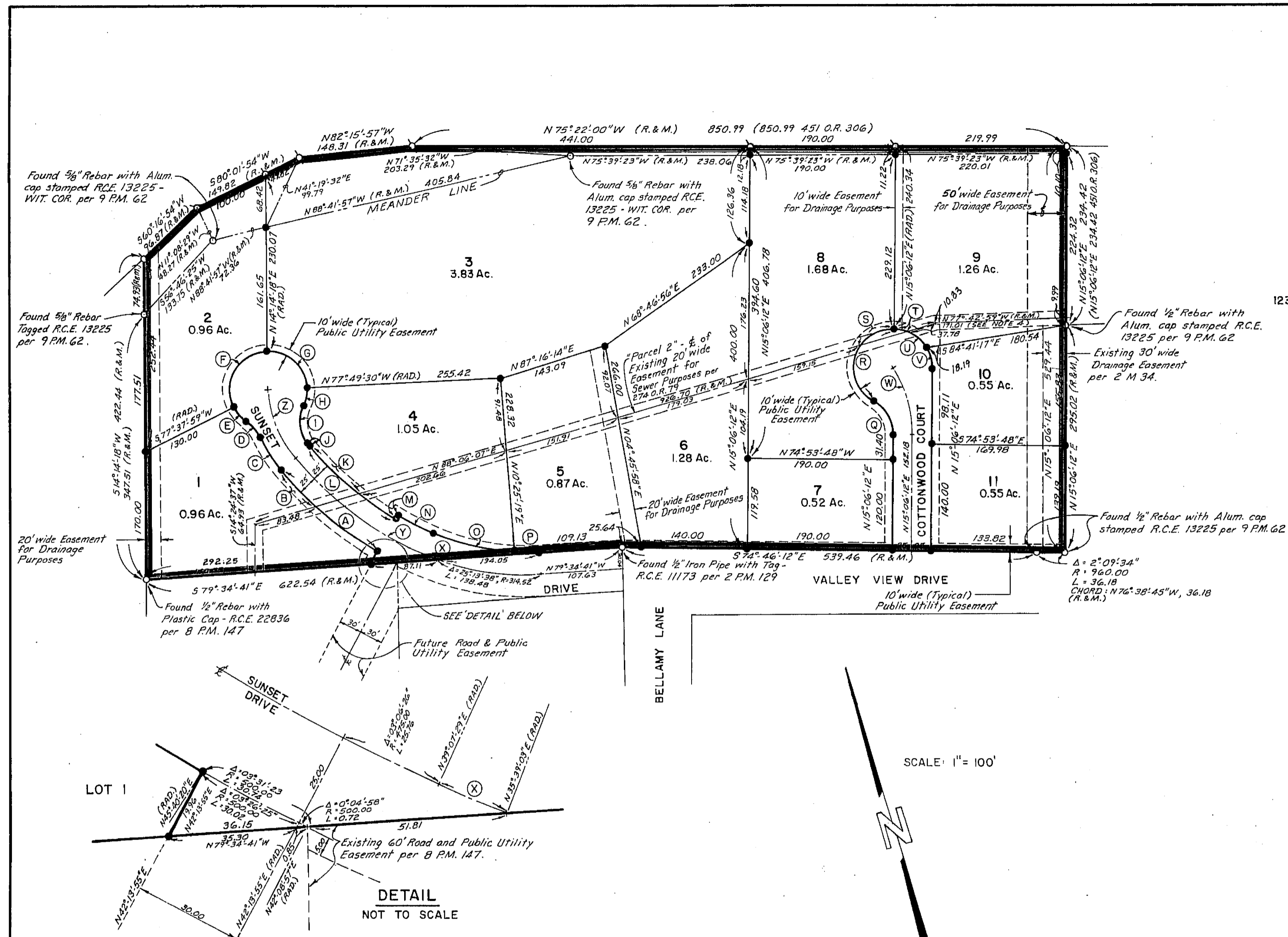


MAP NOTES

- — FOUND MONUMENT AS NOTED.
- — SET 1/2" REBAR WITH 1-1/2" ALUMINUM CAP STAMPED R.C.E. 13225 UNLESS OTHERWISE NOTED. SET 5/8" REBAR WITH 1-1/2" ALUMINUM CAP STAMPED R.C.E. 13225 - WIT. COR. (WITNESS CORNER) ON ALL CORNERS SHOWN SET ON THE MEANDER LINE.
- ⊙ — COMPUTED CORNER LOCATION
- (R & M) — INDICATES RECORD DATA PER 9 P.M. 62 AND MEASURED DATA
- (RAD.) — RADIAL BEARING
- 123 OR. 456 — OFFICIAL RECORD, VOLUME & PAGE
- 1 P.M. 23 — PARCEL MAP, BOOK & PAGE
- 1 M. 23 — MAP, BOOK & PAGE

1. THE BASIS OF BEARINGS FOR THIS MAP IS THE NORTHERLY RIGHT OF WAY LINE OF VALLEY VIEW DRIVE SHOWN AS S74°-46'-12"E IN BOOK 9 OF PARCEL MAPS AT PAGE 62, PLUMAS COUNTY RECORDS.
2. AREA TABULATION: LOTS I THROUGH II — 13.51 ACRES
 ROADS — 0.95 ACRES
 TOTAL AREA — 14.46 ACRES
3. THE PORTION OF SUNSET DRIVE SHOWN WITHIN THE PARCEL TO THE SOUTH OF THIS SUBDIVISION WAS DEDICATED TO THE COUNTY CONCURRENTLY WITH THE FILING OF THIS MAP. BOOK 520 OF OFFICIAL RECORDS, PAGES 352 - 355.
4. 171.01 FEET IS THE COMPUTED DISTANCE ALONG THE RECORD CENTERLINE TO THE INTERSECTION WITH THE EAST PROPERTY LINE. A RECORD DISTANCE OF 170.52 FEET PER 9 P.M. 62 IS TO A POINT WHICH IS A PERPENDICULAR TIE TO THE FOUND CORNER SHOWN AT THE NORTHEAST CORNER OF LOT 10.
5. 3 FOOT WIDE EASEMENTS FOR THE INSTALLATION AND MAINTENANCE OF PUBLIC UTILITIES LIE ALONG THE SIDES OF ALL THE LOTS EXCEPT WHERE DRAINAGE EASEMENTS ARE LOCATED AND ALONG THE LINES BOUNDING THIS SUBDIVISION.



(A) Δ•18°-51'-34", R•500.00, L•164.58	(N) Δ•06°-50'-12", R•445.00, L•53.70
(B) Δ•07°-22'-33", R•500.00, L•64.37	(O) Δ•22°-28'-23", R•284.52, L•111.60
(C) Δ•16°-54'-07", R•175.00, L•51.62	(P) Δ•06°-13'-47", R•284.52, L•30.94
(D) Δ•32°-05'-21", R•50.00, L•28.00	(Q) Δ•60°-00'-00", R•50.00, L•52.36
(E) Δ•28°-17'-21", R•50.00, L•24.69	(R) Δ•150°-00'-00", R•50.00, L•130.90
(F) Δ•116°-36'-19", R•50.00, L•101.76	(S) Δ•49°-07'-31", R•50.00, L•42.87
(G) Δ•87°-56'-12", R•50.00, L•76.74	(T) Δ•15°-07'-21", R•50.00, L•13.20
(H) Δ•26°-23'-04", R•50.00, L•23.02	(U) Δ•57°-17'-44", R•50.00, L•50.00
(I) Δ•62°-43'-14", R•50.00, L•54.73	(V) Δ•32°-42'-16", R•50.00, L•28.54
(J) Δ•01°-18'-28", R•125.00, L•2.85	(W) Δ•32°-27'-38", R•160.00, L•90.65
(K) Δ•11°-16'-32", R•450.00, L•88.56	(X) Δ•03°-28'-26", R•314.52, L•19.07
(L) Δ•18°-34'-11", R•450.00, L•145.85	(Y) Δ•25°-24'-23", R•475.00, L•210.63
(M) N45°-57'-41"E (RAD.), 5.00	(Z) Δ•37°-38'-38", R•150.00, L•98.55

SCALE: 1" = 100'

MEADOW VIEW SUBDIVISION

FOR:
 TERRANCE J. & CAROL L. REESON
 BEING A PORTION OF PARCEL 'A' AS SHOWN ON THE MAP, RECORDED IN BOOK 9 OF P.M. AT PAGES 62 AND 63, PLUMAS COUNTY RECORDS.
 BEING A PORTION OF THE SOUTH HALF OF SECTION 15 T.24N., R.9 E., M.D.B.8M IN PLUMAS COUNTY, CALIFORNIA

BY:
 LARRY FITES ENGINEERING
 P.O. BOX 308
 GRAEAGLE, CALIFORNIA 96103
 R.C.E. 13225