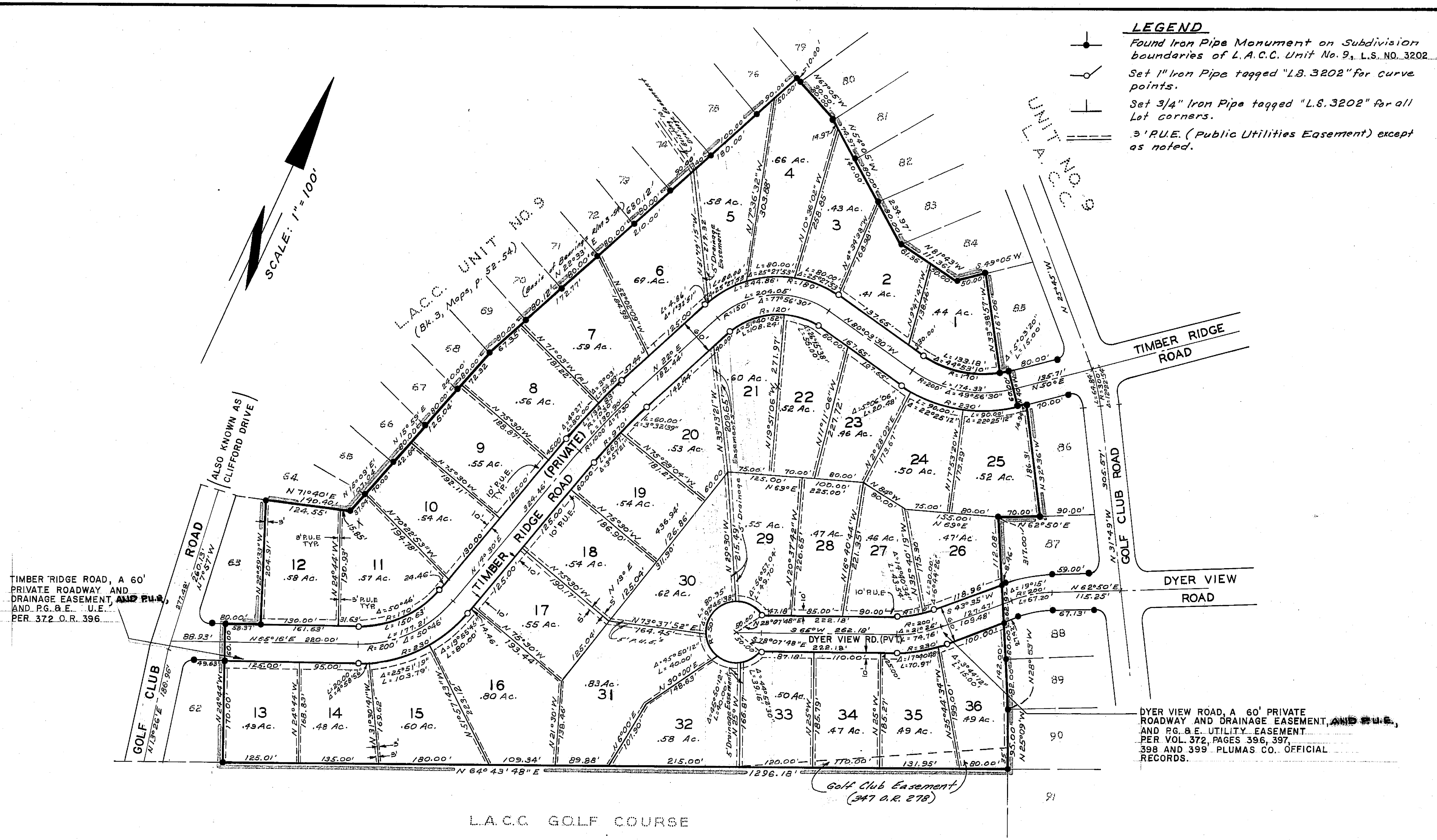


LEGEND

- Found Iron Pipe Monument on Subdivision boundaries of L.A.C.C. Unit No. 9, L.S. NO. 3202
- Set 1" Iron Pipe tagged "L.S. 3202" for Curve points.
- ⊥ Set 3/4" Iron Pipe tagged "L.S. 3202" for all Lot corners.
- 3' P.U.E. (Public Utilities Easement) except as noted.

SCALE: 1" = 100'



TIMBER RIDGE ROAD, A 60' PRIVATE ROADWAY AND DRAINAGE EASEMENT, AND P.U.E. AND P.G. & E. U.E. PER. 372 O.R. 396

DYER VIEW ROAD, A 60' PRIVATE ROADWAY AND DRAINAGE EASEMENT, AND P.U.E. AND P.G. & E. UTILITY EASEMENT PER VOL. 372, PAGES 396, 397, 398 AND 399 PLUMAS CO. OFFICIAL RECORDS.

Golf Club Easement (347 O.R. 278)

LAKE ALMANOR COUNTRY CLUB UNIT NO. 22

IN A PORTION OF SECTIONS 25, & 36, T.28N., R.7E., M.D.B. & M. PLUMAS COUNTY CALIFORNIA

SCALE: 1" = 100'