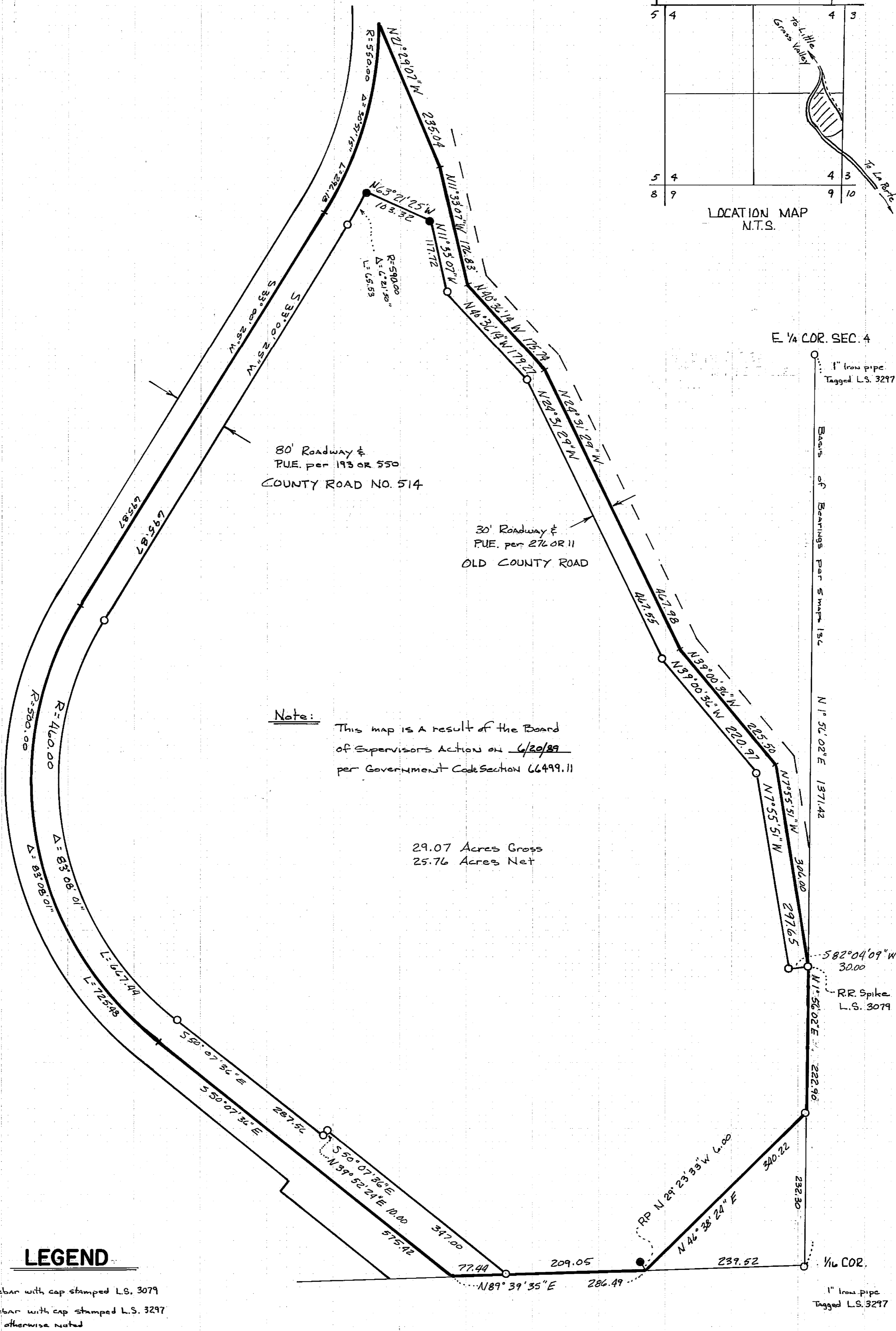


E 1/4 COR. SEC. 4

Scale 1" = 100'



Note: This map is a result of the Board of Supervisors Action on 6/20/89 per Government Code Section 66499.11

29.07 Acres Gross
25.76 Acres Net

LEGEND

- 5/8" Rebar with cap stamped L.S. 3079
- 1/2" Rebar with cap stamped L.S. 3297 or as otherwise noted

**REVERSION TO ACREAGE MAP
for
CHAPMAN WOODS SUBDIVISION**

Within the E 1/4 Sec. 4 T.21N., R.9E., M.8M. Plumas County, California
For Elizabeth J. Chapman Trustee. Requested by the Plumas County Board of Supervisors.
March 1989