

OWNER'S STATEMENT

WE HEREBY CERTIFY THAT WE ARE THE OWNERS OF THE LAND SHOWN ON THIS SUBDIVISION MAP AND CONSENT TO PREPARATION AND RECORDING OF THIS MAP, AND THAT WE ARE THE ONLY PERSONS WHOSE CONSENT IS REQUIRED TO PASS CLEAR TITLE TO SAID LANDS. VALLEY VIEW ROAD AND THE UTILITY EASEMENTS (U.E.) SHOWN ON THIS MAP ARE HEREBY DEDICATED, FOR INSTALLATION, MAINTENANCE AND REPAIR OF ALL ELECTRICAL, TELEPHONE AND CABLE TELEVISION CABLES, DUCTS AND UTILITY FACILITIES, TOGETHER WITH THE RIGHT TO TRIM AND REMOVE, AS OFTEN AS NECESSARY, TREES, LIMBS AND BRUSH.

Leonard Ross
LEONARD ROSS

Elaine Ross
ELAINE ROSS

STATE OF CALIFORNIA)
COUNTY OF PLUMAS) SS.

ON THIS 19th DAY OF May 1989, 1989, BEFORE ME, THE UNDERSIGNED, A NOTARY PUBLIC IN AND FOR SAID COUNTY AND STATE, PERSONALLY APPEARED, LEONARD ROSS AND ELAINE ROSS PERSONALLY KNOWN TO ME (OR PROVED TO ME ON THE BASIS OF SATISFACTORY EVIDENCE) TO BE THE INDIVIDUALS THAT EXECUTED THE WITHIN INSTRUMENT, AND ACKNOWLEDGED TO ME THAT SUCH PARTNERSHIP EXECUTED THE SAME.



Terri L. Carter
NOTARY PUBLIC IN AND FOR SAID COUNTY AND STATE
March 16, 1990
MY COMMISSION EXPIRES:

COUNTY CLERK'S CERTIFICATE

I, ILA DIGGS, CLERK OF THE COUNTY OF PLUMAS, STATE OF CALIFORNIA, AND EX-OFFICIO CLERK OF THE BOARD OF SUPERVISORS OF SAID COUNTY, HEREBY CERTIFY THAT THE HEREIN EMBODIED MAP WAS APPROVED BY SAID BOARD OF SUPERVISORS CONVENED IN A REGULAR MEETING UPON THE 6th DAY OF June, 1989. THE UTILITY EASEMENTS SHOWN ON THE MAP WERE ACCEPTED FOR THE USES NOTED.

DATE: June 6, 1989

Ila Diggs
ILA DIGGS
COUNTY CLERK

COUNTY TAX COLLECTOR'S CERTIFICATE

I, BARBARA J. COATES, TAX COLLECTOR OF THE COUNTY OF PLUMAS, STATE OF CALIFORNIA, DO HEREBY CERTIFY THAT THERE ARE NO TAX LIENS AGAINST THE LOTS AS SHOWN HEREON, FOR UNPAID COUNTY, MUNICIPAL, OR LOCAL TAXES OR SPECIAL ASSESSMENTS COLLECTED AS TAXES, EXCEPT TAXES OR ASSESSMENTS NOT YET PAYABLE. TAXES OR ASSESSMENTS WHICH ARE A LIEN BUT NOT YET PAYABLE, ARE ESTIMATED TO BE IN THE AMOUNT OF \$ 161.00.

DATED: 6-6-89

Barbara J. Coates by: Ginny Schoof, asst.
BARBARA J. COATES
PLUMAS COUNTY TAX COLLECTOR

COUNTY SURVEYOR'S CERTIFICATE

I HAVE EXAMINED THIS MAP AND FIND IT IS SUBSTANTIALLY THE SAME AS IT APPEARED ON THE TENTATIVE MAP AND ANY APPROVED ALTERATIONS THEREOF. ALL PROVISIONS OF THE SUBDIVISION MAP ACT AND ANY LOCAL ORDINANCES APPLICABLE AT THE TIME OF APPROVAL OF THE TENTATIVE MAP HAVE BEEN COMPLIED WITH; AND I AM SATISFIED THAT THE MAP IS TECHNICALLY CORRECT.

DATED: 6/13/89 SIGNED: Lawrence J. Brock
LAWRENCE J. BROCK R.C.E. 13528
COUNTY SURVEYOR

COUNTY RECORDER'S CERTIFICATE

FILED THIS 22nd DAY OF JUNE, 1989 AT 11:42 A.M. IN BOOK 6 OF MAPS, AT PAGE 88 & 89, AT THE REQUEST OF THE COUNTY ENGINEER.

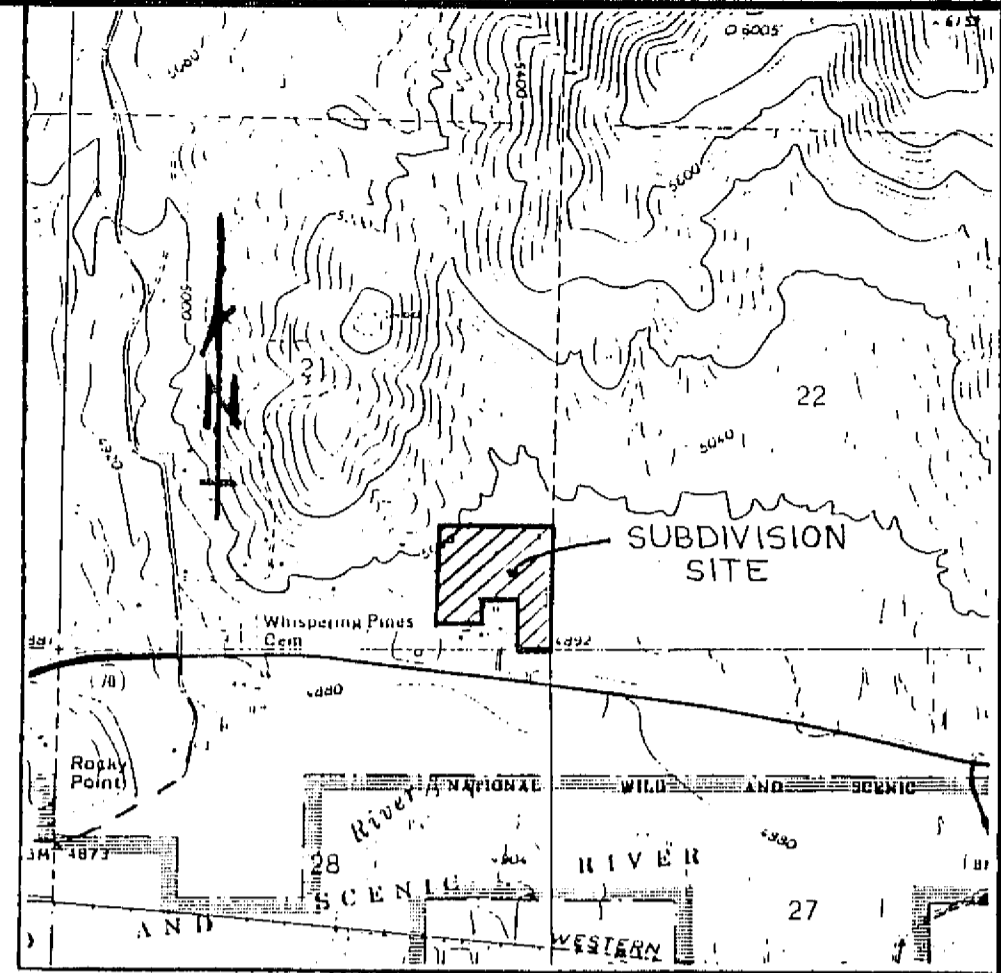
FEE: \$7.00
FILE NO.: 3744

ILA DIGGS
COUNTY RECORDER
BY: Ruth Cammack
DEPUTY

ENGINEER'S STATEMENT

THIS MAP AND THE SURVEY PERFORMED THEREFOR IN JUNE 1988, WERE MADE BY ME OR UNDER MY DIRECTION. THE SURVEY IS TRUE AND COMPLETE AS SHOWN. ALL THE MONUMENTS SHOWN HEREON ARE OF THE CHARACTER AND OCCUPY THE POSITIONS INDICATED. THE MONUMENTS ARE SUFFICIENT TO ENABLE THE SURVEY TO BE RETRACED.

Larry A. Fites
LARRY A. FITES
R.C.E. 13225



LOCATION MAP
SCALE: 1" = 2000'

VALLEY VIEW SUBDIVISION

FOR
LEONARD AND ELAINE ROSS
BEING A PORTION OF THE SE 1/4 OF
SECTION 21, T.23N., R.14E., M.D.M.
IN PLUMAS COUNTY, CALIFORNIA

LARRY FITES ENGINEERING
P.O. BOX 308
GRAEAGLE, CALIFORNIA 96103
R.C.E. 13225