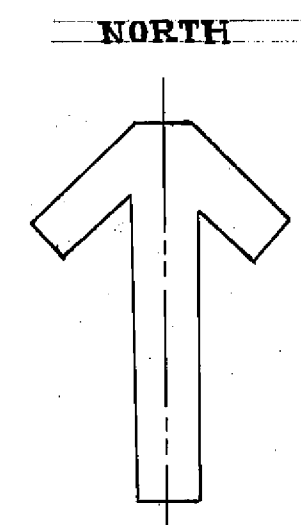
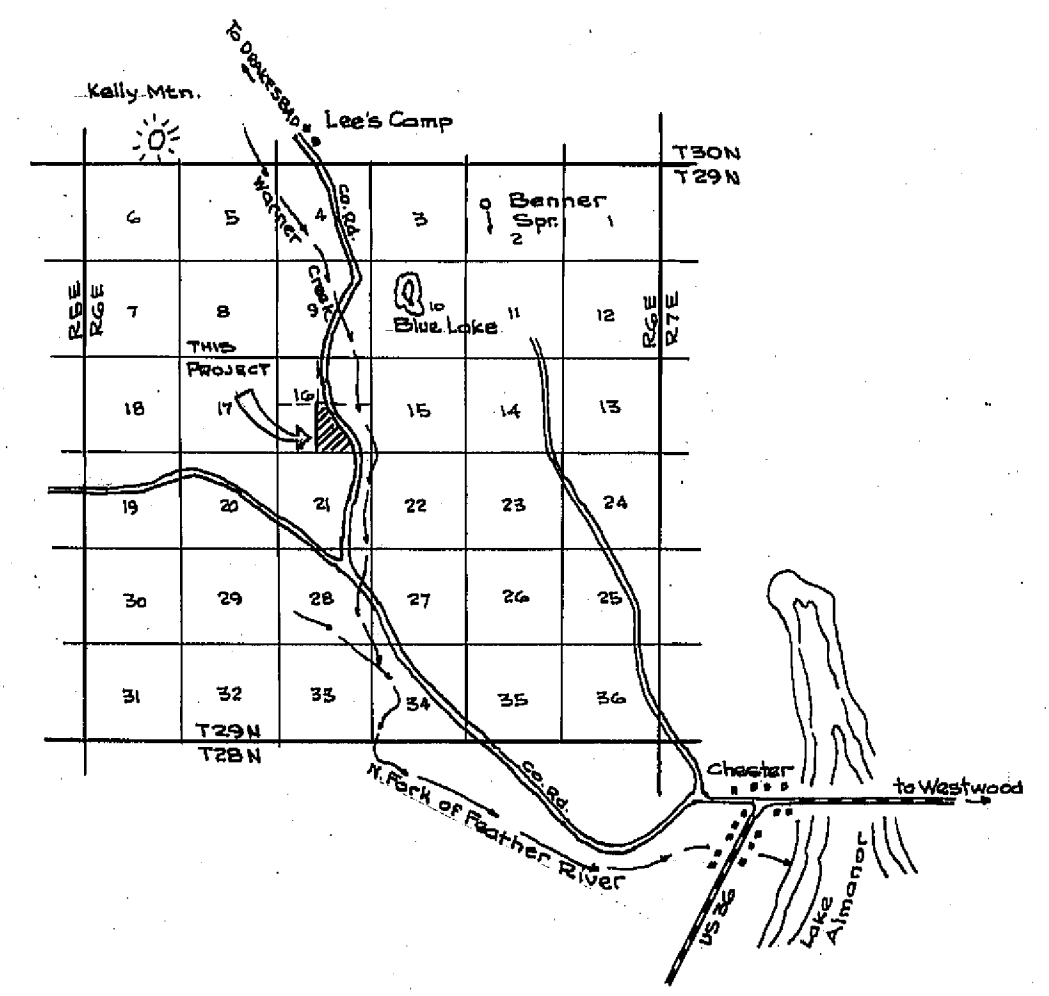


Found 1/4" ip. in MOR tagged RCE 22148 for ctr. of Sec. 16, per 6RS 19.

Found 2" ip. and brass cap for E 1/4 cor. of Sec. 16, per 5RS 115 & 6RS 19.



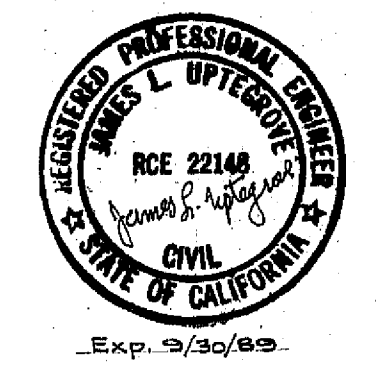
SCALE: 1"=100'
Basis of bearings is the record bearing (S89°52'W) for the S. line of Sec. 16 from 6RS 19.



VICINITY MAP
SCALE: 1"=2 MI

LEGEND

- Found point per Maps 6RS 19, 5RS 115 as noted
 - ▲ Found untagged 1/2" or 3/4" ip. per Maps 2/48, tagged them RCE 22148
 - Set 3/4" ip. tagged RCE 22148
- NOTE:
RIM DRIVE is a 60' private road easement and a 60' public utility easement.

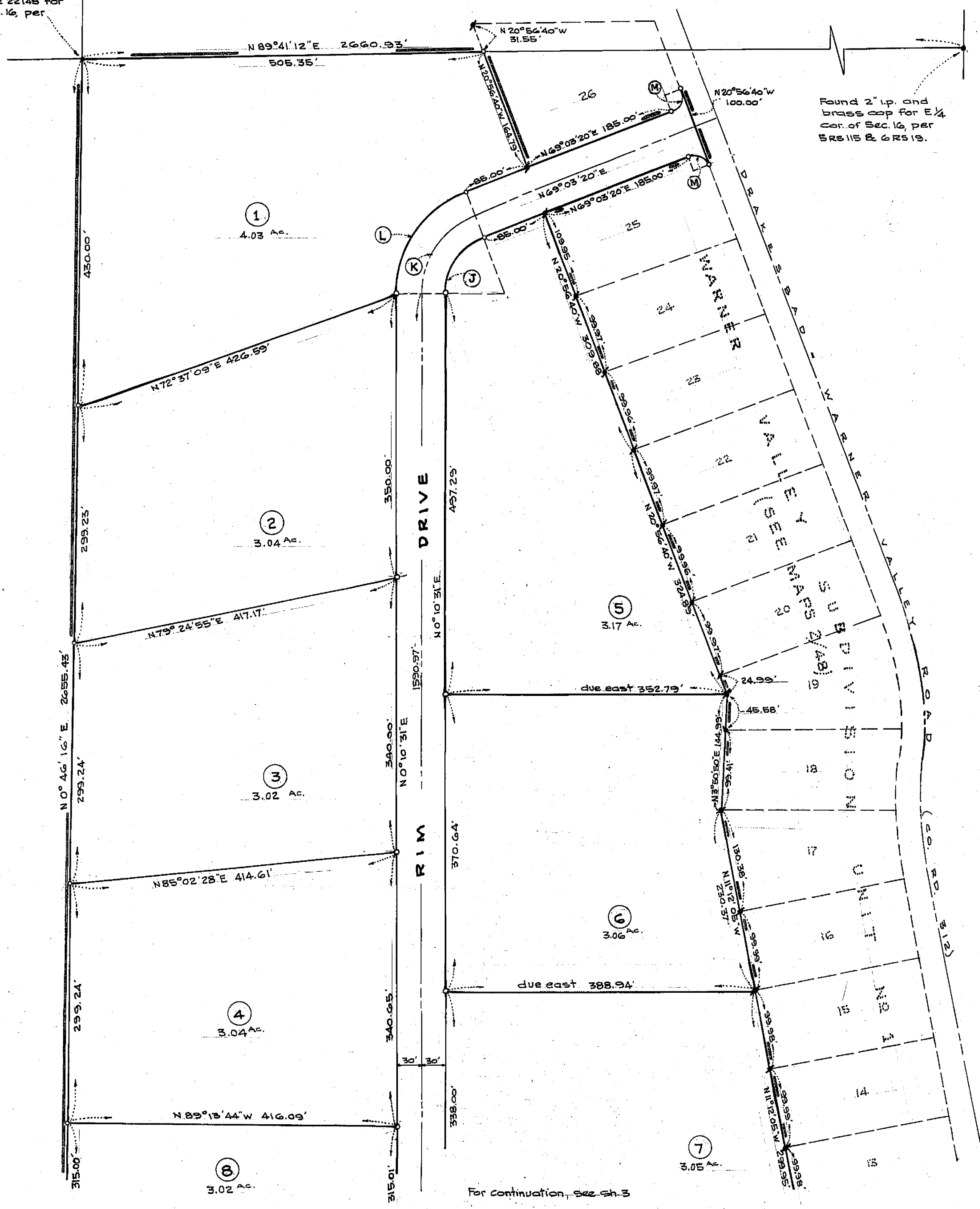


WARNER VALLEY WEST
SUBDIVISION

IN THE
SE 1/4 OF SEC. 16, T29N, R6E, MDM.
PLUMAS COUNTY, CALIFORNIA

FOR
JAMES R. & LOIS L. LEE

SCALE: 1"=100' OCT. 1988 SH. 2 OF 5



For continuation, see Sh. 3