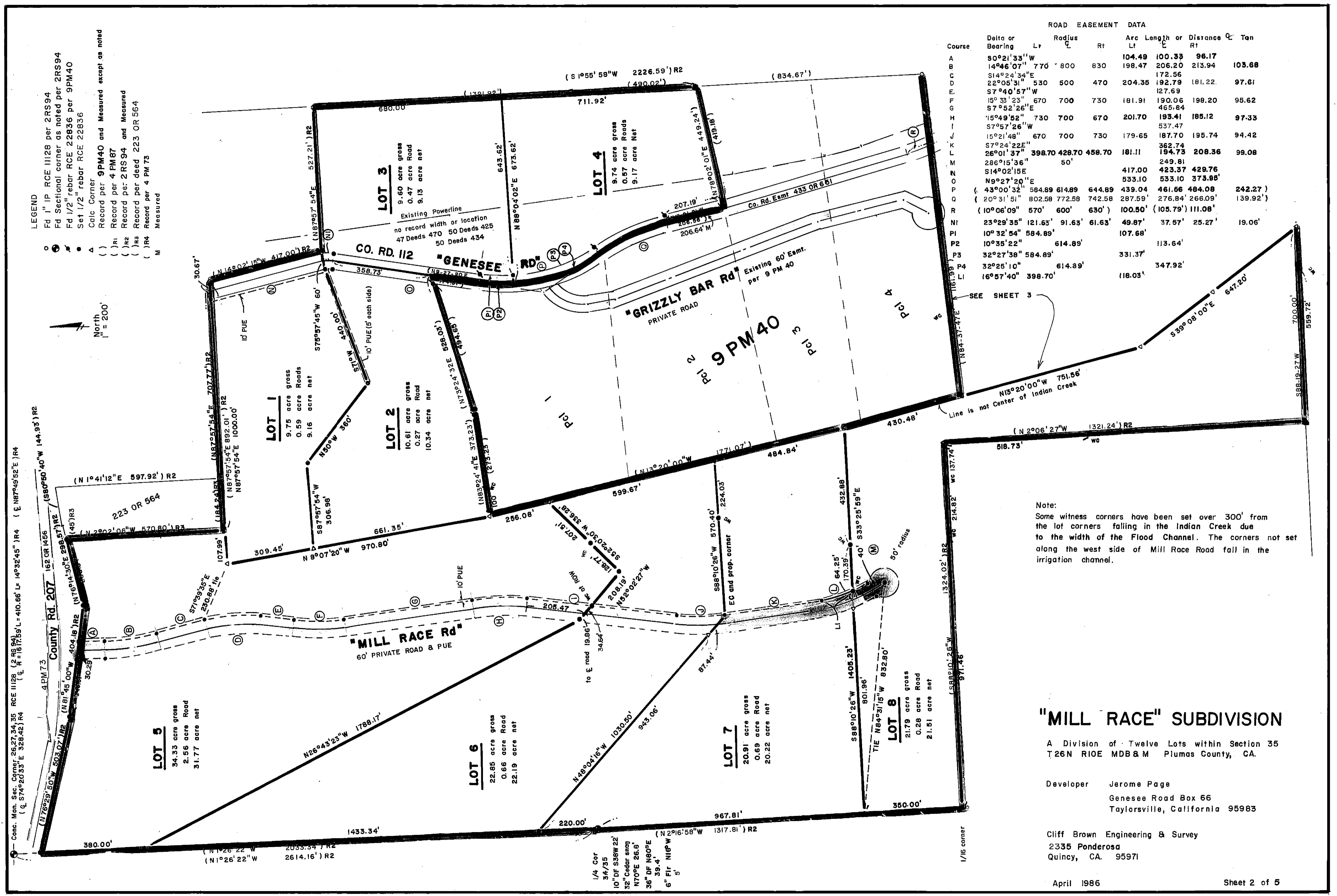


- LEGEND**
- 1" IP RCE III128 per 2RS94
  - Fd Sectional corner as noted per 2RS94
  - Fd 1/2" rebar RCE 22836 per 9PM40
  - Set 1/2" rebar RCE 22836
  - Calc Corner
  - Record per 9PM40 and Measured except as noted
  - ( ) Record per 4 PM 87
  - ( ) R1 Record per 2RS94 and Measured
  - ( ) R2 Record per deed 223 OR 564
  - ( ) R3 Record per 4 PM 73
  - ( ) R4 Measured
  - M Measured

**ROAD EASEMENT DATA**

Course	Delta or Bearing	Lt	Radius	Rt	Arc Length or Distance Lt	Distance Rt	C	Tan
A	90°21'33"W				104.49	100.33		96.17
B	14°46'07"	770	800	830	198.47	206.20	213.94	103.68
C	314°24'34"E				172.56			
D	22°05'31"	530	500	470	204.35	192.79	181.22	97.61
E	57°40'57"W				127.69			
F	15°33'23"	670	700	730	181.91	190.06	198.20	95.62
G	57°52'26"E				465.84			
H	15°49'52"	730	700	670	201.70	193.41	185.12	97.33
I	57°57'26"W				537.47			
J	15°21'48"	670	700	730	179.65	187.70	195.74	94.42
K	57°24'22"E				362.74			
L	26°01'37"	398.70	428.70	458.70	181.11	194.73	208.36	99.08
M	286°15'36"		50'		249.81			
N	S14°02'15"E				417.00	423.37	429.76	
O	N9°27'20"E				533.10	533.10	373.88'	
P	( 43°00'32"	584.89	614.89	644.89	439.04	461.56	484.08	242.27'
Q	( 20°31'51"	802.58	772.58	742.58	287.59'	276.84'	266.09'	139.92'
R	( 10°06'09"	570'	600'	630'	100.50'	( 105.79'	111.08'	
NI	23°29'35"	121.63'	91.63'	61.63'	49.87'	37.57'	25.27'	19.06'
PI	10°32'54"	584.89'			107.68'			
P2	10°35'22"	614.89'				113.64'		
P3	32°27'38"	584.89'			331.37'			
P4	32°25'10"	614.89'				347.92'		
LI	16°57'40"	398.70'			118.03'			



Note:  
Some witness corners have been set over 300' from the lot corners falling in the Indian Creek due to the width of the Flood Channel. The corners not set along the west side of Mill Race Road fall in the irrigation channel.

**"MILL RACE" SUBDIVISION**

A Division of Twelve Lots within Section 35  
T26N RIOE MDB & M Plumas County, CA.

Developer Jerome Page  
Genesee Road Box 66  
Taylorsville, California 95983

Cliff Brown Engineering & Survey  
2335 Ponderosa  
Quincy, CA. 95971

April 1986

Sheet 2 of 5