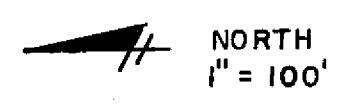
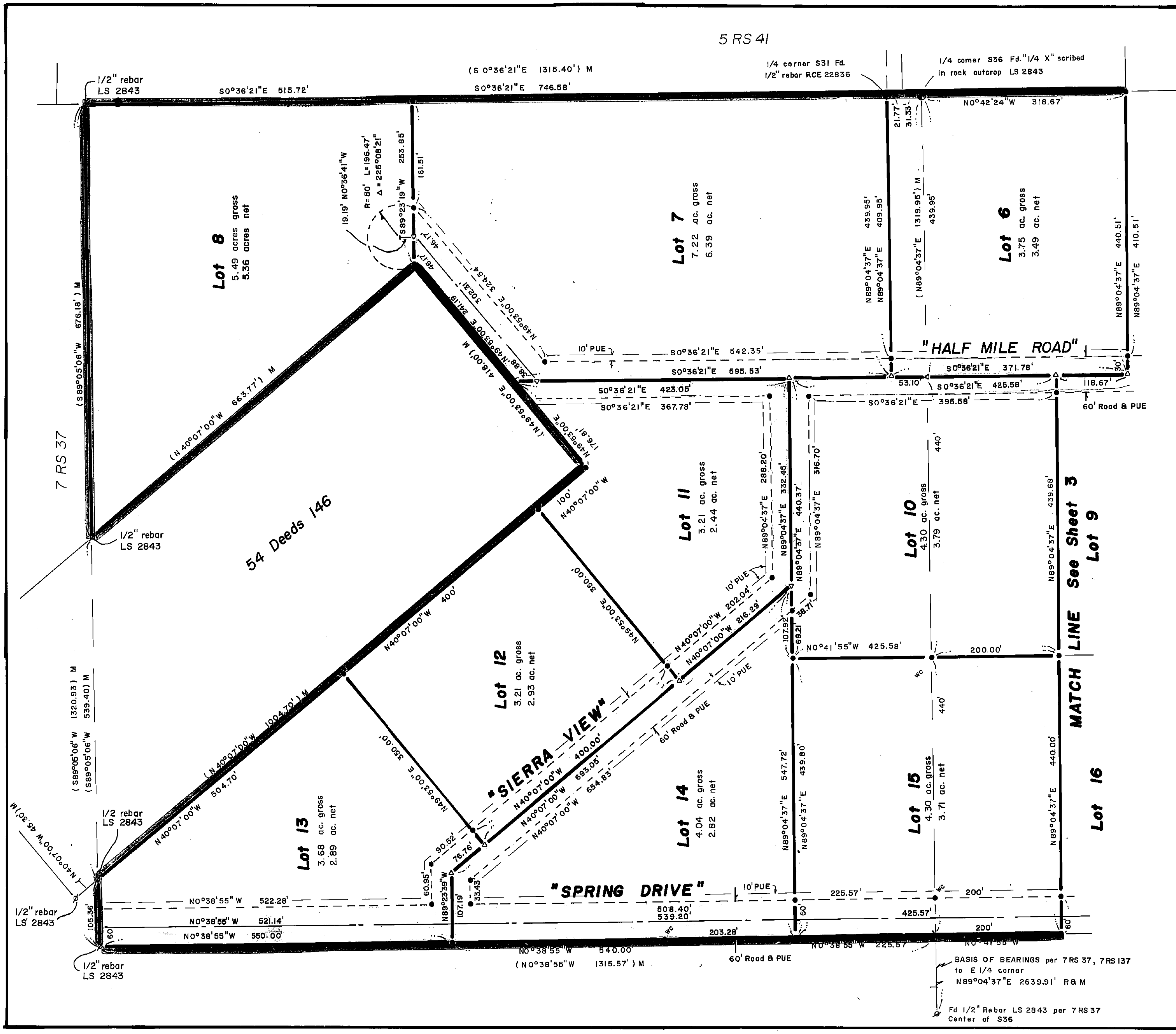


5 RS 41



- LEGEND**
- () Record per 7 RS 137
 - (-A) Record per 3 RS 15
 - (-F) Record per 5 M 62
 - (-S) Record per 6 Maps *See*
 - M Measured
 - o Fd. nail tagged LS 3297
 - Set 1/2" rebar RCE 22836
 - △ Fd. 1/2" rebar RCE 22836 per 6 Maps *See*, 7 RS 137
 - △ Calc. point
 - wc Witness Corner
 - ⊗ Fd. 1/2" Rebar LS 2843 per 7 RS 37 or as noted.

NOTES:

I. Subdivision Summary

Net acres	47.45
Roads	7.24
Area of division	54.69

SIERRA VIEW SUBDIVISION-UNIT 2

A portion of Section 36, T23N, R16E MDB & M near Chilcoot, Plumas County, California.

Developer GIANT QUICKSILVER CORPORATION
573 Riveria Circle
Larkspur, CA 94939

Engineer Cliff Brown Engineering & Survey
Rt. 1 Box 480B
Quincy, CA 95971

May 1986

Sheet 2 of 4