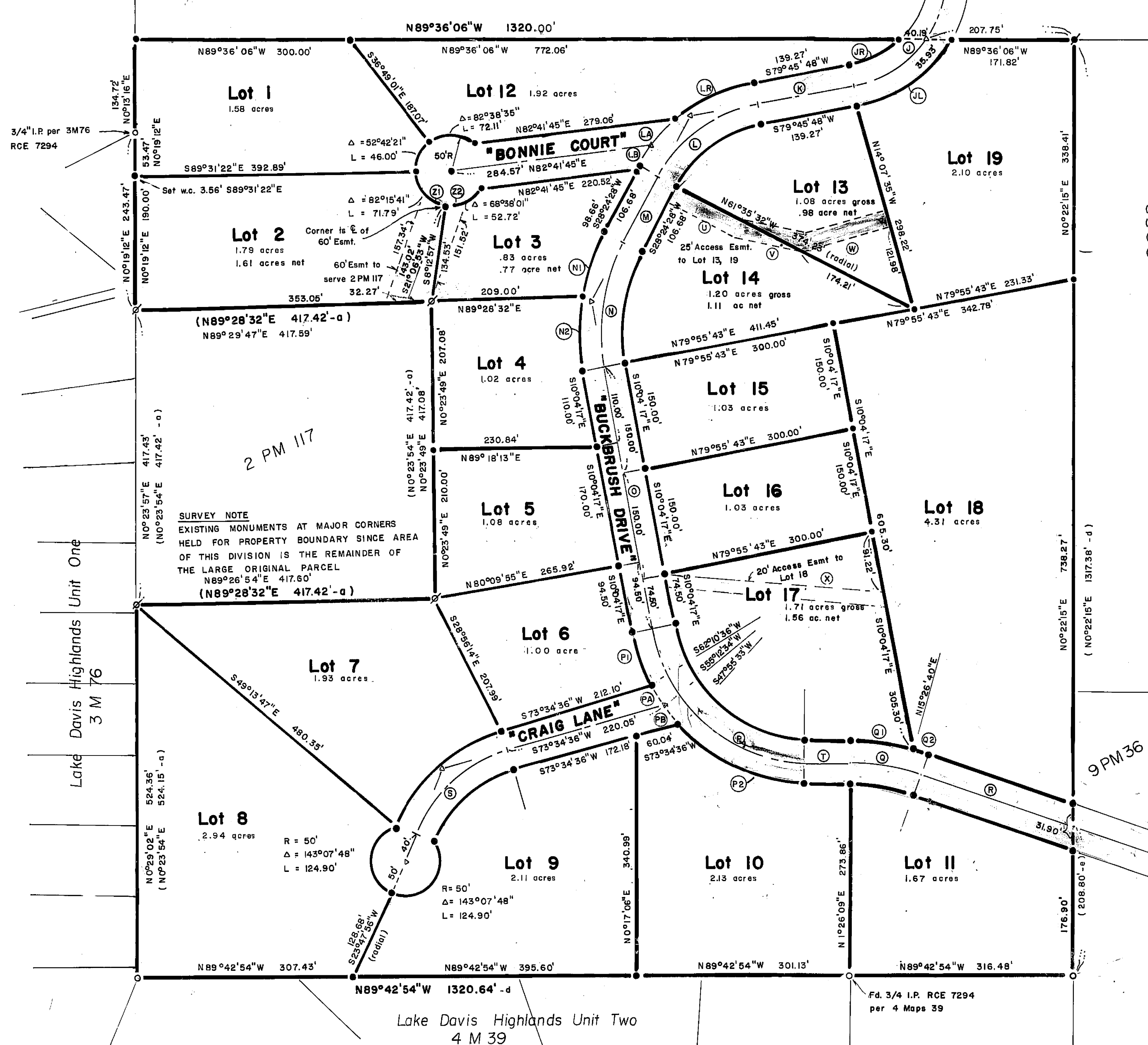


See Sheet 2 for "Other Lands" and Basis of Bearings



NORTH
1" = 100'

- LEGEND**
- Fd 3/4" I.P. RCE 7294 per 3 RS 108 or as noted
 - Fd 3/4" I.P. RCE 292 per 2 PM 117
 - ⊙ Fd 1/2" Rebar RCE 22836 per 7 RS 51
 - Set 1/2" Rebar RCE 22836
 - △ Computed Point
 - (-a) Record per 2 PM 117
 - (-c) Record per 3 RS 108
 - (-d) Record & Measured per 7 RS 51
 - (-e) Record & Measured per 9 PM 36

ROAD EASEMENT DATA

COURSE	DELTA OR BEARING	RADIUS			ARC LENGTH OR DIST.			∠ TAN
		LT	∠	RT	LT	∠	RT	
J	42°36'13"		161.97'			120.44'		
JL	49°02'32"	191.97'			164.32'			
JR	32°06'36"			131.97'			73.96'	
K	S79°45'48"W				139.27'	139.27'	139.27'	
L	S1°21'20"	170'	200'	230'	152.37'	179.26'	206.15'	96.16'
LR	S33°21'48"			230'			133.93'	
M	S28°24'26"W				106.68'	106.68'	106.68'	
N	S38°28'46"	240'	270'	300'	161.18'	181.33'	201.48'	94.23'
NI	S19°42'07"			300'			103.16'	
N2	S18°46'39"			300'			98.32'	
O	S10°04'17"E				374.50'	374.50'	374.50'	
P	S78°29'34"	195'	225'	255'	267.14'	308.24'	349.33'	183.81'
P1	S17°45'07"			255'			79.00'	
P2	S46°28'24"			255'			206.91'	
Q	S18°47'49"	343.25'	313.25'	287.25'	112.61'	102.77'	92.93'	51.85'
Q1	S14°00'31"				83.92'			
Q2	S4°47'18"	343.25'			28.69'			
R	S69°46'02"E				212.72'	223.54'	234.38'	
S	S49°46'40"	184.18'	214.18'	244.18'	160.01'	186.07'	212.14'	99.37'
T	S88°33'51"E				65.83'	65.83'	65.83'	
U	S86°35'32"E				100.00'		103.17'	
V	S47°06'56"E				82.72'		100.00'	
W	N74°0'				114.43'		128.44'	
X	S84°27'21"E				331.36'		331.36'	
Z1	S34°59'15"		50'			30.53'		
Z2	S42°34'09"		50'			37.15'		
La	S10°24'10"			230'			41.76'	
Lb	S7°35'22"			230'			30.46'	
Pa	S6°58'02"			255'			31.00'	
Pb	S7°17'01"			255'			32.42'	

SUBDIVISION SUMMARY

Lots, net	31.88 acres
Road Easmts.	4.07 acres
Total Area	35.95 acres

WHITETHORN HEIGHTS UNIT 2

A Planned Development of a portion of Section 12 T23N R13E MDBM Plumas County, California

developer ROGER and BONNIE CLARK
PO Box 518
Portola, CA 96122

CLIFF BROWN Engineering & Survey
Rt 1 Box 480 B
Quincy, CA 95971