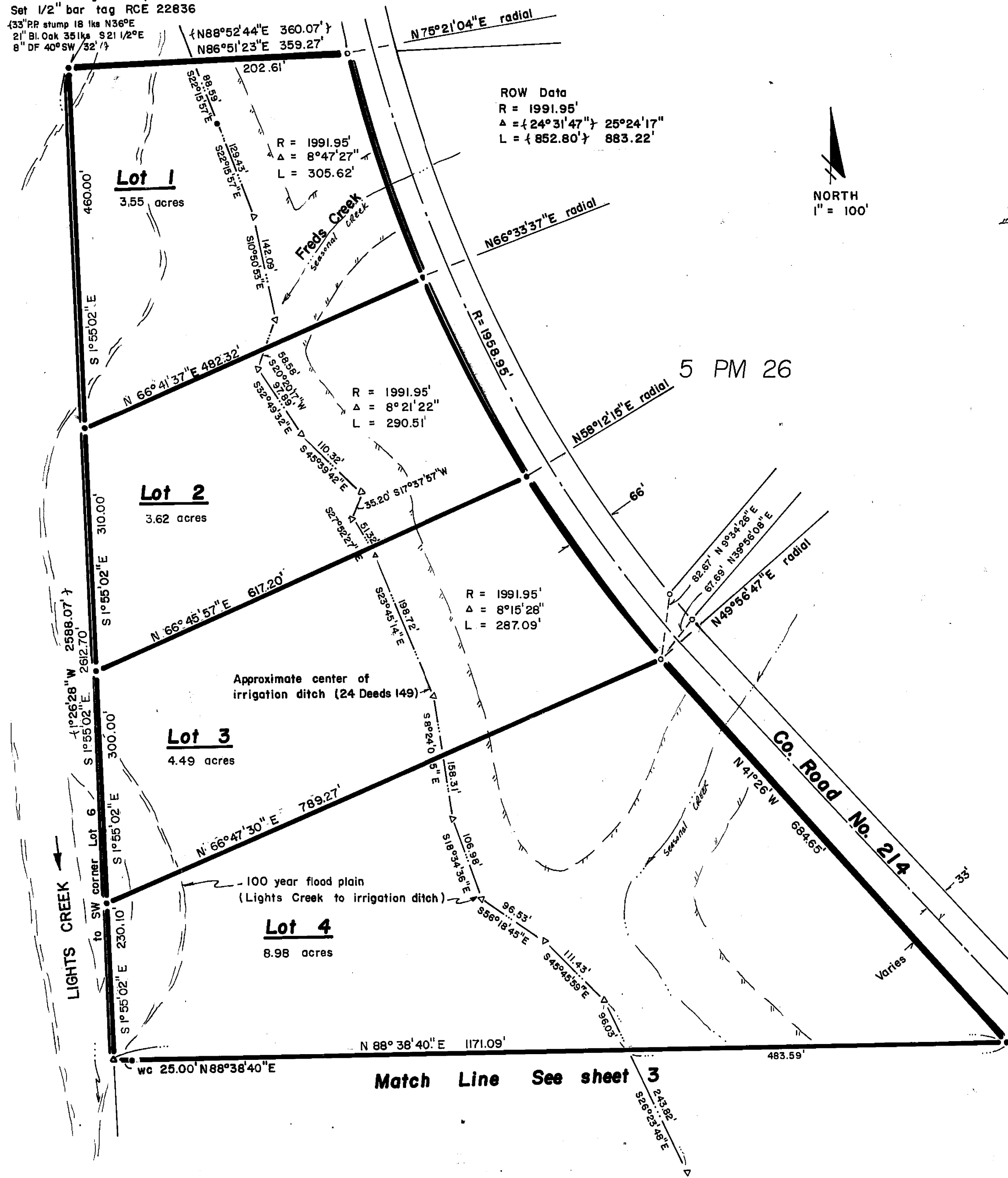


Found 10"x12"x10" stone in M.O.R.
and 3 bearing trees per 5 PM 26
Set 1/2" bar tag RCE 22836
33" RR stump 18 lbs N36°E
21" Bl. Oak 35 lbs S21 1/2°E
8" DF 40°SW 32' 1/2"



Lights Creek Meadows

A Planned Development of six Lots

Portion of NW 1/4 of Section 31, T27N R11E MDM
Plumas Co. Calif.