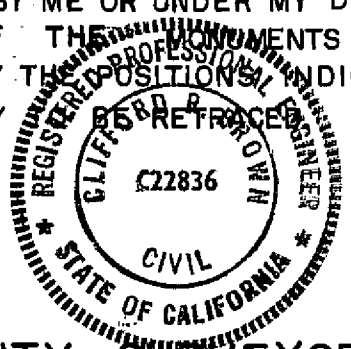


ENGINEER'S CERTIFICATE

THIS MAP AND THE SURVEY PERFORMED THEREFORE IN JULY 1983, WERE MADE BY ME OR UNDER MY DIRECTION.. THE SURVEY IS TRUE AND COMPLETE AS SHOWN. ALL OF THE EASEMENTS SHOWN HEREON ARE OF THE CHARACTER AND OCCUPY THE POSITIONS INDICATED AND ARE SUFFICIENT TO ENABLE THE SURVEY



Clifford R. Brown
CLIFFORD R. BROWN RCE 22836

COUNTY SURVEYOR'S CERTIFICATE

I HAVE EXAMINED THIS MAP AND FIND IT IS SUBSTANTIALLY THE SAME AS IT APPEARED ON THE TENTATIVE MAP AND ANY APPROVED ALTERATIONS THEREOF. ALL PROVISIONS OF THE SUBDIVISION MAP ACT AND LOCAL ORDINANCES APPLICABLE AT THE TIME OF APPROVAL OF THE TENTATIVE MAP HAVE BEEN COMPLIED WITH, AND I AM SATISFIED THAT THE MAP IS TECHNICALLY CORRECT.

DATED: Dec. 13, 1983
Lawrence J. Brock by R. Tom Slomton
LAWRENCE J. BROCK RCE 13528
PLUMAS COUNTY ENGINEER

COUNTY TAX COLLECTOR'S CERTIFICATE

I, BARBARA J. COKOR, TAX COLLECTOR OF THE COUNTY OF PLUMAS, STATE OF CALIFORNIA, DO HEREBY CERTIFY THAT THERE ARE NO TAX LIENS AGAINST THE LOTS AS SHOWN HEREON FOR UNPAID COUNTY, MUNICIPAL OR LOCAL TAXES OR SPECIAL ASSESSMENTS COLLECTED AS TAXES, EXCEPT TAXES OR ASSESSMENTS NOT YET PAYABLE. TAXES OR ASSESSMENTS WHICH ARE A LIEN BUT NOT YET PAYABLE ARE ESTIMATED TO BE IN THE AMOUNT OF \$ NONE.

DATED: 12/12/83
Barbara J. Cokor
BARBARA J. COKOR
PLUMAS COUNTY TAX COLLECTOR

COUNTY CLERK'S CERTIFICATE

I, ILA DIGGS, CLERK OF THE COUNTY OF PLUMAS, STATE OF CALIFORNIA AND EX-OFFICIO CLERK OF THE BOARD OF SUPERVISORS OF SAID COUNTY, HEREBY CERTIFY THAT THE HEREIN EMBODIED MAP WAS APPROVED BY THE SAID BOARD OF SUPERVISORS CONVENED IN REGULAR MEETING UPON THE 13th DAY OF December, 1983.

DATED: December 15, 1983
Ila Diggs
ILA DIGGS
PLUMAS COUNTY CLERK

COUNTY RECORDER'S CERTIFICATE

FILED THIS 15th DAY OF December, 1983, AT 1:22 P.M., IN BOOK 5 OF MAPS, AT PAGE 119, AT THE REQUEST OF THE COUNTY ENGINEER.

FEE: \$9.00 ILA DIGGS, COUNTY RECORDER
FILE NO. 5612 by Patricia Locoy
DEPUTY

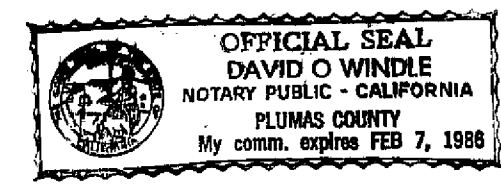
OWNER'S CERTIFICATE

I HEREBY CERTIFY THAT I AM THE OWNER OF THE LAND SHOWN ON THIS SUBDIVISION MAP AND CONSENT TO THE PREPARATION AND RECORDING OF THIS MAP, AND THAT I AM THE ONLY PERSON WHOSE CONSENT IS REQUIRED TO PASS CLEAR TITLE OF SAID LAND.
THE EASEMENTS SHOWN ON THIS MAP TO BE CREATED BY RECORDATION THEREOF ARE CREATED WITH MY CONSENT AND ARE HEREBY DEDICATED OR DECLARED TO BE FOR PUBLIC USE AS INDICATED. EASEMENTS FOR PUBLIC UTILITIES, COUNTY ROAD NO. 214 AND DRAINAGE FACILITIES ARE HEREBY DEDICATED FOR PUBLIC USES.

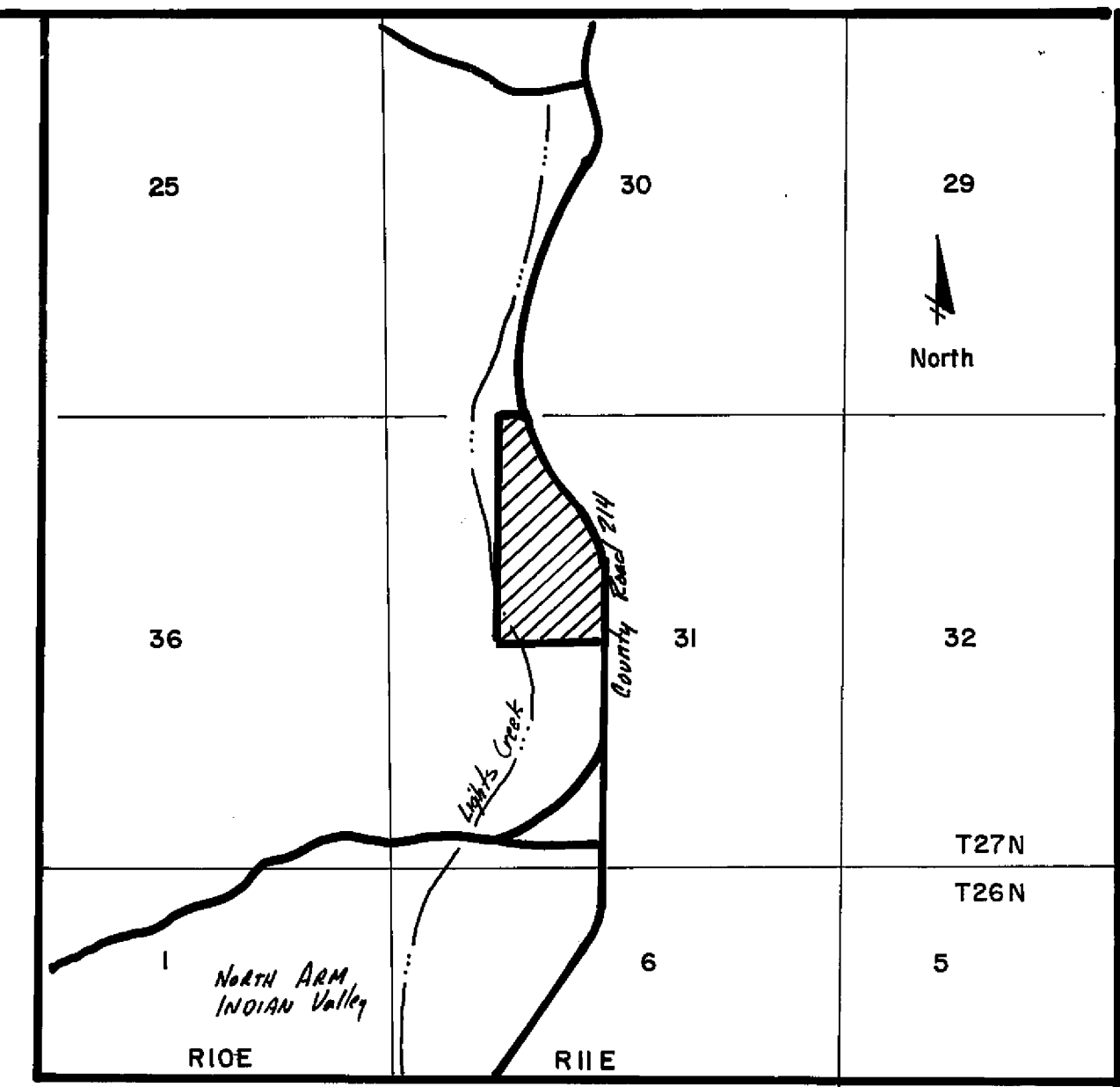
John P. Glass
By Len Franz his Attorney in Fact

NOTARY

STATE OF CALIFORNIA)
COUNTY OF PLUMAS) ss
ON THIS 5th DAY OF OCT., IN THE YEAR 1983, BEFORE ME, THE UNDERSIGNED, A NOTARY PUBLIC IN AND FOR SAID COUNTY AND STATE, PERSONALLY APPEARED LEN FRANZ, PERSONALLY KNOWN TO ME (OR PROVED TO ME ON THE BASIS OF SATISFACTORY EVIDENCE) TO BE THE PERSON WHOSE NAME IS SUBSCRIBED TO THE WITHIN INSTRUMENT, AS THE ATTORNEY-IN-FACT OF JOHN P. GLASS, AND ACKNOWLEDGED TO ME THAT HE SUBSCRIBED THE NAME OF JOHN P. GLASS THERETO AS PRINCIPAL AND HIS OWN NAME AS ATTORNEY-IN-FACT.



David O. Windle
NOTARY PUBLIC



LIGHTS CREEK MEADOWS

A Planned Development of six Lots
BEING A PORTION OF THE NORTH-WEST QUARTER OF SECTION 31 T27N R11E MDB&M PLUMAS Co. CALIFORNIA
DEVELOPER JOHN P. GLASS
ENGINEER CLIFFORD R. BROWN Engineering & Survey
Rt.1 Box 480 B, Quincy, California

JULY 1983