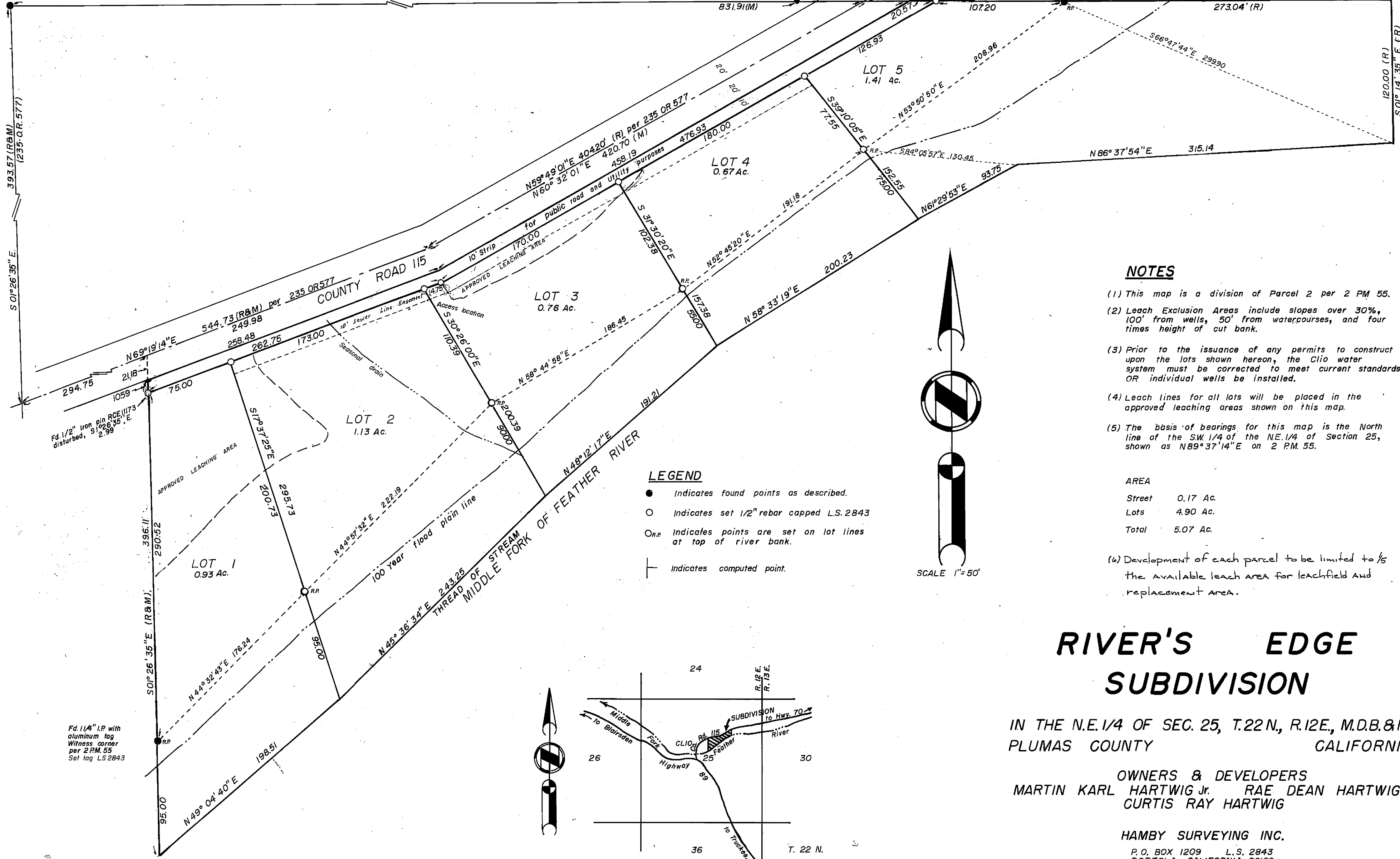


NW Corner of the SW 1/4 of NE 1/4 of Sec. 25. Fd. 1/2" Steel pin, R.C.E. 11173 per 2 P.M. 55

BASIS OF BEARINGS
S 89° 37' 14" W 1054.72 (R) 1054.75 (M)

Found 1/2" Iron pipe tagged R.C.E. 11173 Not on record

Fd. 2" I.P. stamped "NE corner of SW 1/4 of NE 1/4 is 273.04' E." per 2 P.M. 55 Set tag L.S. 2843



NOTES

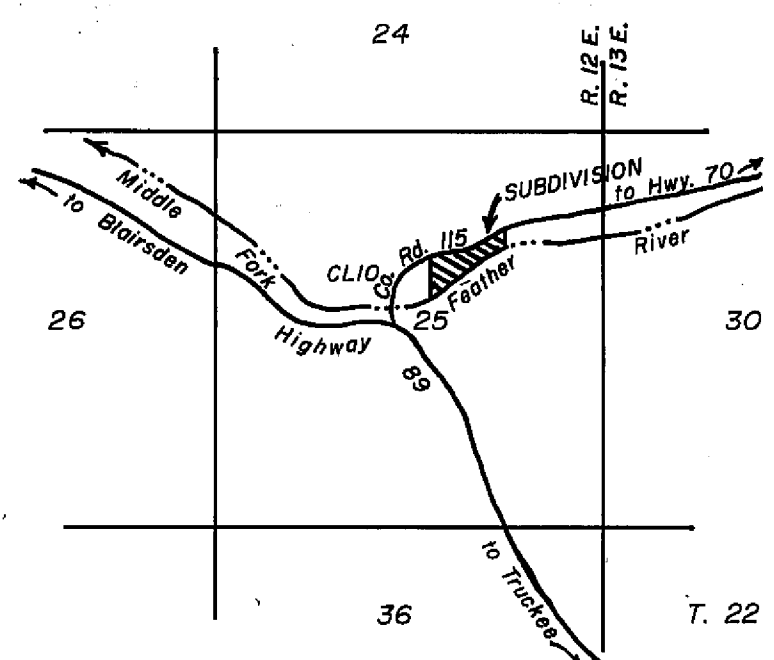
- (1) This map is a division of Parcel 2 per 2 P.M. 55.
- (2) Leach Exclusion Areas include slopes over 30%, 100' from wells, 50' from watercourses, and four times height of cut bank.
- (3) Prior to the issuance of any permits to construct upon the lots shown hereon, the Clio water system must be corrected to meet current standards OR individual wells be installed.
- (4) Leach lines for all lots will be placed in the approved leaching areas shown on this map.
- (5) The basis of bearings for this map is the North line of the SW 1/4 of the NE 1/4 of Section 25, shown as N 89° 37' 14" E on 2 P.M. 55.

| AREA | |
|--------|----------|
| Street | 0.17 Ac. |
| Lots | 4.90 Ac. |
| Total | 5.07 Ac. |

- (6) Development of each parcel to be limited to 1/5 the available leach area for leachfield and replacement area.

LEGEND

- Indicates found points as described.
- Indicates set 1/2" rebar capped L.S. 2843
- _{R.P.} Indicates points are set on lot lines at top of river bank.
- └ Indicates computed point.



LOCATION MAP
not to scale

**RIVER'S EDGE
SUBDIVISION**

IN THE N.E. 1/4 OF SEC. 25, T. 22 N., R. 12 E., M.D.B. & M. PLUMAS COUNTY CALIFORNIA

OWNERS & DEVELOPERS
MARTIN KARL HARTWIG Jr. RAE DEAN HARTWIG
CURTIS RAY HARTWIG

HAMBY SURVEYING INC.

P.O. BOX 1209 L.S. 2843
PORTOLA, CALIFORNIA 96122
(916) 832-5571

SCALE - 1" = 50'

MARCH 1983

SHEET 2 OF 2