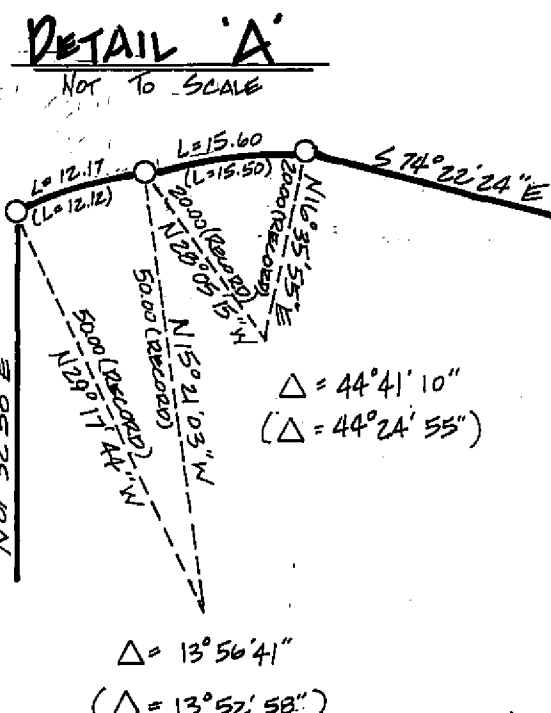
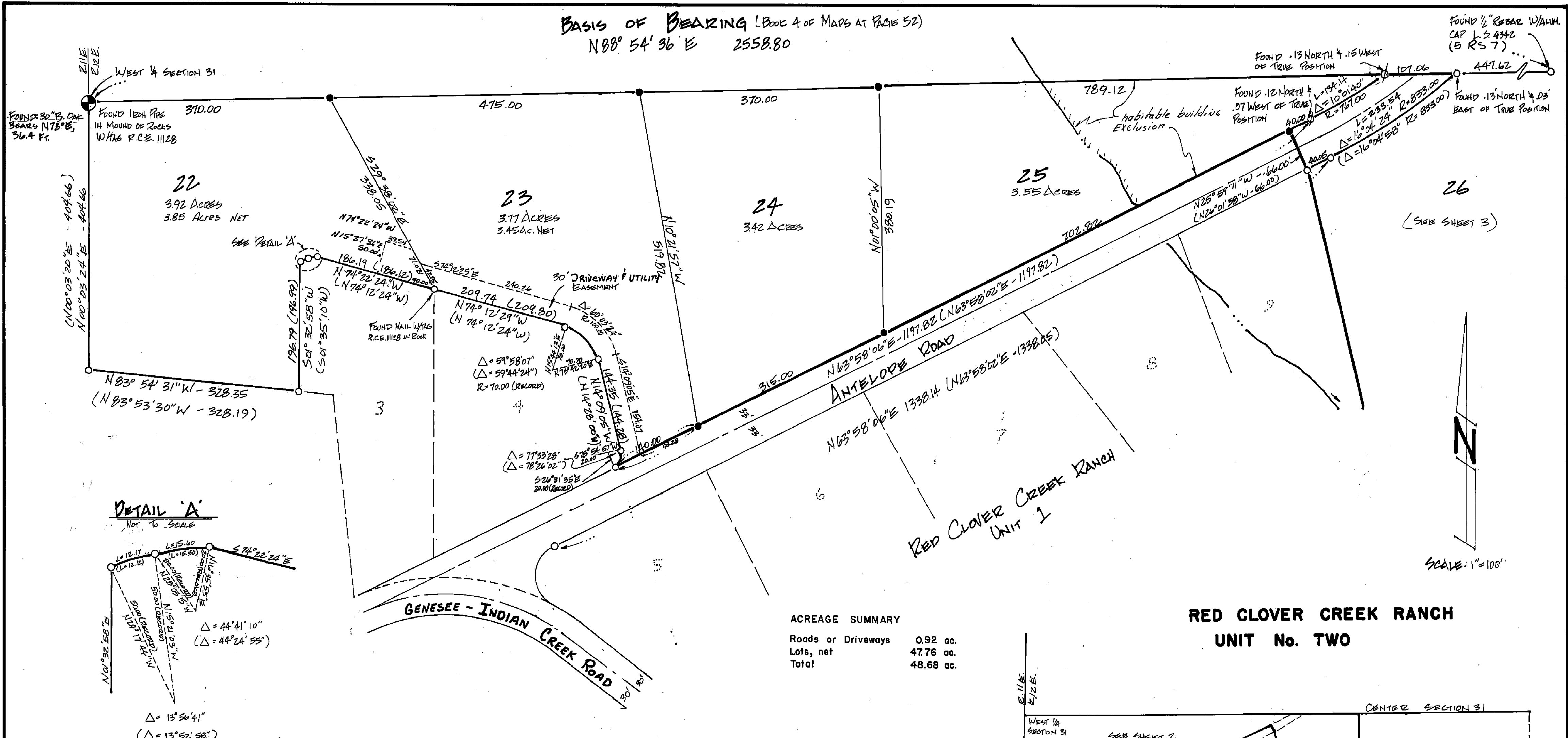


BASIS OF BEARING (Book 4 of MAPS AT PAGE 52)  
 N88° 54' 36" E 2558.80



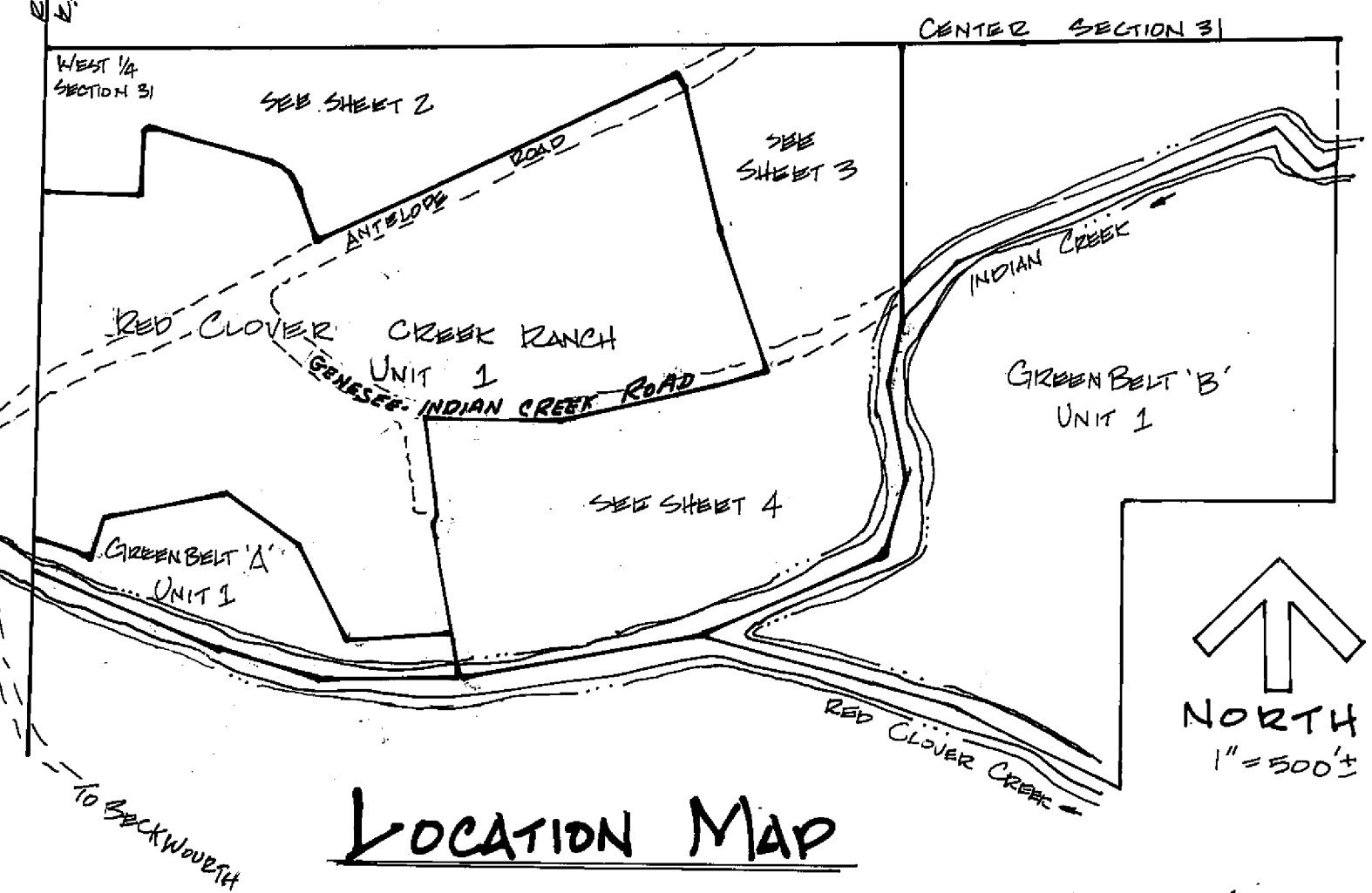
ACREAGE SUMMARY

Roads or Driveways	0.92 ac.
Lots, net	47.76 ac.
Total	48.68 ac.

RED CLOVER CREEK RANCH  
 UNIT No. TWO

- LEGEND**
- SET 1/2" x 18" REBAR W/ CAP R.C.E. 22836
  - FOUND 3/4" IRON PIPE W/ TAG R.C.E. 11128, EXCEPT AS NOTED (4 MAPS 52)
  - CENTERLINE
  - PROPERTY BOUNDARY
  - WATER COURSE
  - ⊕ FOUND 3/4" IRON PIPE W/ TAG R.C.E. 11128 (NO REBAR)
  - ( ) RECORD PER 4 MAPS 51, 52, 53 AND 4 PM 93
  - W.C. WITNESS CORNER

- GENERAL NOTES:**
- LEACH EXCLUSION AREAS INCLUDE SLOPES OVER 30%; 50' FROM PROPERTY LINES; 50' FROM SEASONAL WATERCOURSES; 100' UPHILL FROM THE IRRIGATION DITCH; 100' FROM THE HIGH WATER LINE OF INDIAN CREEK, AND 100' FROM WELLS.
  - "ANTELOPE ROAD" IS A MAJOR LOG HAUL ROAD.
  - Stream access easements (NOT INDICATED ON MAP) include areas within 150' from South boundary of Lots 30, 31, 32, and 33; and Lot 29. Also 50' from the east boundary of Lot 29.
  - Red Clover Road and the driveway serving Lot 22 are private easements not subject to improvement or maintenance by Flumas County. Such easements will not become effective unless and until reservations and grants in the respective deeds.



LOCATION MAP