

HAMILTON BRANCH SUBDIVISION  
ADDITION NO. 1  
(R/M 2-39 & 40)

HAMILTON BRANCH SUBDIVISION  
ADDITION NO. 7  
(R/M 4-85 & 86)

HAMILTON BRANCH SUBDIVISION  
ADDITION NO. 8

IN A PORTION OF SECTION 21, T.28N., R.8E., M.D.B. & M.,  
PLUMAS COUNTY, CALIFORNIA

SCALE: 1" = 100'

SHEET 2 OF 3

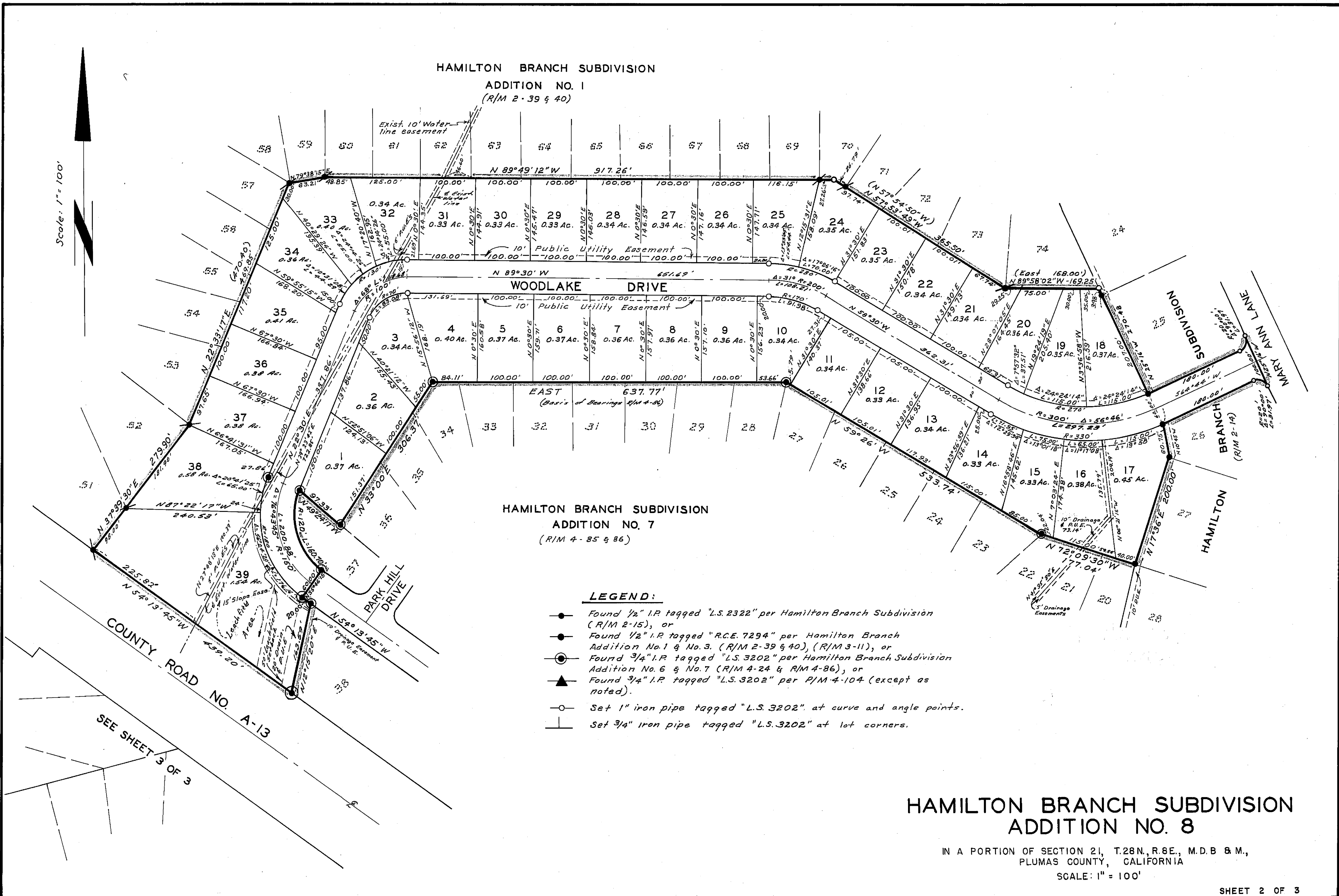
77-164

5 M 9

Scale: 1" = 100'

LEGEND:

- Found 1/2" I.P. tagged "L.S. 2322" per Hamilton Branch Subdivision (R/M 2-15), or
- Found 1/2" I.P. tagged "R.C.E. 7294" per Hamilton Branch Addition No. 1 & No. 3. (R/M 2-39 & 40), (R/M 3-11), or
- ⊙ Found 3/4" I.P. tagged "L.S. 3202" per Hamilton Branch Subdivision Addition No. 6 & No. 7 (R/M 4-24 & R/M 4-86), or
- ▲ Found 3/4" I.P. tagged "L.S. 3202" per P/M 4-104 (except as noted).
- Set 1" iron pipe tagged "L.S. 3202" at curve and angle points.
- └ Set 3/4" iron pipe tagged "L.S. 3202" at lot corners.



SEE SHEET 3 OF 3