

CURVE DATA (EXTERIOR BOUNDARY)

RECORD (2 PM 52)	MEASURED
"A" Δ = 14°00'09" R = 780.25 L = 190.69 Lch = 190.21	Δ = 14°00'30" R = 780.25 L = 190.76 Lch = 190.29
"B" Δ = 14°00'09" R = 960.25 L = 234.68 Lch = 234.09	Δ = 14°04'18" R = 960.25 L = 235.83 Lch = 235.24
"C" Δ = 21°05'23" (2 PM 52) R = 1540.38 L = 567.22 Lch = 563.80	Δ = 21°00'46" R = 1540.38 L = 564.92 Lch = 561.76
"D" Δ = 21°10'53" R = 1720.38 L = 635.99 Lch = 632.38	Δ = 21°09'08" R = 1720.38 L = 635.12 Lch = 631.52

SUBDIVISION ACREAGE

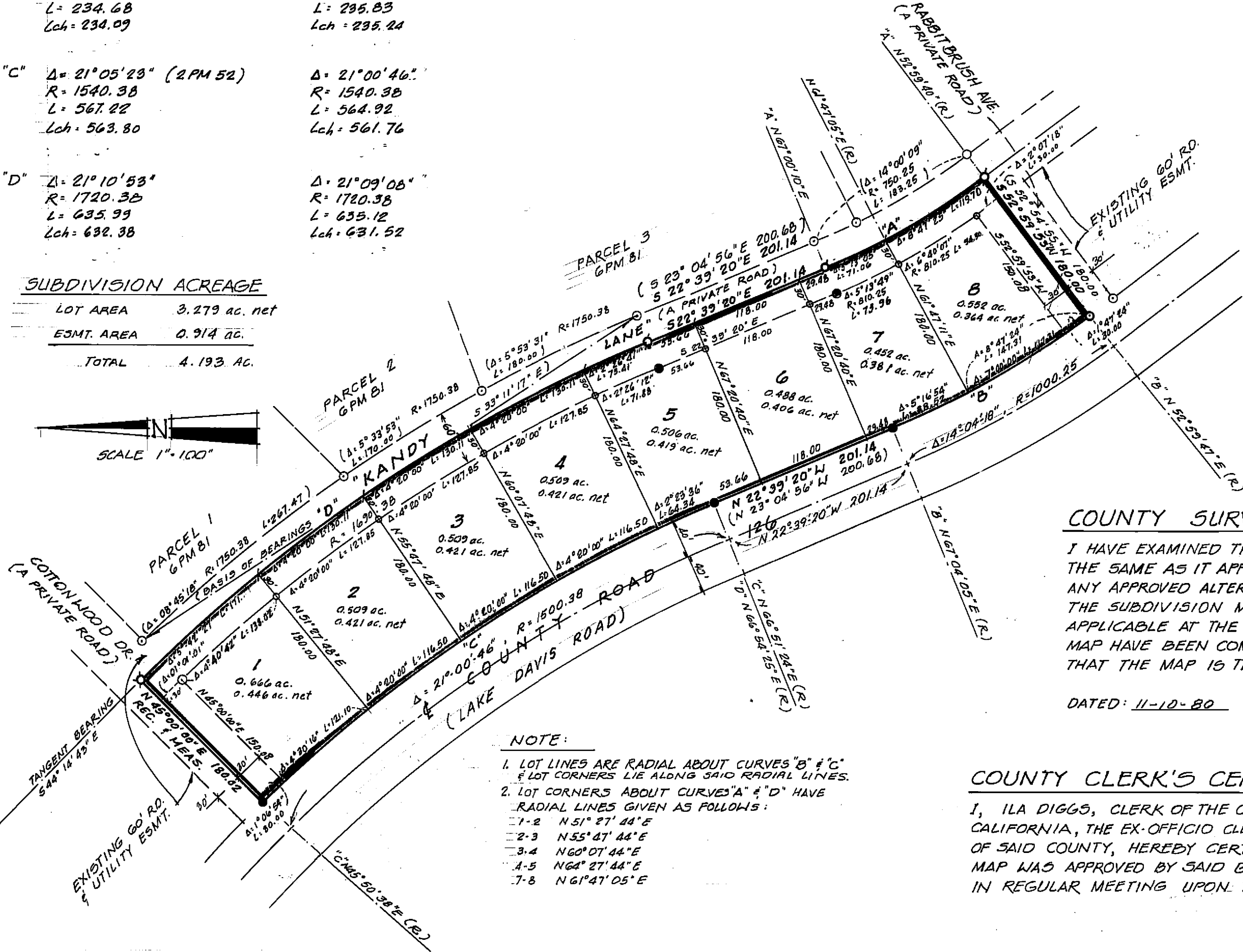
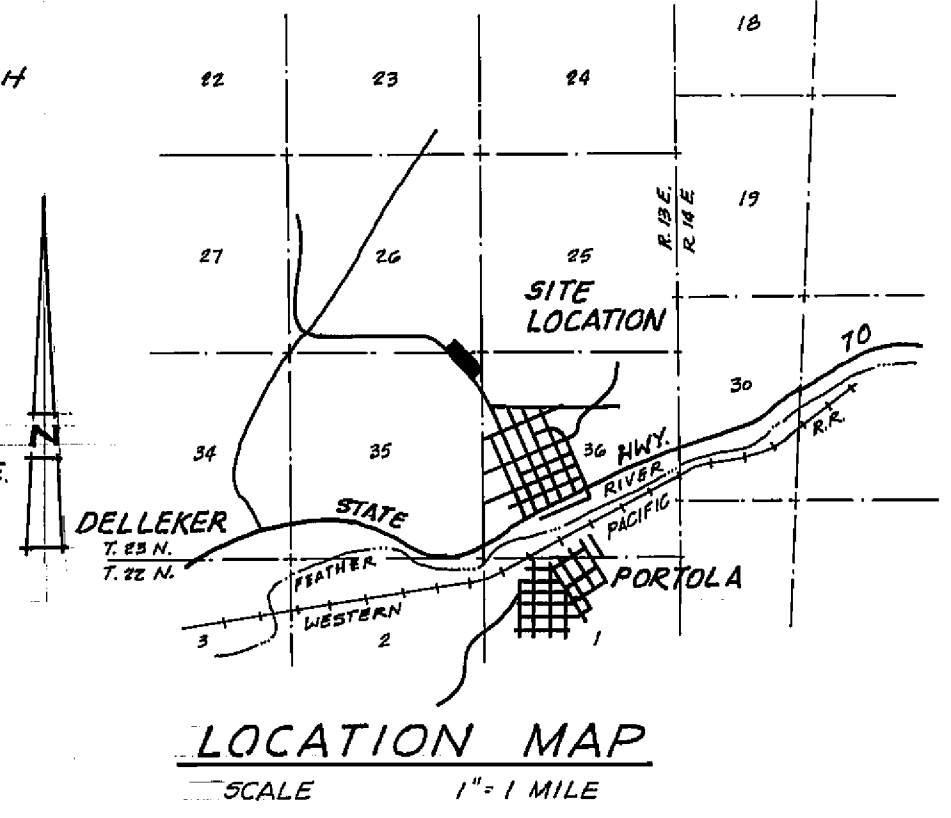
LOT AREA	3.279 ac. net
ESMT. AREA	0.914 ac.
TOTAL	4.193 ac.

LEGEND

- SET 1/2" REBAR W/ PLASTIC CAP, STAMPED RCE 15265
- END 1/2" REBAR W/ ALUM. CAP, L5 2843 (GPM 81)
- ⊗ END 1/2" REBAR W/ PLASTIC CAP, L5 3297
- END 3/4" I.P. W/ TAG, RCE 7234 (2 PM 52)
- ⊕ COMPUTED CORNER
- ( ) RECORD DATA GPM 81 & 2 PM 52
- ⊕ SET 1/2" REBAR W/ PLASTIC CAP, STAMPED RCE 15265 AS WITNESS CORNER

NOTES

- THE BASIS OF BEARING IS THE LONG CHORD BEARING BETWEEN THE NORTHWEST CORNER OF PARCEL 1 AND THE NORTHERNMOST POINT OF CURVATURE OF PARCEL 3 AS SHOWN IN BOOK 6 OF PARCEL MAPS AT PAGE 81, PLUMAS COUNTY RECORDS, HAVING A TANGENT BEARING OF N 23° 04' 56" WEST, THROUGH A CENTRAL ANGLE OF 20° 12' 42"; SAID BEARING THENCE COMPUTED THEREFROM AS N 33° 11' 17" W. SAID DATA BEING THE EASEMENT LINE AS MONUMENTED.
- ACCESS SHALL BE PROVIDED VIA 4 COMMON DRIVEWAYS ONTO CO. RD. 126 AS PER PLANNING COMMISSION CONDITION OF APPROVAL.
- ROADS SHOWN HEREON ARE PRIVATE ROAD EASEMENTS THAT WERE CREATED AND ESTABLISHED VIA 2 PM 52 & DECLARATION 180 O.R. 191
- ROADS SHOWN HEREON AS PRIVATE ROADS ARE NOT SUBJECT TO COUNTY IMPROVEMENT OR MAINTENANCE. IT WILL BE REQUIRED THAT SUCH ROADS BE IMPROVED TO COUNTY STANDARDS AT NO COST TO THE COUNTY BEFORE SUCH ROADS WILL BE ACCEPTED INTO THE COUNTY ROAD SYSTEM.



- NOTE:
- LOT LINES ARE RADIAL ABOUT CURVES "B" & "C" & LOT CORNERS LIE ALONG SAID RADIAL LINES.
  - LOT CORNERS ABOUT CURVES "A" & "D" HAVE RADIAL LINES GIVEN AS FOLLOWS:
    - 1-2 N 51° 27' 44" E
    - 2-3 N 55° 47' 44" E
    - 3-4 N 60° 07' 44" E
    - 4-5 N 64° 27' 44" E
    - 7-8 N 67° 47' 05" E

OWNER'S CERTIFICATE

WE HEREBY CERTIFY THAT WE ARE THE OWNERS OF THE LAND SHOWN ON THIS SUBDIVISION MAP AND CONSENT TO THE PREPARATION AND RECORDING OF THIS MAP, AND THAT WE ARE THE ONLY PERSONS WHOSE CONSENT IS REQUIRED TO PASS CLEAR TITLE TO SAID LANDS.

THE EASEMENTS SHOWN HEREON ARE HEREBY ESTABLISHED FOR THE USES INTENDED AND AS NOTED.

*John L. Gilmore*  
JOHN L. GILMORE  
*Frieda A. Gilmore*  
FRIEDA A. GILMORE

*Albert L. Steele*  
ALBERT L. STEELE  
*Alice D. Steele*  
ALICE D. STEELE

COUNTY SURVEYOR'S CERTIFICATE

I HAVE EXAMINED THIS MAP AND FIND IT SUBSTANTIALLY THE SAME AS IT APPEARED ON THE TENTATIVE MAP AND ANY APPROVED ALTERATIONS THEREOF. ALL PROVISIONS OF THE SUBDIVISION MAP ACT AND ANY LOCAL ORDINANCES APPLICABLE AT THE TIME OF APPROVAL OF THE TENTATIVE MAP HAVE BEEN COMPLIED WITH; AND I AM SATISFIED THAT THE MAP IS TECHNICALLY CORRECT.

DATED: 11-10-80  
SIGNED: *Lawrence J. Brock*  
LAWRENCE J. BROCK - RCE 13528  
COUNTY SURVEYOR

COUNTY CLERK'S CERTIFICATE

I, ILA DIGGS, CLERK OF THE COUNTY OF PLUMAS, STATE OF CALIFORNIA, THE EX-OFFICIO CLERK OF THE BOARD OF SUPERVISORS OF SAID COUNTY, HEREBY CERTIFY THAT THE HEREIN EMBODIED MAP WAS APPROVED BY SAID BOARD OF SUPERVISORS CONVENED IN REGULAR MEETING UPON THE 12<sup>th</sup> DAY OF November, 1980.

*Ila Diggs*  
ILA DIGGS  
COUNTY CLERK

COUNTY TAX COLLECTOR'S CERTIFICATE

I, LOIS ALEXANDER, TAX COLLECTOR OF THE COUNTY OF PLUMAS, STATE OF CALIFORNIA, DO HEREBY CERTIFY THAT THERE ARE NO TAX LIENS AGAINST THE LOTS AS SHOWN HEREON, FOR UNPAID COUNTY, MUNICIPAL, OR LOCAL TAXES OR SPECIAL ASSESSMENTS COLLECTED AS TAXES, EXCEPT TAXES OR ASSESSMENTS NOT YET PAYABLE. TAXES OR ASSESSMENTS WHICH ARE A LIEN BUT NOT YET PAYABLE, ARE ESTIMATED TO BE IN THE AMOUNT OF \$ NONE.

DATED: 11-14-80  
SIGNED: *Lois Alexander*  
LOIS ALEXANDER  
PLUMAS COUNTY TAX COLLECTOR

COUNTY RECORDER'S CERTIFICATE

FILED THIS 14<sup>th</sup> DAY OF November, 1980, AT 2:40 P.M. IN BOOK 5 OF MAPS, AT PAGE 3, AT THE REQUEST OF THE COUNTY ENGINEER.

ILA DIGGS  
COUNTY RECORDER

FEE: \$ 5.00  
FILE NO.: 4059

BY: *Frances Nicol*  
FRANCES NICOL  
DEPUTY

ENGINEER'S CERTIFICATE

THIS MAP AND THE SURVEY PERFORMED THEREFOR IN MAY, 1980, WERE MADE BY ME OR UNDER MY DIRECTION. THE SURVEY IS TRUE AND COMPLETE AS SHOWN. ALL THE MONUMENTS SHOWN HEREON ARE OF THE CHARACTER AND OCCUPY THE POSITIONS INDICATED AND ARE SUFFICIENT TO ENABLE THE SURVEY TO BE RETRACED.

*Richard A. Lundy*  
RICHARD A. LUNDY - RCE 15265

GRANITE PARK SUBDIVISION

FOR J. GILMORE ET UX AND A. STEELE ET UX  
BEING ALL OF PARCEL 1, BOOK 2 OF PARCEL MAPS, PAGE 52, PLUMAS CO. RECORDS, LYING WITHIN SECTIONS 26 & 35, T. 23 N., R. 13 E., M.D.B. & M. PLUMAS COUNTY, CALIFORNIA

LUNDY ENGINEERING, INC.  
PO BOX 308  
GRÁEAGLE, CALIFORNIA  
SEPTEMBER, 1980