

ANSERINE MEADOWS

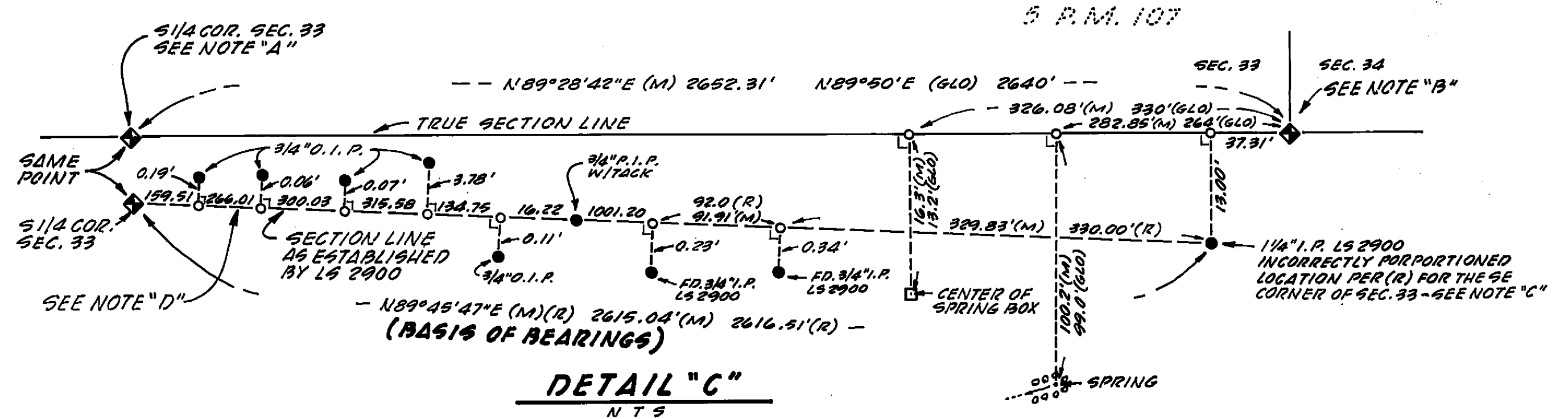
A PORTION OF THE SE 1/4 OF SECTION 33,
T 22 N, R 9 E, M. D. M. IN THE UNINCORPORATED
AREA OF PLUMAS COUNTY, CAL.

NOTE "A" G.L.O.: POST FROM WHICH BEARS
22" FIR N 41 1/2 W 2 LINKS
18" FIR S 8 3/4 W 25 LINKS
FOUND: 3/4" P.I.P. IN M.O.R. WITH
ROTTED POST. A HIGH CUT W. FIR
STUMP ± 34" DIA. WITH ORIGINAL
SCRIBING EXPOSED BEARS N 40 W
3 LINKS AND A ± 28" W. FIR SNAG
WITH SCAR AND CLOSED FACE
BEARS S 9 W ± 22 LINKS - 1 SET
1 1/4" C.I.P. L53625

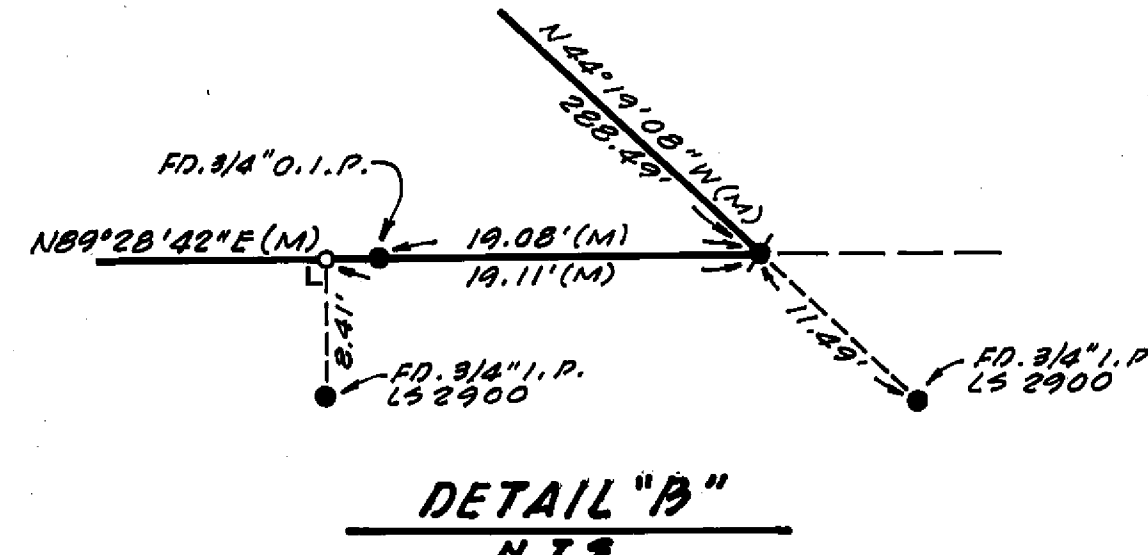
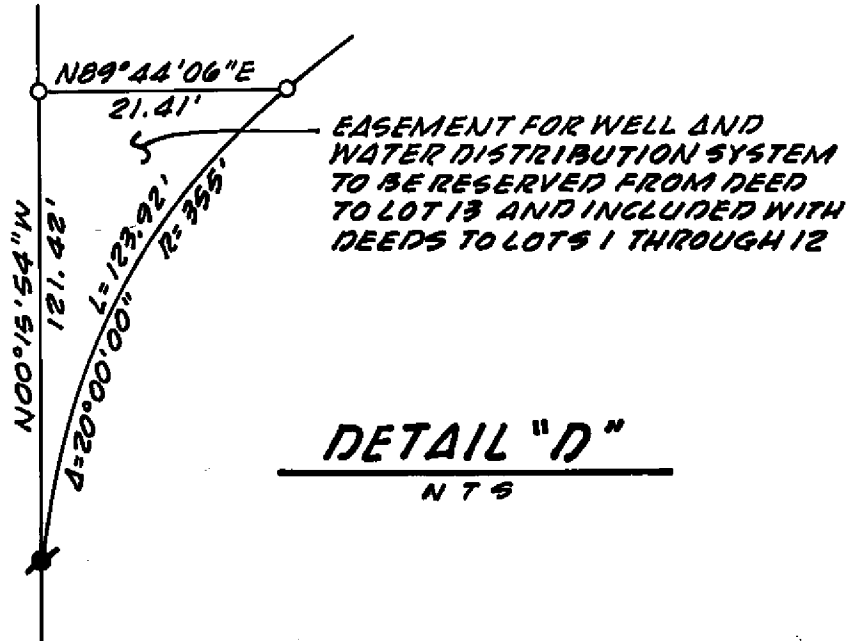
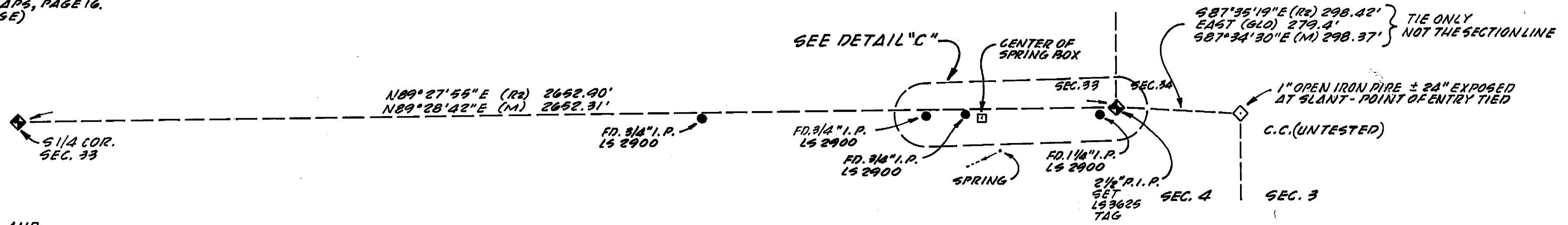
NOTE "B" G.L.O.: POST FROM WHICH BEARS
10" FIR N 25 1/4 E 37 LINKS
8" FIR S 7 E 21 LINKS
13" FIR N 78 3/4 W 42 LINKS
FOUND: 2 1/2" P.I.P. WITH NAIL AND
"T" FITTING IN M.O.R.
AT ± N 87° W ± 44 LINKS A W. FIR
STUMP HOLE.
S 7° E ± 22 LINKS POSSIBLE STUMP HOLE.
U.S.F.S. CORNER RECORD CARD FROM 1969
AND OLD "K" TAG FOUND ON REMAINS OF
DOWNED FIR INDICATE THAT THIS CORNER
WAS FOUND WITH ITS BEARING TREES.
SET L5 3625 TAG ON PIPE.

NOTE "C" THIS CORNER WAS ESTABLISHED BY
PROPORTIONAL MEASUREMENT ALONG
A LINE BETWEEN THE 5/16" CORNER
OF SECTION 33 AND THE UNTESTED
CLOSING CORNER BETWEEN SECTIONS
4 AND 3. THIS PROCEDURE IS INCORRECT.

NOTE "D" THE 3/4" OPEN IRON PIPE MONUMENTS
ALONG THE SOUTH LINE OF SECTION 33
WERE PROBABLY SET FOR PANCAKE BAY
SUBDIVISION, BOOK 3 OF MAPS, PAGE 16.
(NOW REVERTED TO ACREAGE)



SOUTH SECTION LINE DETAIL



- LEGEND**
- - SET 1/2" REBAR L53625
 - - FOUND MONUMENT AS INDICATED
 - - POINT DETERMINED ONLY
 - (M) - MEASURED
 - (R) - BOOK 2 R.O.S. 72
 - (D) - 258 O.R. 267
 - (R2) - UNRECORDED PLAT BY GILLET-HARRIS & ASSOCIATES, DATED OCT. 1962 JOB #2505, A COPY OF WHICH IS ON FILE WITH THE PLUMAS COUNTY SURVEYOR.
 - (R3) - UNRECORDED PLAT BY K.E. SOULE DATED SEPT. 1961 # B-320 A, A COPY OF WHICH IS ON FILE WITH THE PLUMAS COUNTY SURVEYOR.

GDA CHRISTOPHERSON
ENGINEERING
SURVEYING
PLANNING
463 ORO DAM BLVD., SU. M
OROVILLE, CALIF. 95965
(916) 538-2068