

# GRAEAGLE MEADOWS UNIT NO. 5

A PLANNED UNIT DEVELOPMENT

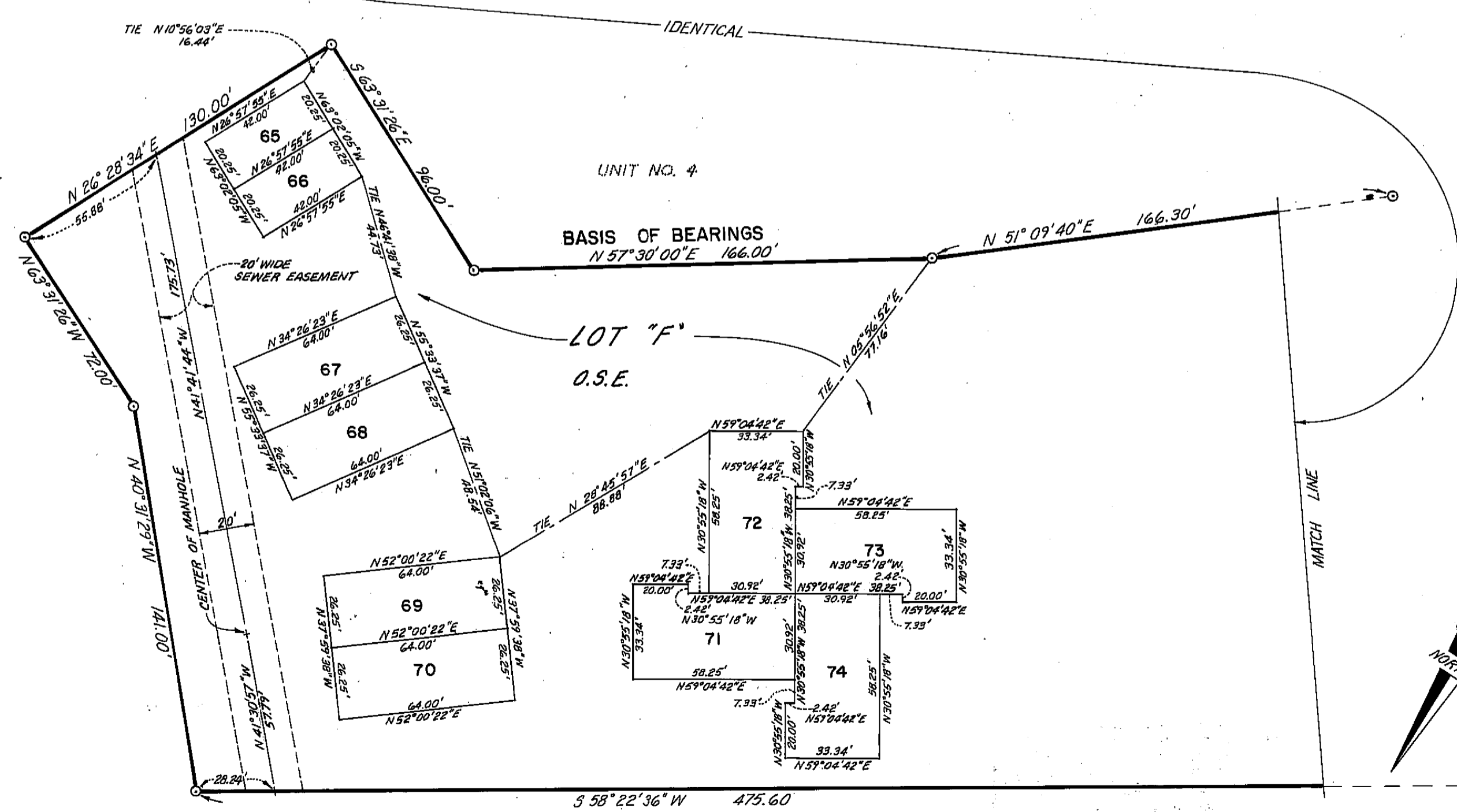
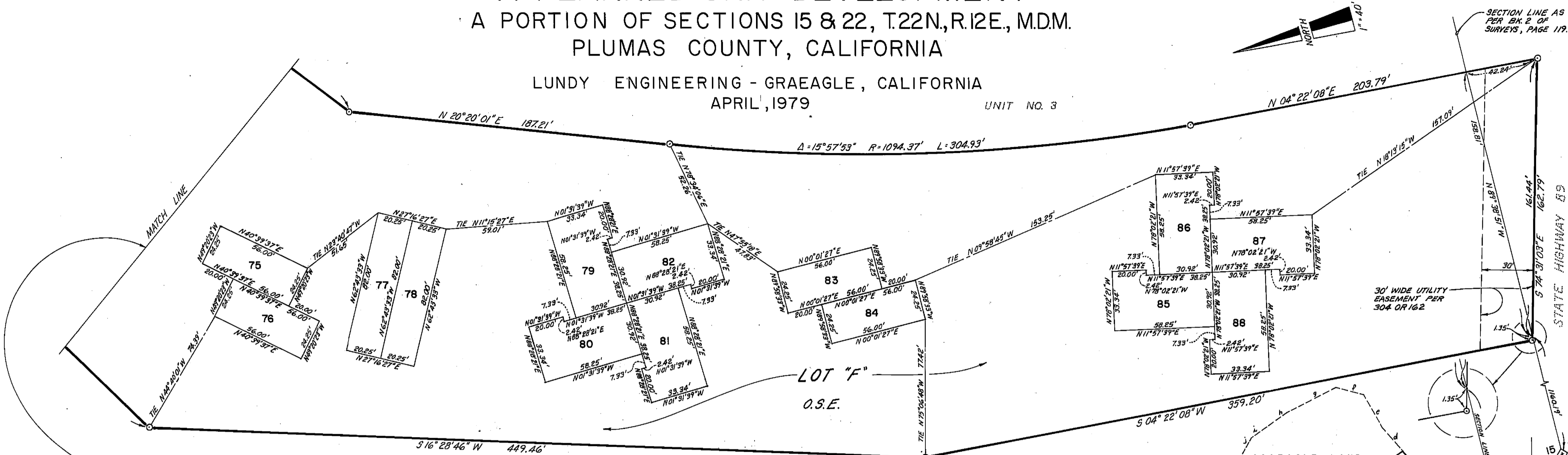
A PORTION OF SECTIONS 15 & 22, T.22N., R.12E., M.D.M.

PLUMAS COUNTY, CALIFORNIA

LUNDY ENGINEERING - GRAEAGLE, CALIFORNIA

APRIL, 1979

UNIT NO. 3

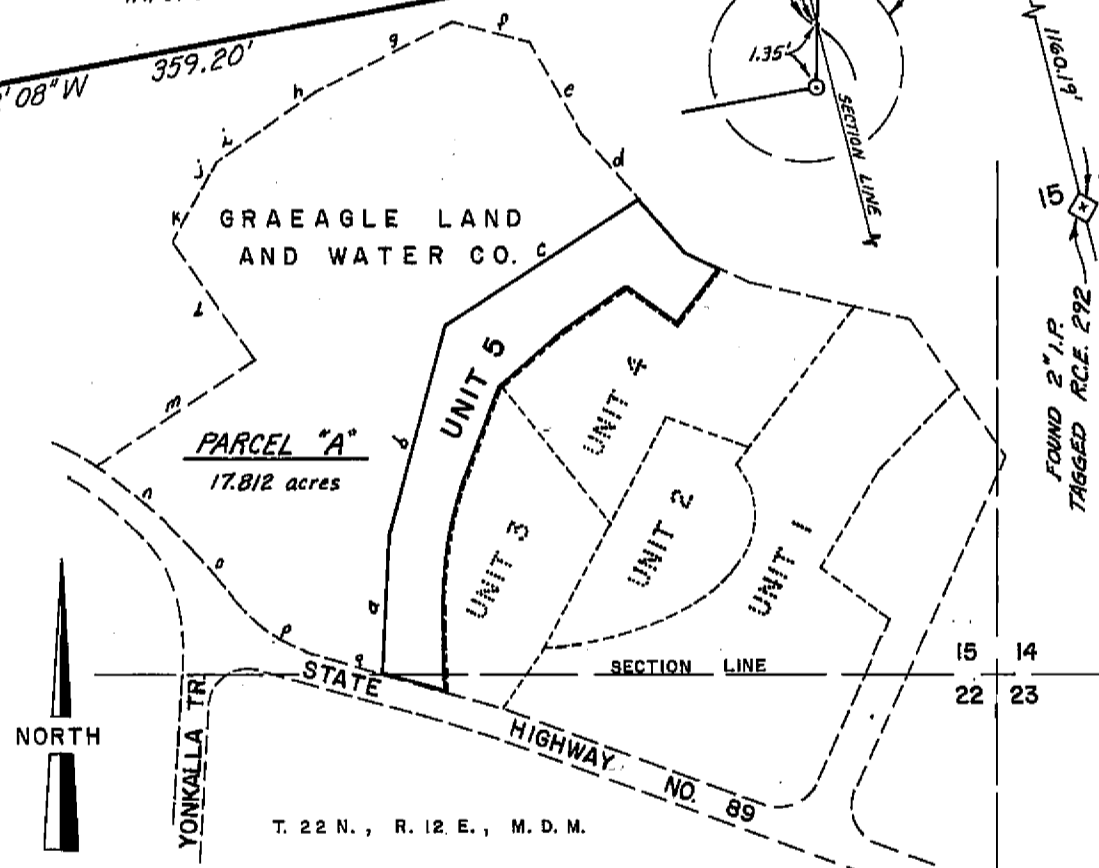


**PARCEL "A" BOUNDARY CALLS:**

- a N 04° 22' 08" E 359.20'
- b N 16° 28' 46" E 449.46'
- c N 58° 22' 36" E 475.60'
- d N 40° 31' 29" W 232.36'
- e N 26° 40' 39" W 194.10'
- f N 75° 04' 39" W 178.89'
- g S 61° 57' 19" W 363.71'
- h S 51° 40' 00" W 164.45'
- i S 55° 42' 47" W 53.25'
- j S 38° 04' 22" W 76.22'
- k S 31° 32' 53" W 132.99'
- l S 34° 41' 08" E 317.60'
- m S 56° 40' 12" W 420.09'
- n A=20° 57' 24" R=860' T=159.06' L=314.56'
- o S 37° 09' 33" E 94.32'
- p A=37° 21' 30" R=400' T=135.23' L=260.81'
- q S 74° 31' 03" E 135.83'

**AREA TABULATION**

AREA TABULATION	SQUARE FEET
LOTS 65 & 66	1701
LOTS 67 - 70	6720
LOTS 75, 76, 83 & 84	5432
LOTS 77 & 78	3321
LOTS 71-74, 79-81 & 85-88	22193.88
LOT "F"	187030.14
<b>TOTAL BOUNDARY</b>	<b>226,398.02 (5.197 ACRES)</b>



**LOCATION PLAN**  
NO SCALE

**LEGEND:**

- - FOUND 1/2" REBAR W/PLASTIC CAP STAMPED RCE 15265
- - SET 1/2" REBAR W/PLASTIC CAP STAMPED RCE 15265
- O.S.E. - OPEN SPACE EASEMENT

**BASIS OF BEARINGS:**

THE BASIS OF BEARINGS IS THE MOST NORTHWESTERLY LINE OF GRAEAGLE MEADOWS UNIT NO. 4, AS SHOWN IN BOOK 4 OF MAPS AT PAGE 106, PLUMAS COUNTY RECORDS, GIVEN AS NORTH 57° 30' 00" EAST.